

## ALS2CR4 Polyclonal Antibody

<b>Catalog No :</b>	YT0204
<b>Reactivity :</b>	Human;Mouse
<b>Applications :</b>	WB;ELISA
<b>Target :</b>	ALS2CR4
<b>Gene Name :</b>	TMEM237
<b>Protein Name :</b>	Transmembrane protein 237
<b>Human Gene Id :</b>	65062
<b>Human Swiss Prot No :</b>	Q96Q45
<b>Mouse Gene Id :</b>	381259
<b>Mouse Swiss Prot No :</b>	Q3V0J1
<b>Immunogen :</b>	The antiserum was produced against synthesized peptide derived from human ALS2CR4. AA range:181-230
<b>Specificity :</b>	ALS2CR4 Polyclonal Antibody detects endogenous levels of ALS2CR4 protein.
<b>Formulation :</b>	Liquid in PBS containing 50% glycerol, 0.5% BSA and 0.02% sodium azide.
<b>Source :</b>	Polyclonal, Rabbit,IgG
<b>Dilution :</b>	WB 1:500 - 1:2000. ELISA: 1:20000. Not yet tested in other applications.
<b>Purification :</b>	The antibody was affinity-purified from rabbit antiserum by affinity-chromatography using epitope-specific immunogen.
<b>Concentration :</b>	1 mg/ml
<b>Storage Stability :</b>	-15°C to -25°C/1 year(Do not lower than -25°C)

**Observed Band :** 48kD

**Background :** The protein encoded by this gene is a tetraspanin protein that is thought to be involved in WNT signaling. Defects in this gene are a cause of Joubert syndrome-14. Two transcript variants encoding different isoforms have been found for this gene. [provided by RefSeq, Jan 2012],

**Subcellular Location :** Membrane ; Multi-pass membrane protein . Cell projection, cilium . Localizes at the proximal region of primary cilia were observed, consistent with localization to the transition zone. Anchored to the transition zone by RPGRIP1L.

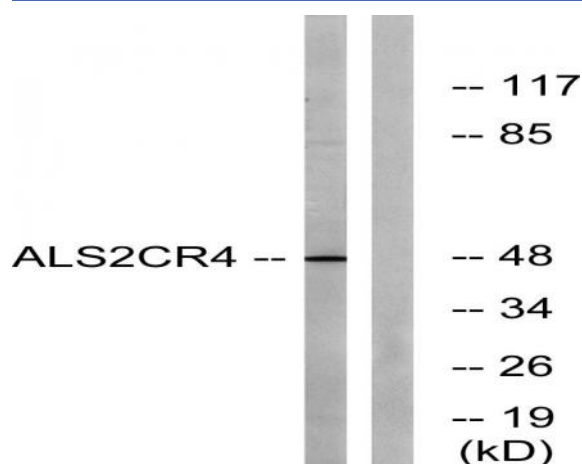
**Expression :** Brain,Fetal skin,Ovary,

**Sort :** 1927

**Host :** Rabbit

**Modifications :** Unmodified

## Products Images



Western blot analysis of lysates from Jurkat cells, using ALS2CR4 Antibody. The lane on the right is blocked with the synthesized peptide.