

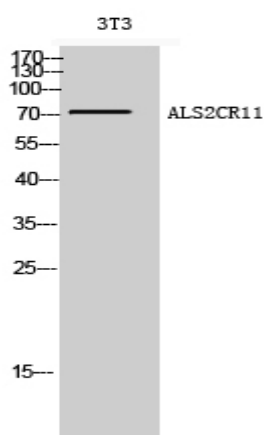
## ALS2CR11 Polyclonal Antibody

<b>Catalog No :</b>	YT0202
<b>Reactivity :</b>	Human;Rat;Mouse;
<b>Applications :</b>	WB;ELISA
<b>Target :</b>	ALS2CR11
<b>Gene Name :</b>	ALS2CR11
<b>Protein Name :</b>	Amyotrophic lateral sclerosis 2 chromosomal region candidate gene 11 protein
<b>Human Gene Id :</b>	151254
<b>Human Swiss Prot No :</b>	Q53TS8
<b>Immunogen :</b>	The antiserum was produced against synthesized peptide derived from human ALS2CR11. AA range:491-540
<b>Specificity :</b>	ALS2CR11 Polyclonal Antibody detects endogenous levels of ALS2CR11 protein.
<b>Formulation :</b>	Liquid in PBS containing 50% glycerol, 0.5% BSA and 0.02% sodium azide.
<b>Source :</b>	Polyclonal, Rabbit,IgG
<b>Dilution :</b>	WB 1:500 - 1:2000. ELISA: 1:40000. Not yet tested in other applications.
<b>Purification :</b>	The antibody was affinity-purified from rabbit antiserum by affinity-chromatography using epitope-specific immunogen.
<b>Concentration :</b>	1 mg/ml
<b>Storage Stability :</b>	-15°C to -25°C/1 year(Do not lower than -25°C)
<b>Observed Band :</b>	72kD
<b>Background :</b>	An autosomal recessive form of juvenile amyotrophic lateral sclerosis was

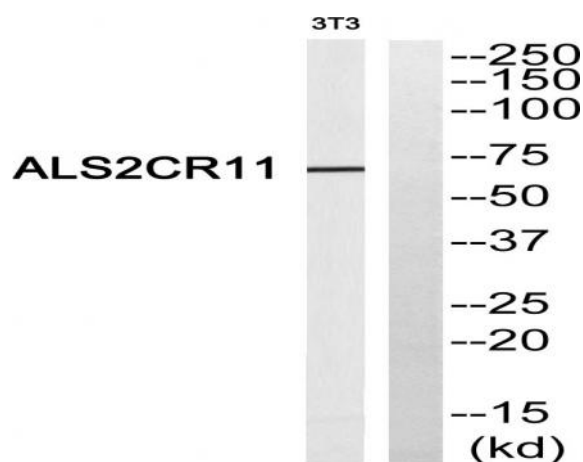
originally mapped to a region of chromosome 2 that includes this gene. The encoded protein contains a calcium-dependent membrane targeting C2 domain. This domain is often found in proteins that are involved in membrane trafficking and signal transduction. [provided by RefSeq, Jun 2016],

<b>Expression :</b>	Testis,
<b>Sort :</b>	1924
<b>No4 :</b>	1
<b>Host :</b>	Rabbit
<b>Modifications :</b>	Unmodified

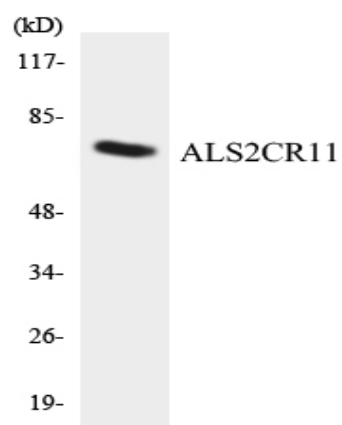
## Products Images



Western Blot analysis of 3T3 cells using ALS2CR11 Polyclonal Antibody



Western blot analysis of ALS2CR11 Antibody. The lane on the right is blocked with the ALS2CR11 peptide.



Western blot analysis of the lysates from COLO205 cells using ALS2CR11 antibody.