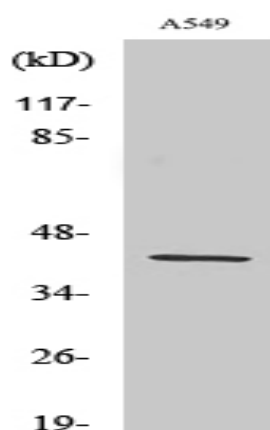


AARSD1 Polyclonal Antibody

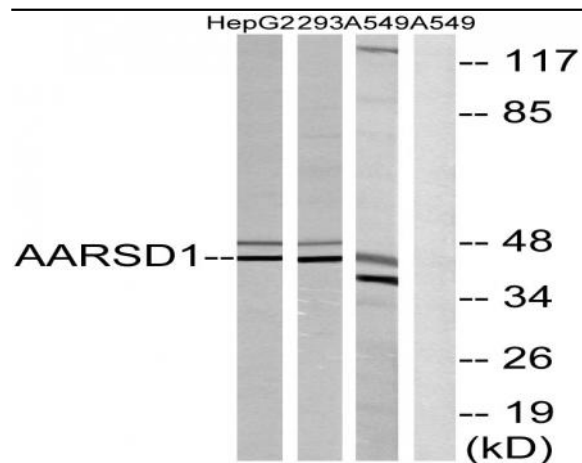
Catalog No :	YT0039
Reactivity :	Human;Mouse;Rat
Applications :	WB;ELISA
Target :	AARSD1
Gene Name :	AARSD1
Protein Name :	Alanyl-tRNA editing protein Aarsd1
Human Gene Id :	80755
Human Swiss Prot No :	Q9BTE6
Mouse Gene Id :	69684
Mouse Swiss Prot No :	Q3THG9
Rat Gene Id :	619440
Rat Swiss Prot No :	Q5XI97
Immunogen :	The antiserum was produced against synthesized peptide derived from human AARSD1. AA range:141-190
Specificity :	AARSD1 Polyclonal Antibody detects endogenous levels of AARSD1 protein.
Formulation :	Liquid in PBS containing 50% glycerol, 0.5% BSA and 0.02% sodium azide.
Source :	Polyclonal, Rabbit,IgG
Dilution :	WB 1:500 - 1:2000. ELISA: 1:40000. Not yet tested in other applications.
Purification :	The antibody was affinity-purified from rabbit antiserum by affinity-chromatography using epitope-specific immunogen.

Concentration :	1 mg/ml
Storage Stability :	-15°C to -25°C/1 year(Do not lower than -25°C)
Observed Band :	45kD
Background :	caution:The sequence shown here is derived from an Ensembl automatic analysis pipeline and should be considered as preliminary data.,similarity:Belongs to the class-II aminoacyl-tRNA synthetase family. AARSD1 subfamily.,
Function :	caution:The sequence shown here is derived from an Ensembl automatic analysis pipeline and should be considered as preliminary data.,similarity:Belongs to the class-II aminoacyl-tRNA synthetase family. AARSD1 subfamily.,
Subcellular Location :	Cytoplasm .
Expression :	Hippocampus,Lung,Neuroblastoma,
Sort :	1562
No4 :	1
Host :	Rabbit
Modifications :	Unmodified

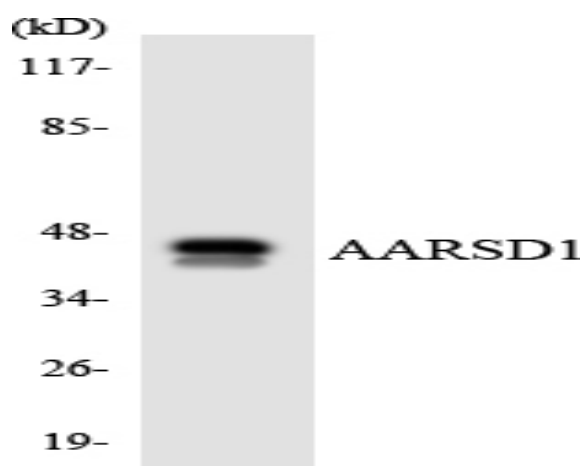
Products Images



Western Blot analysis of various cells using AARSD1 Polyclonal Antibody



Western blot analysis of lysates from A549, 293, and HepG2 cells, using AARSD1 Antibody. The lane on the right is blocked with the synthesized peptide.



Western blot analysis of the lysates from HUVEC cells using AARSD1 antibody.