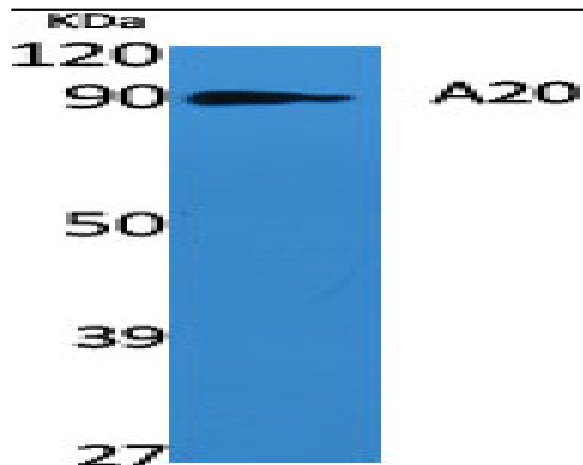


A20 Polyclonal Antibody

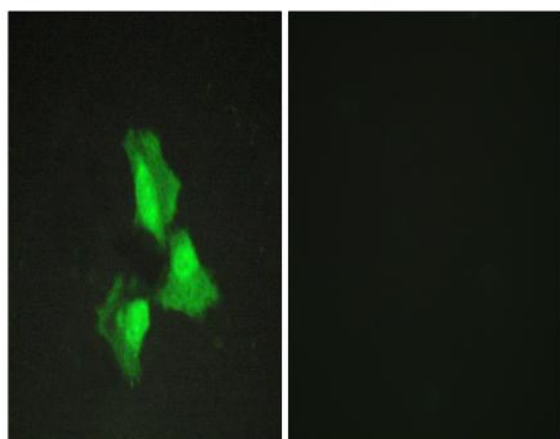
Catalog No :	YT0037
Reactivity :	Human;Mouse
Applications :	WB;IF;ELISA
Target :	A20
Fields :	>>NF-kappa B signaling pathway;>>Necroptosis;>>NOD-like receptor signaling pathway;>>IL-17 signaling pathway;>>TNF signaling pathway;>>Measles;>>Epstein-Barr virus infection
Gene Name :	TNFAIP3
Protein Name :	Tumor necrosis factor alpha-induced protein 3
Human Gene Id :	7128
Human Swiss Prot No :	P21580
Mouse Gene Id :	21929
Mouse Swiss Prot No :	Q60769
Immunogen :	The antiserum was produced against synthesized peptide derived from human TNAP3. AA range:321-370
Specificity :	A20 Polyclonal Antibody detects endogenous levels of A20 protein.
Formulation :	Liquid in PBS containing 50% glycerol, 0.5% BSA and 0.02% sodium azide.
Source :	Polyclonal, Rabbit,IgG
Dilution :	WB 1:500 - 1:2000. IF 1:200 - 1:1000. ELISA: 1:20000. Not yet tested in other applications.
Purification :	The antibody was affinity-purified from rabbit antiserum by affinity-chromatography using epitope-specific immunogen.

Concentration :	1 mg/ml
Storage Stability :	-15°C to -25°C/1 year(Do not lower than -25°C)
Observed Band :	89kD
Cell Pathway :	NOD-like receptor;
Background :	<p>This gene was identified as a gene whose expression is rapidly induced by the tumor necrosis factor (TNF). The protein encoded by this gene is a zinc finger protein and ubiquitin-editing enzyme, and has been shown to inhibit NF-kappa B activation as well as TNF-mediated apoptosis. The encoded protein, which has both ubiquitin ligase and deubiquitinase activities, is involved in the cytokine-mediated immune and inflammatory responses. Several transcript variants encoding the same protein have been found for this gene. [provided by RefSeq, Jul 2012],</p>
Function :	<p>function:Interacts with NAF1 and inhibits TNF-induced NF-kappa-B-dependent gene expression by interfering with an RIP- or TRAF2-mediated transactivation signal. Inhibitor of programmed cell death. Has a role in the function of the lymphoid system and may contribute to the in vivo effects of TNF (By similarity). Has deubiquitinating activity that is directed towards 'Lys-48' or 'Lys-63'-linked polyubiquitin chains.,induction:By TNF-alpha.,similarity:Belongs to the peptidase C64 family.,similarity:Contains 1 OTU domain.,similarity:Contains 7 A20-type zinc fingers.,subunit:Homodimer. Interacts with NAF1, TAX1BP1 and TRAF2.,</p>
Subcellular Location :	Cytoplasm. Nucleus. Lysosome.; [A20p50]: Cytoplasm.
Expression :	Epithelium,Testis,Trachea,
Sort :	1553
Host :	Rabbit
Modifications :	Unmodified

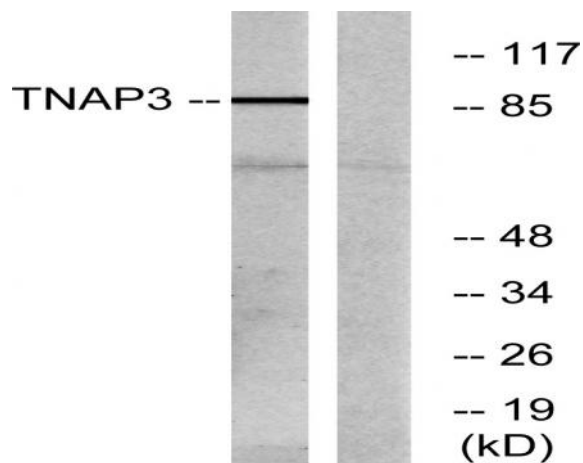
Products Images



Western Blot analysis of various cells using A20 Polyclonal Antibody



Immunofluorescence analysis of HepG2 cells, using TNAP3 Antibody. The picture on the right is blocked with the synthesized peptide.



Western blot analysis of lysates from RAW264.7 cells, using TNAP3 Antibody. The lane on the right is blocked with the synthesized peptide.