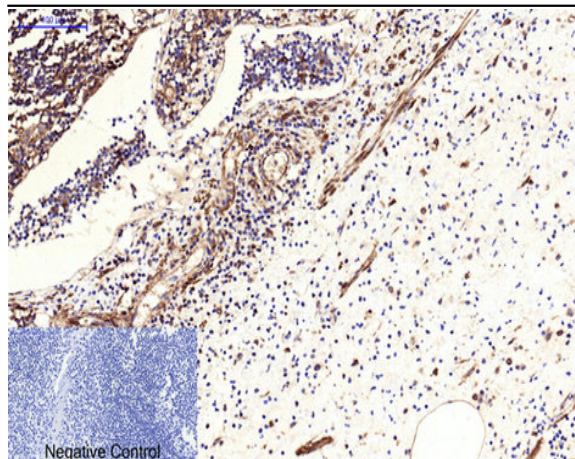


β-tubulin (HRP Conjugated) Monoclonal Antibody(5G3)

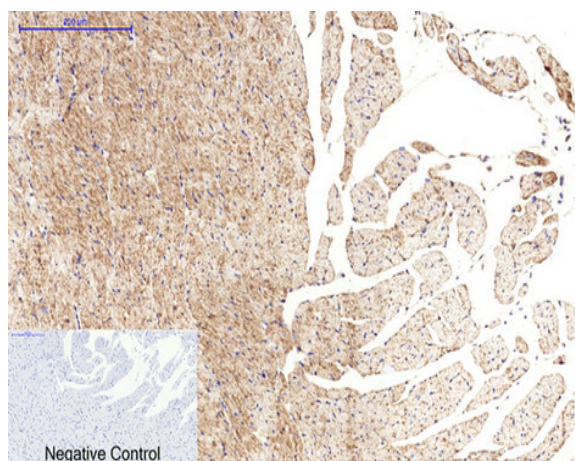
| | |
|------------------------------|--|
| Catalog No : | YM3460 |
| Reactivity : | Human;Rat;Mouse;Mk;Dg;Ch;Hamster;Rabbit;sheep;Insect;Yeast |
| Applications : | WB;IF;IHC |
| Target : | Tubulin β |
| Fields : | >>Phagosome;>>Gap junction;>>Alzheimer disease;>>Parkinson disease;>>Amyotrophic lateral sclerosis;>>Huntington disease;>>Prion disease;>>Pathways of neurodegeneration - multiple diseases;>>Pathogenic Escherichia coli infection;>>Salmonella infection |
| Gene Name : | TUBB |
| Protein Name : | Tubulin beta chain (Tubulin beta-5 chain) |
| Human Gene Id : | 203068 |
| Human Swiss Prot No : | P07437 |
| Mouse Swiss Prot No : | P99024 |
| Rat Swiss Prot No : | P69897 |
| Immunogen : | Recombinant Protein of β-tubulin (HRP Conjugated) |
| Specificity : | Theβ-tubulin antibody can detects endogenousβ-tubulin protein. |
| Formulation : | Liquid in PBS containing 50% glycerol, 0.5% BSA and 0.02% sodium azide. |
| Source : | Monoclonal, Mouse |
| Dilution : | WB 1:1000-1:3000,IHC 1:50-1:200 IF 1:200 |
| Purification : | The antibody was affinity-purified from mouse ascites by affinity-chromatography using epitope-specific immunogen. |

| | |
|-------------------------------|---|
| Concentration : | 1 mg/ml |
| Storage Stability : | -15°C to -25°C/1 year(Do not lower than -25°C) |
| Observed Band : | 55kD |
| Cell Pathway : | Gap junction;Pathogenic Escherichia coli infection; |
| Background : | This gene encodes a beta tubulin protein. This protein forms a dimer with alpha tubulin and acts as a structural component of microtubules. Mutations in this gene cause cortical dysplasia, complex, with other brain malformations 6. Alternative splicing results in multiple splice variants. There are multiple pseudogenes for this gene on chromosomes 1, 6, 7, 8, 9, and 13. [provided by RefSeq, Jun 2014], |
| Function : | domain:The highly acidic C-terminal region may bind cations such as calcium.,function:Tubulin is the major constituent of microtubules. It binds two moles of GTP, one at an exchangeable site on the beta chain and one at a non-exchangeable site on the alpha-chain.,online information:Tubulin entry,similarity:Belongs to the tubulin family.,subunit:Dimer of alpha and beta chains.,tissue specificity:Ubiquitously expressed with highest levels in spleen, thymus and immature brain., |
| Subcellular Location : | Cytoplasm, cytoskeleton . |
| Expression : | Ubiquitously expressed with highest levels in spleen, thymus and immature brain. |
| Sort : | 24879 |
| Host : | Mouse |
| Modifications : | Unmodified |

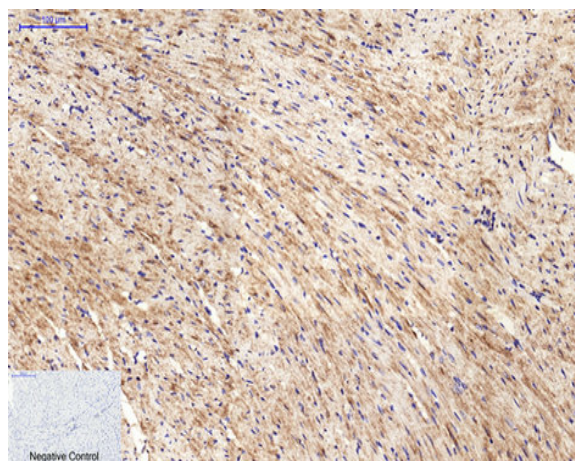
Products Images



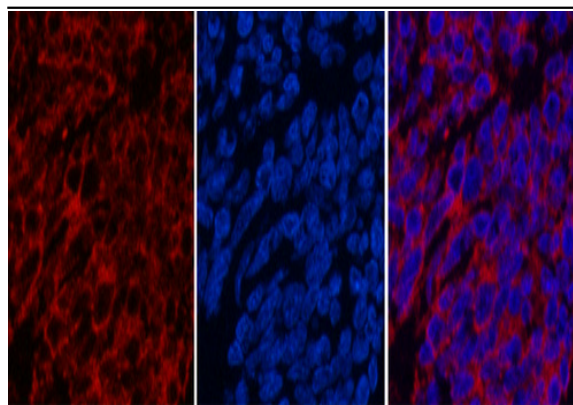
Immunohistochemical analysis of paraffin-embedded Human-Tonsil tissue. 1, β -tubulin (HRP Conjugated) Monoclonal Antibody(5G3) was diluted at 1:200(4 °C, overnight). 2, Sodium citrate pH 6.0 was used for antibody retrieval(>98 °C, 20min). 3, Secondary antibody was diluted at 1:200(room temperature, 30min). Negative control was used by secondary antibody only.



Immunohistochemical analysis of paraffin-embedded Rat-heart tissue. 1, β -tubulin (HRP Conjugated) Monoclonal Antibody(5G3) was diluted at 1:200(4 °C, overnight). 2, Sodium citrate pH 6.0 was used for antibody retrieval(>98 °C, 20min). 3, Secondary antibody was diluted at 1:200(room temperature, 30min). Negative control was used by secondary antibody only.



Immunohistochemical analysis of paraffin-embedded Mouse-heart tissue. 1, β -tubulin (HRP Conjugated) Monoclonal Antibody(5G3) was diluted at 1:200(4 °C, overnight). 2, Sodium citrate pH 6.0 was used for antibody retrieval(>98 °C, 20min). 3, Secondary antibody was diluted at 1:200(room temperature, 30min). Negative control was used by secondary antibody only.

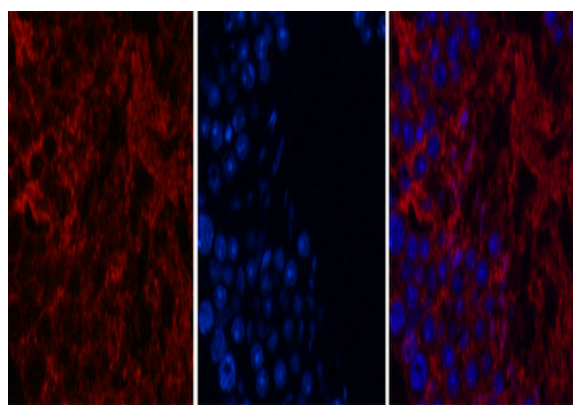


A

B

C

Immunofluorescence analysis of Human-lung-cancer tissue. 1, β -tubulin (HRP Conjugated) Monoclonal Antibody(5G3)(red) was diluted at 1:200(4°C, overnight). 2, Cy3 labeled Secondary antibody was diluted at 1:300(room temperature, 50min).3, Picture B: DAPI(blue) 10min. Picture A:Target. Picture B: DAPI. Picture C: merge of A+B

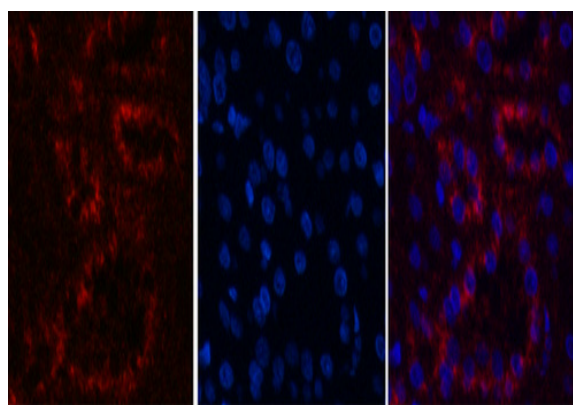


A

B

C

Immunofluorescence analysis of Mouse-testis tissue. 1, β -tubulin (HRP Conjugated) Monoclonal Antibody(5G3)(red) was diluted at 1:200(4°C, overnight). 2, Cy3 labeled Secondary antibody was diluted at 1:300(room temperature, 50min).3, Picture B: DAPI(blue) 10min. Picture A:Target. Picture B: DAPI. Picture C: merge of A+B

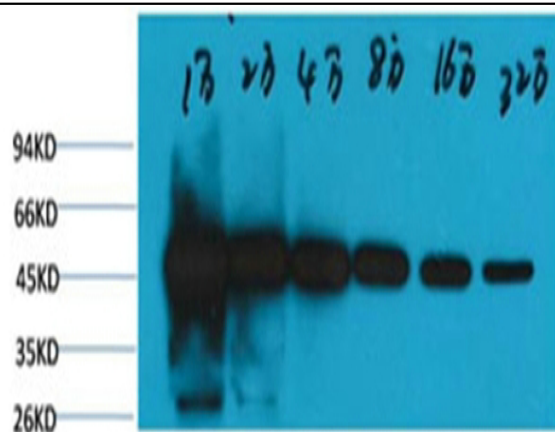


A

B

C

Immunofluorescence analysis of Rat-kidney tissue. 1, β -tubulin (HRP Conjugated) Monoclonal Antibody(5G3)(red) was diluted at 1:200(4°C, overnight). 2, Cy3 labeled Secondary antibody was diluted at 1:300(room temperature, 50min).3, Picture B: DAPI(blue) 10min. Picture A:Target. Picture B: DAPI. Picture C: merge of A+B



Western blot analysis of Hela, with β -tubulin-HRP Conjugated diluted at 1:10,000, 20,000, 40,000, 80,000, 160,000, 320,000.