

S100A4 (ABT-S100A4) mouse mAb

Catalog No :	YM6216
Reactivity :	Human;
Applications :	IHC;IF;ELISA
Target :	S100A4
Gene Name :	S100A4 CAPL MTS1
Protein Name :	Protein S100-A4 (Calvasculin) (Metastasin) (Placental calcium-binding protein) (Protein Mts1) (S100 calcium-binding protein A4)
Human Gene Id :	6275
Human Swiss Prot No :	P26447
Immunogen :	Synthesized peptide derived from human S100A4 AA range: 50-101
Specificity :	The antibody can specifically recognize human S100A4 protein, and has no cross reaction with S100A1 or S100A6.
Formulation :	PBS, 50% glycerol, 0.05% Proclin 300, 0.05%BSA
Source :	Mouse, Monoclonal/IgG1, kappa
Dilution :	IHC 1:200-400. IF 1:50-200. ELISA 1:500-5000
Purification :	The antibody was affinity-purified from ascites by affinity-chromatography using specific immunogen.
Storage Stability :	-15°C to -25°C/1 year(Do not lower than -25°C)
Molecularweight :	12kD
Background :	S100 calcium binding protein A4(S100A4) Homo sapiens The protein encoded by this gene is a member of the S100 family of proteins containing 2 EF-hand calcium-binding motifs. S100 proteins are localized in the cytoplasm and/or

nucleus of a wide range of cells, and involved in the regulation of a number of cellular processes such as cell cycle progression and differentiation. S100 genes include at least 13 members which are located as a cluster on chromosome 1q21. This protein may function in motility, invasion, and tubulin polymerization. Chromosomal rearrangements and altered expression of this gene have been implicated in tumor metastasis. Multiple alternatively spliced variants, encoding the same protein, have been identified. [provided by RefSeq, Jul 2008],

Function :

similarity:Belongs to the S-100 family.,similarity:Contains 2 EF-hand domains.,subunit:Homodimer. Interacts with PPFIBP1 in a calcium-dependent mode.,tissue specificity:Ubiquitously expressed.,

Subcellular Location :

Nuclear, Cytoplasmic

Expression :

Ubiquitously expressed.

Tag :

hot

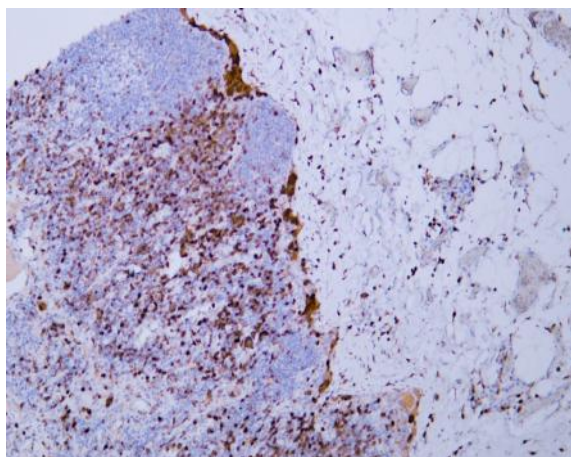
Sort :

800

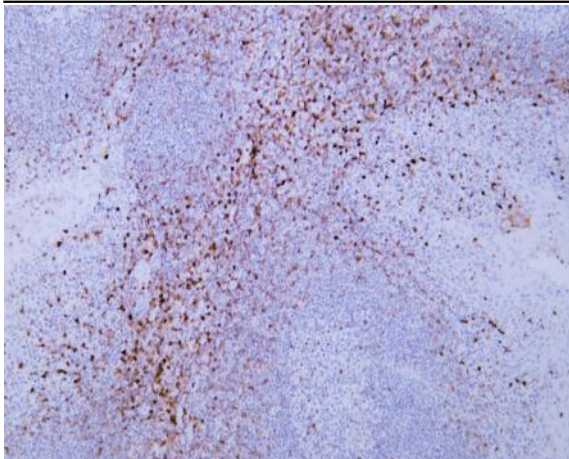
No4 :

1

Products Images



Human malignant melanoma tissue was stained with Anti-S100A4 (ABT-S100A4) Antibody



Human tonsil tissue was stained with Anti-S100A4 (ABT-S100A4) Antibody