

TCL1 (ABT378) mouse mAb (Ready to Use)

Catalog No :	YM6967R
Reactivity :	Human;
Applications :	IHC
Target :	TCL1
Fields :	>>PI3K-Akt signaling pathway
Gene Name :	TCL1A TCL1
Protein Name :	TCL1
Human Gene Id :	8115
Human Swiss Prot No :	P56279
Immunogen :	Synthesized peptide derived from human TCL1 AA range: 50-114
Specificity :	The antibody can specifically recognize human TCL1 protein.
Formulation :	The prediluted ready-to-use antibody is diluted in phosphate buffer saline containing stabilizing protein and 0.05% Proclin 300
Source :	Mouse, Monoclonal/IgG2b, kappa
Dilution :	Ready to use for IHC
Purification :	The antibody was affinity-purified from ascites by affinity-chromatography using specific immunogen.
Storage Stability :	2°C to 8°C/1 year
Background :	Overexpression of the TCL1 gene in humans has been implicated in the development of mature T cell leukemia, in which chromosomal rearrangements bring the TCL1 gene in close proximity to the T-cell antigen receptor (TCR)-alpha (MIM 186880) or TCR-beta (MIM 186930) regulatory elements (summarized by

Virgilio et al., 1998 [PubMed 9520462]). In normal T cells TCL1 is expressed in CD4-/CD8- cells, but not in cells at later stages of differentiation. TCL1 functions as a coactivator of the cell survival kinase AKT (MIM 164730) (Laine et al., 2000 [PubMed 10983986]).[supplied by OMIM, Jul 2010],

Function :

disease:Chromosomal aberrations activating TCL1A are found in chronic T-cell leukemias (T-CLL). Translocation t(14;14)(q11;q32); translocation t(7;14)(q35;q32); inversion inv(14)(q11;q32) that involves the T-cell receptor alpha/delta locuses.,function:Enhances the phosphorylation and activation of AKT1, AKT2 and AKT3. Promotes nuclear translocation of AKT1. Enhances cell proliferation, stabilizes mitochondrial membrane potential and promotes cell survival.,similarity:Belongs to the TCL1 family.,subcellular location:Microsomal fraction.,subunit:Homodimer. Interacts with AKT1, AKT2 and AKT3 (via PH domain). Interacts with PNPT1; the interaction has no effect on PNPT1 exonuclease activity.,tissue specificity:Restricted in the T-cell lineage to immature thymocytes and activated peripheral lymphocytes. Preferentially expressed early in T- and B-lymphocyte differentiation.,

Subcellular Location :

Cytoplasmic, Nuclear

Expression :

Restricted in the T-cell lineage to immature thymocytes and activated peripheral lymphocytes. Preferentially expressed early in T- and B-lymphocyte differentiation.

Tag :

hot

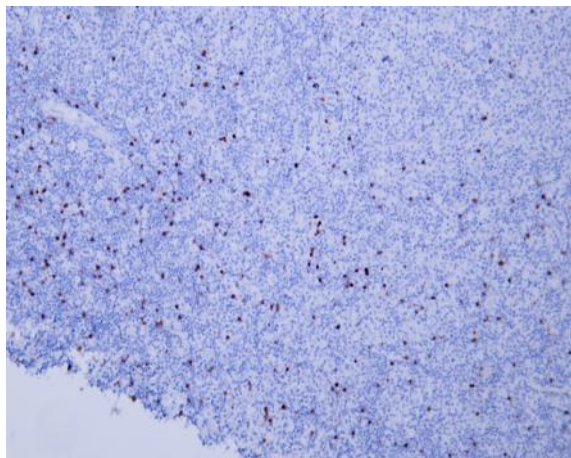
Sort :

25046

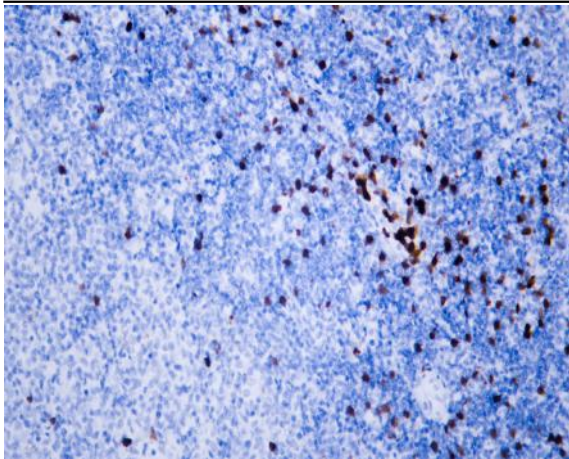
No4 :

1

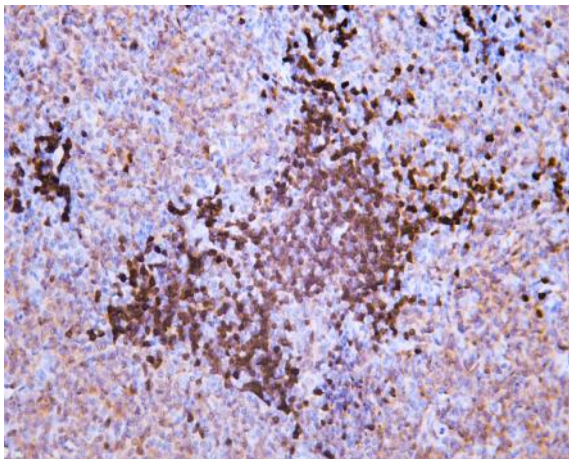
Products Images



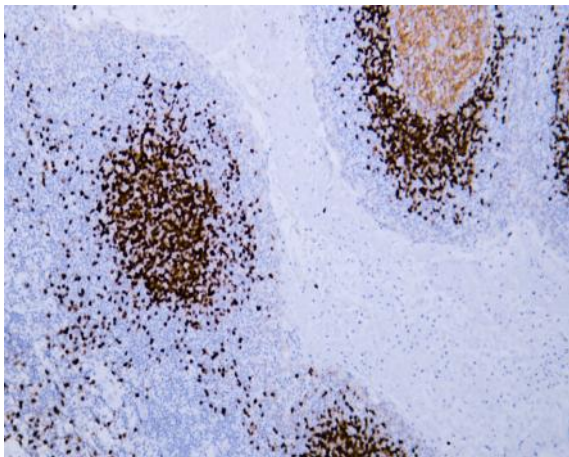
Human diffuse large B-cell lymphoma tissue was stained with Anti-TCL1 (ABT378) Antibody



Human diffuse large B-cell lymphoma tissue was stained with Anti-TCL1 (ABT378) Antibody



Human follicular lymphoma tissue was stained with Anti-TCL1 (ABT378) Antibody



Human tonsil tissue was stained with Anti-TCL1 (ABT378) Antibody