

## S100P (ABT229) mouse mAb (Ready to Use)

<b>Catalog No :</b>	YM6909R
<b>Reactivity :</b>	Human;
<b>Applications :</b>	IHC
<b>Target :</b>	S100P
<b>Gene Name :</b>	S100P S100E
<b>Protein Name :</b>	S100P
<b>Human Gene Id :</b>	6286
<b>Human Swiss Prot No :</b>	P25815
<b>Immunogen :</b>	Synthesized peptide derived from human S100P AA range: 1-95
<b>Specificity :</b>	The antibody can specifically recognize human S100P protein.
<b>Formulation :</b>	The prediluted ready-to-use antibody is diluted in phosphate buffer saline containing stabilizing protein and 0.05% Proclin 300
<b>Source :</b>	Mouse, Monoclonal/IgG1, kappa
<b>Dilution :</b>	Ready to use for IHC
<b>Purification :</b>	The antibody was affinity-purified from ascites by affinity-chromatography using specific immunogen.
<b>Storage Stability :</b>	2°C to 8°C/1 year
<b>Background :</b>	The protein encoded by this gene is a member of the S100 family of proteins containing 2 EF-hand calcium-binding motifs. S100 proteins are localized in the cytoplasm and/or nucleus of a wide range of cells, and involved in the regulation of a number of cellular processes such as cell cycle progression and differentiation. S100 genes include at least 13 members which are located as a cluster on chromosome 1q21; however, this gene is located at 4p16. This protein, in addition to binding Ca <sup>2+</sup> , also binds Zn <sup>2+</sup> and Mg <sup>2+</sup> . This protein may play a

---

role in the etiology of prostate cancer. [provided by RefSeq, Jul 2008],

---

**Function :**

miscellaneous:This protein binds two calcium ions.,similarity:Belongs to the S-100 family.,similarity:Contains 2 EF-hand domains.,subcellular location:Colocalizes with S100BP in the nucleus.,subunit:Homodimer. Interacts with S100BP and S100Z.,tissue specificity:Up-regulated in various pancreatic ductal adenocarcinomas and pancreatic intraepithelial neoplasias.,

---

**Subcellular Location :**

Nuclear, Cytoplasmic

---

**Expression :**

Detected in all of the tissues except brain, testis and small intestine, expression level is higher in placenta, heart, lung, skeletal muscle, spleen and leukocyte. Up-regulated in various pancreatic ductal adenocarcinomas and pancreatic intraepithelial neoplasias.

---

**Tag :**

hot

---

**Sort :**

800

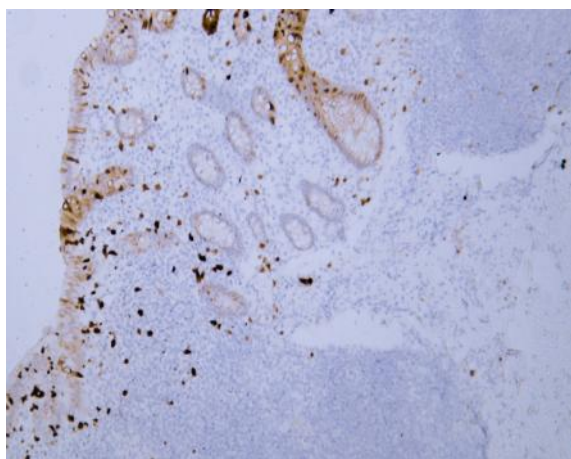
---

**No4 :**

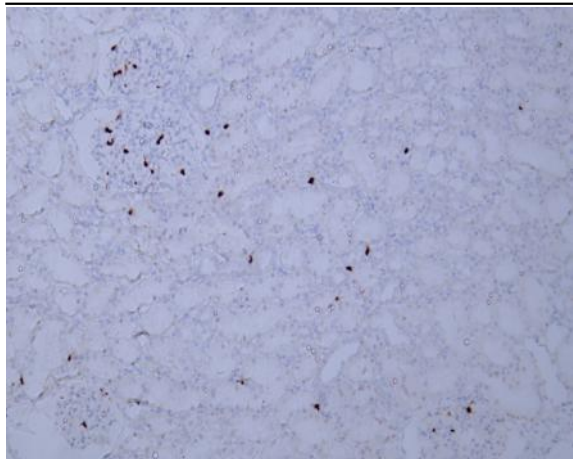
1

---

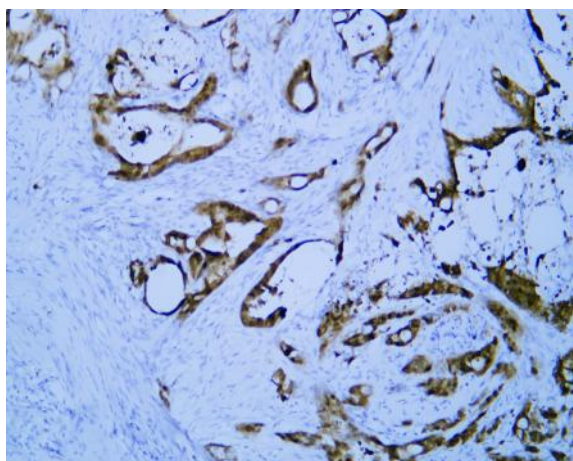
## Products Images



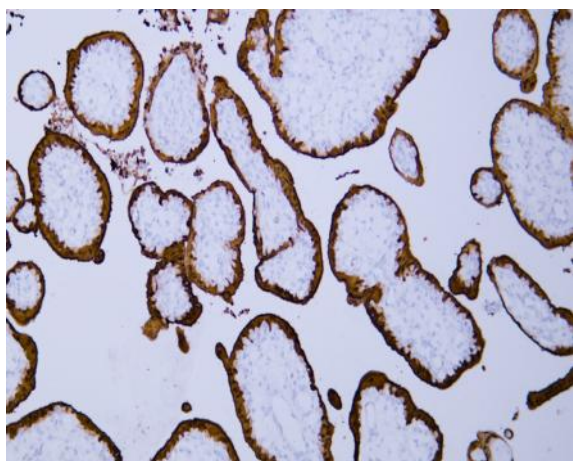
Human appendix tissue was stained with Anti-S100P (ABT229) Antibody



Human kidney tissue was stained with Anti-S100P (ABT229) Antibody



Human pancreatic cancer tissue was stained with Anti-S100P (ABT229) Antibody



Human placenta tissue was stained with Anti-S100P (ABT229) Antibody