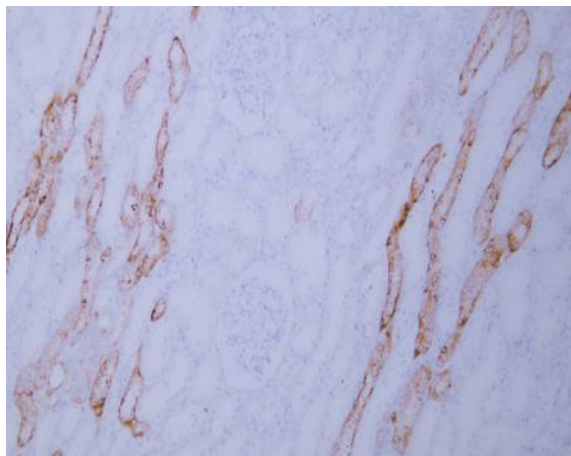


Prostatic Acid Phosphatase (PAP) (ABT119) Mouse mAb (Ready to Use)

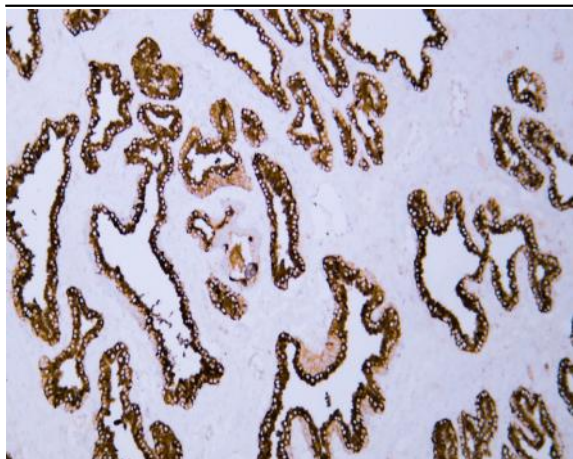
| | |
|------------------------------|--|
| Catalog No : | YM6906R |
| Reactivity : | Human;Mouse;Rat; |
| Applications : | IHC |
| Target : | PSAP |
| Gene Name : | ACPP |
| Protein Name : | PSAP |
| Human Gene Id : | 55 |
| Human Swiss Prot No : | P15309 |
| Immunogen : | Synthesized peptide derived from human PSAP AA range: 201-300 |
| Specificity : | The antibody can specifically recognize human PSAP protein. |
| Formulation : | The prediluted ready-to-use antibody is diluted in phosphate buffer saline containing stabilizing protein and 0.05% Proclin 300 |
| Source : | Mouse, Monoclonal/IgG2b, kappa |
| Dilution : | Ready to use for IHC |
| Purification : | The antibody was affinity-purified from ascites by affinity-chromatography using specific immunogen. |
| Storage Stability : | 2°C to 8°C/1 year |
| Background : | This gene encodes an enzyme that catalyzes the conversion of orthophosphoric monoester to alcohol and orthophosphate. It is synthesized under androgen regulation and is secreted by the epithelial cells of the prostate gland. An alternatively spliced transcript variant encoding a longer isoform has been found for this gene. This isoform contains a transmembrane domain and is localized in the plasma membrane-endosomal-lysosomal pathway. [provided by RefSeq, Sep 2008], |

| | |
|-------------------------------|---|
| Function : | catalytic activity:A phosphate monoester + H(2)O = an alcohol + phosphate.,similarity:Belongs to the histidine acid phosphatase family.,subcellular location:Predominantly localized in the plasma membrane but also detected in intracellular vesicles.,subunit:Homodimer., |
| Subcellular Location : | Cytoplasmic |
| Expression : | Highly expressed in the prostate, restricted to glandular and ductal epithelial cells. Also expressed in bladder, kidney, pancreas, lung, cervix, testis and ovary. Weak expression in a subset of pancreatic islet cells, squamous epithelia, the pilosebaceous unit, colonic neuroendocrine cells and skin adnexal structures. Low expression in prostate carcinoma cells and tissues. ; [Isoform 2]: Widely expressed. Expressed in the sarcolemma of skeletal muscle. |
| Tag : | hot |
| Sort : | 800 |
| No4 : | 1 |

Products Images



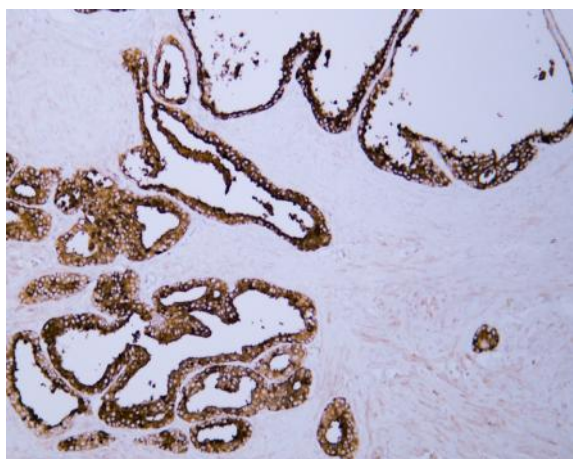
Human kidney tissue was stained with Anti-Prostatic Acid Phosphatase (ABT119) Antibody



Human prostate tissue was stained with Anti-Prostatic Acid Phosphatase (ABT119) Antibody



Human prostate tissue was stained with Anti-Prostatic Acid Phosphatase (ABT119) Antibody



Human prostatic adenocarcinoma tissue was stained with Anti-Prostatic Acid Phosphatase (ABT119) Antibody