

## Calcitonin (ABT124) mouse mAb (Ready to Use)

<b>Catalog No :</b>	YM6824R
<b>Reactivity :</b>	Human;
<b>Applications :</b>	IHC
<b>Target :</b>	Calcitonin
<b>Gene Name :</b>	CALCA CALC1
<b>Protein Name :</b>	Calcitonin
<b>Human Gene Id :</b>	796
<b>Human Swiss Prot No :</b>	P01258
<b>Immunogen :</b>	Synthesized peptide derived from human Calcitonin AA range: 26-141
<b>Specificity :</b>	The antibody can specifically recognize human Calcitonin protein.
<b>Formulation :</b>	The prediluted ready-to-use antibody is diluted in phosphate buffer saline containing stabilizing protein and 0.05% Proclin 300
<b>Source :</b>	Mouse, Monoclonal/IgG1, kappa
<b>Dilution :</b>	Ready to use for IHC
<b>Purification :</b>	The antibody was affinity-purified from ascites by affinity-chromatography using specific immunogen.
<b>Storage Stability :</b>	2°C to 8°C/1 year
<b>Function :</b>	function:Calcitonin causes a rapid but short-lived drop in the level of calcium and phosphate in blood by promoting the incorporation of those ions in the bones.,function:CGRP induces vasodilation. It dilates a variety of vessels including the coronary, cerebral and systemic vasculature. Its abundance in the CNS also points toward a neurotransmitter or neuromodulator role. It also elevates platelet cAMP.,function:Katacalcin is a potent plasma calcium-lowering peptide.,online information:Calcitonin entry,similarity:Belongs to the calcitonin

family.,

**Subcellular  
Location :**

Cytoplasmic

**Tag :**

hot

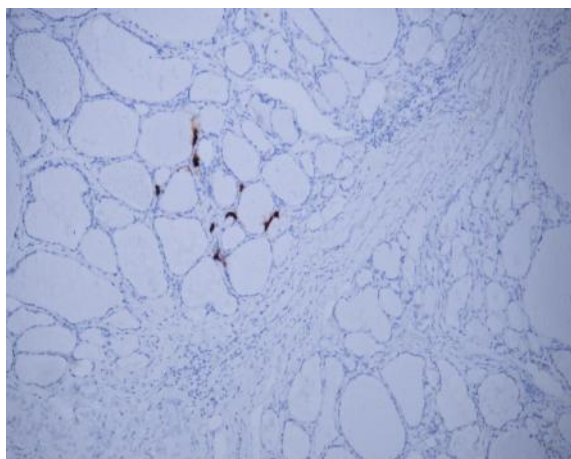
**Sort :**

800

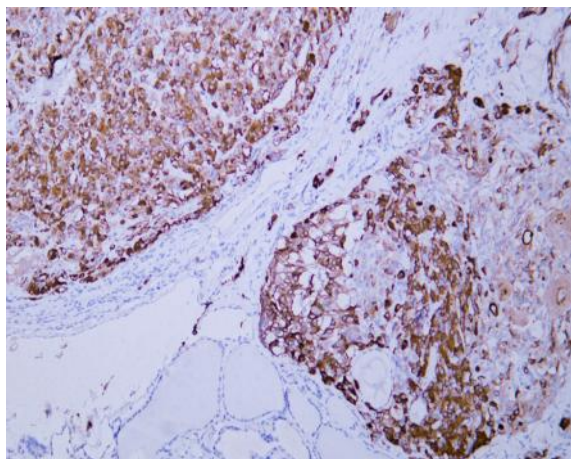
**No4 :**

1

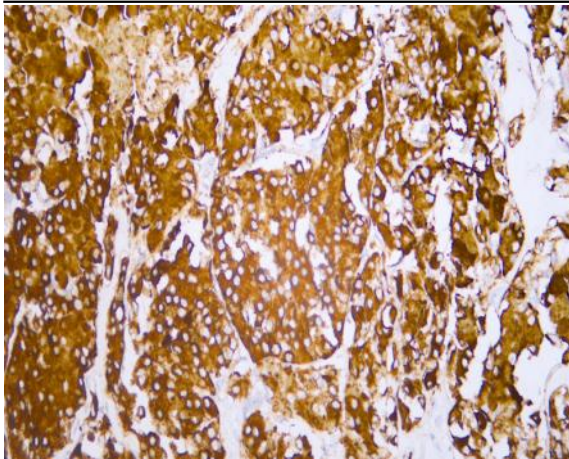
## Products Images



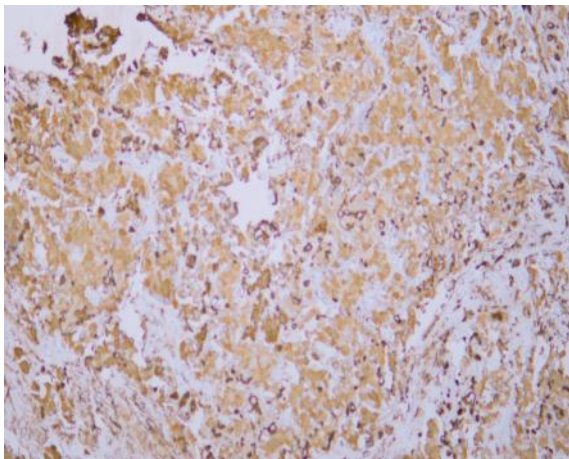
Human thyroid tissue was stained with anti-Calcitonin(ABT124) antibody.



Human thyroid atypical adenoma tissue was stained with anti-Calcitonin(ABT124) antibody.



Human thyroid medullary carcinoma tissue was stained with anti-Calcitonin(ABT124) antibody.



Human thyroid papillary carcinoma tissue was stained with anti-Calcitonin(ABT124) antibody.