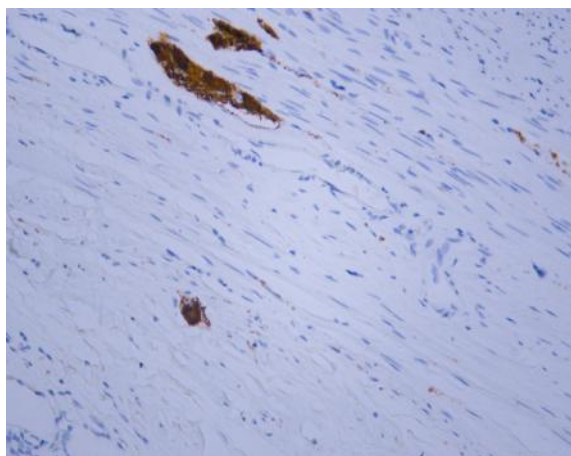


## Calretinin (ABT-Calret 1) mouse mAb (Ready to Use)

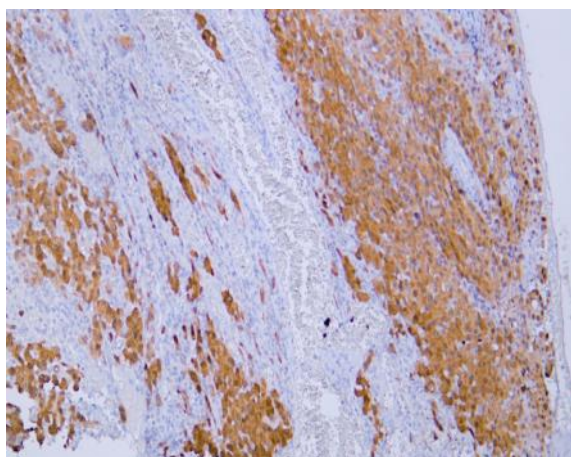
<b>Catalog No :</b>	YM6569R
<b>Reactivity :</b>	Human;Mouse;Rat;
<b>Applications :</b>	IHC
<b>Target :</b>	Calretinin
<b>Gene Name :</b>	CALB2 CAB29
<b>Protein Name :</b>	Calretinin (CR) (29 kDa calbindin)
<b>Human Gene Id :</b>	794
<b>Human Swiss Prot No :</b>	P22676
<b>Immunogen :</b>	Recombinant protein
<b>Specificity :</b>	The antibody can specifically recognize human Calretinin protein.
<b>Formulation :</b>	The prediluted ready-to-use antibody is diluted in phosphate buffer saline containing stabilizing protein and 0.05% Proclin 300
<b>Source :</b>	Mouse, Monoclonal/IgG2a, kappa
<b>Dilution :</b>	Ready to use for IHC
<b>Purification :</b>	The antibody was affinity-purified from ascites by affinity-chromatography using specific immunogen.
<b>Storage Stability :</b>	2°C to 8°C/1 year
<b>Background :</b>	This gene encodes an intracellular calcium-binding protein belonging to the troponin C superfamily. Members of this protein family have six EF-hand domains which bind calcium. This protein plays a role in diverse cellular functions, including message targeting and intracellular calcium buffering. It also functions as a modulator of neuronal excitability, and is a diagnostic marker for some human diseases, including Hirschsprung disease and some cancers. Alternative splicing results in multiple transcript variants. [provided by RefSeq, Jun 2010],

<b>Function :</b>	function:Calretinin is a calcium-binding protein which is abundant in auditory neurons.,online information:Calbindin entry,similarity:Belongs to the calbindin family.,similarity:Contains 6 EF-hand domains.,tissue specificity:Brain.,
<b>Subcellular Location :</b>	Cytoplasmic, Nuclear
<b>Expression :</b>	Brain.
<b>Tag :</b>	hot
<b>Sort :</b>	800

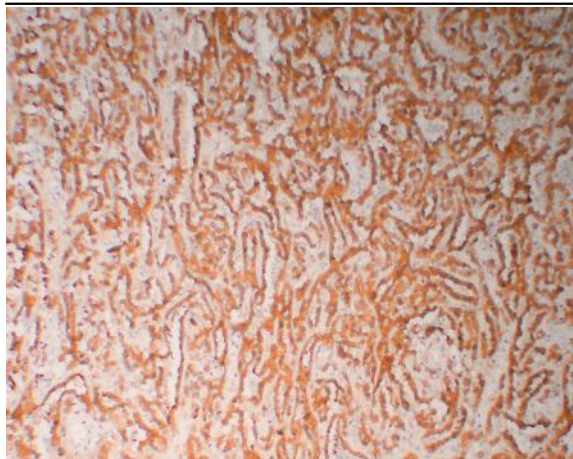
## Products Images



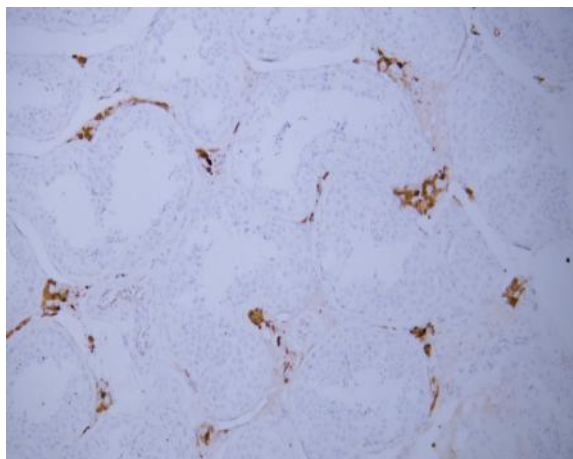
Human appendix tissue was stained with anti-Calretinin(ABT-Calret 1) antibody.



Human mesothelioma tissue was stained with anti-Calretinin(ABT-Calret 1) antibody.



Human mesothelioma tissue was stained with anti-Calretinin(ABT-Calret 1) antibody.



Human testis tissue was stained with anti-Calretinin(ABT-Calret 1) antibody.