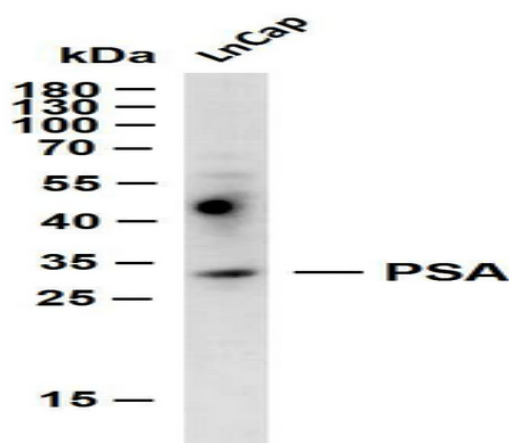


PSA (ABT-PSA) mouse mAb

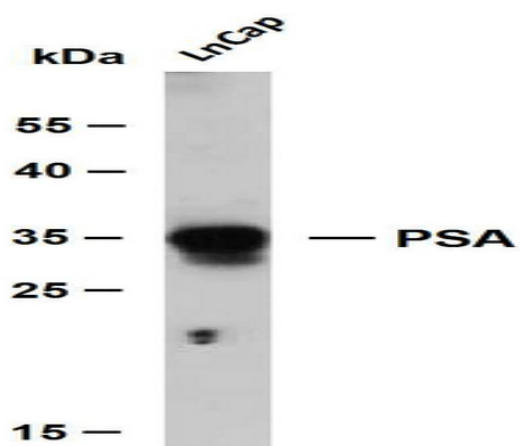
Catalog No :	YM4893
Reactivity :	Human;
Applications :	IHC;WB;IF;ELISA
Target :	PSA
Fields :	>>Pathways in cancer;>>Prostate cancer
Gene Name :	KLK3 APS
Protein Name :	Prostate-specific antigen (PSA) (EC 3.4.21.77) (Gamma-seminoprotein) (Seminin) (Kallikrein-3) (P-30 antigen) (Semenogelase)
Human Gene Id :	354
Human Swiss Prot No :	P07288
Immunogen :	Synthesized peptide derived from human Prostate-Specific Antigen(PSA) AA range: 100-200
Specificity :	The antibody can specifically recognize human PSA protein.
Formulation :	PBS, 50% glycerol, 0.05% Proclin 300, 0.05%BSA
Source :	Mouse, Monoclonal/IgG1, kappa
Dilution :	IHC 1:200-1000. WB 1:500-2000. IF 1:100-500. ELISA 1:1000-5000
Purification :	Protein G
Storage Stability :	-15°C to -25°C/1 year(Do not lower than -25°C)
Molecularweight :	28kD
Observed Band :	28kD

Cell Pathway :	Pathways in cancer;Prostate cancer;
Background :	PSA is a glycoprotein synthesized by prostate epithelial cells. It is expressed in normal prostate acinar cells, ductal epithelial cells and intraluminal secretions. It is one of the specific prostate markers. It is mainly used for the diagnosis of prostate cancer and metastatic prostate cancer.
Function :	catalytic activity:Preferential cleavage: -Tyr- -Xaa-,function:Hydrolyzes semenogelin-1 thus leading to the liquefaction of the seminal coagulum.,online information:Prostate-specific antigen entry,similarity:Belongs to the peptidase S1 family.,similarity:Belongs to the peptidase S1 family. Kallikrein subfamily.,similarity:Contains 1 peptidase S1 domain.,
Subcellular Location :	Cytoplasmic
Expression :	Leukocyte,PNS,Prostate,
Sort :	13051
No4 :	1

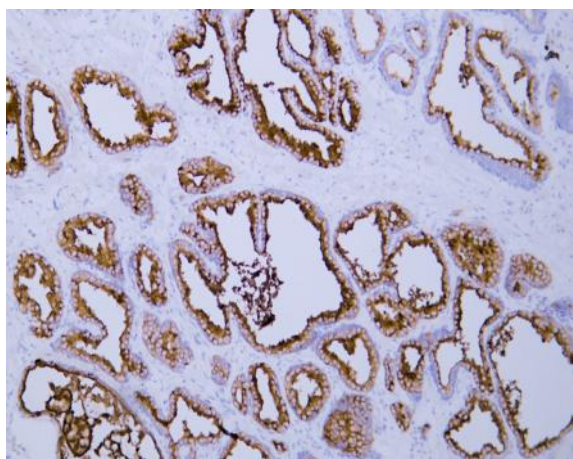
Products Images



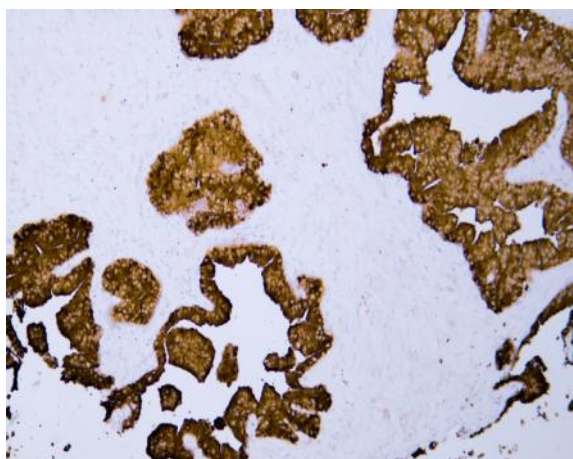
LnCap whole cell lysates were separated by 12% SDS-PAGE, and the membrane was blotted with anti-PSA (ABT-PSA) antibody. The HRP-conjugated Goat anti-Mouse IgG(H + L) antibody was used to detect the antibody. Lane 1: LnCap



Whole cell lysates were separated by 10% SDS-PAGE, and the membrane was blotted with anti-PSA (ABT-PSA) antibody. The HRP-conjugated Goat anti-Mouse IgG(H + L) antibody was used to detect the antibody. Lane 1: LnCap



Human prostate tissue was stained with Anti-Prostate-Specific Antigen (ABT-PSA) Antibody



Human prostatic adenocarcinoma tissue was stained with Anti-Prostate-Specific Antigen (ABT-PSA) Antibody