

PMEL/Melanoma gp100 (HMB45) (ABT255) Mouse mAb

Catalog No :	YM4856
Reactivity :	Human;Mouse;
Applications :	IHC;WB;IF;ELISA
Target :	HMB45
Gene Name :	PMEL D12S53E PMEL17 SILV
Protein Name :	95 kDa melanocyte specific secreted glycoprotein;95 kDa melanocyte-specific secreted glycoprotein;D12S53E;gp100;M-beta;ME20;ME20 M/ME20 S;ME20-M;ME20-S;ME20M;ME20M/ME20S;ME20S;Melanocyte lineage speci
Human Swiss Prot No :	P40967
Mouse Swiss Prot No :	Q60696
Immunogen :	Synthesized peptide derived from human PMEL AA range: 400-500
Specificity :	The antibody can specifically recognize human PMEL protein.
Formulation :	PBS, 50% glycerol, 0.05% Proclin 300, 0.05%BSA
Source :	Mouse, Monoclonal/IgG1, kappa
Dilution :	IHC 1:200-1000. WB 1:500-2000. IF 1:100-500. ELISA 1:1000-5000
Purification :	Protein G
Storage Stability :	-15°C to -25°C/1 year(Do not lower than -25°C)
Molecularweight :	70kD
Observed Band :	80kD
Background :	PMEL is a type I transmembrane glycoprotein which is specific in malanocyte. PMEL is abundantly expressed in melanosomes, and plays a central role in the

biogenesis of melanosomes by involved in the maturation of melanosomes from stage I to II. It is highly expressed in all stages of melanoma progression, so the PMEL antibody can specifically labels melanoma cells.

Function :

function: Could be a melanogenic enzyme. Could represent an oncofetal self-antigen that is normally expressed at low levels in quiescent adult melanocytes but overexpressed by proliferating neonatal melanocytes and during tumor growth. Release of the soluble form, ME20-S, could protect tumor cells from antibody mediated immunity., similarity: Belongs to the Pmel-17/NMB family., similarity: Contains 1 PKD domain., subcellular location: Identified by mass spectrometry in melanosome fractions from stage I to stage IV., subcellular location: Probably product of proteolytic cleavage., tissue specificity: Preferentially expressed in melanomas. Some expression was found in dysplastic nevi. Not found in normal tissues nor in carcinomas.,

Subcellular Location :

Cytoplasmic

Expression :

Skin/ Melanoma

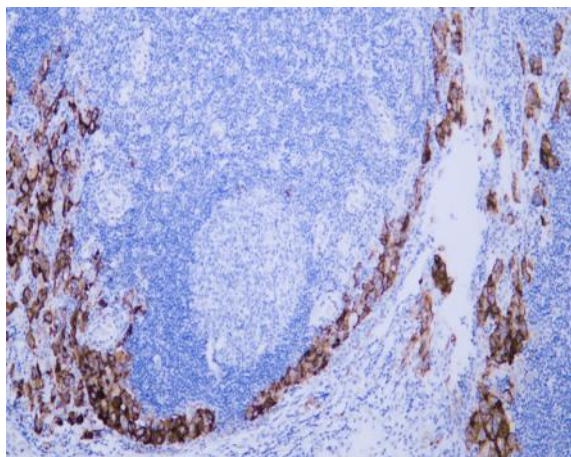
Sort :

999

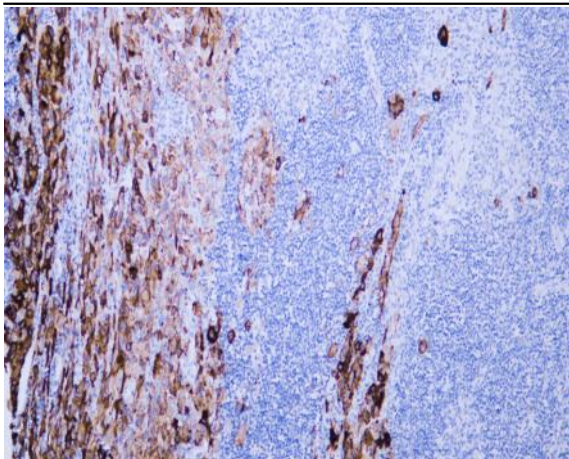
No4 :

1

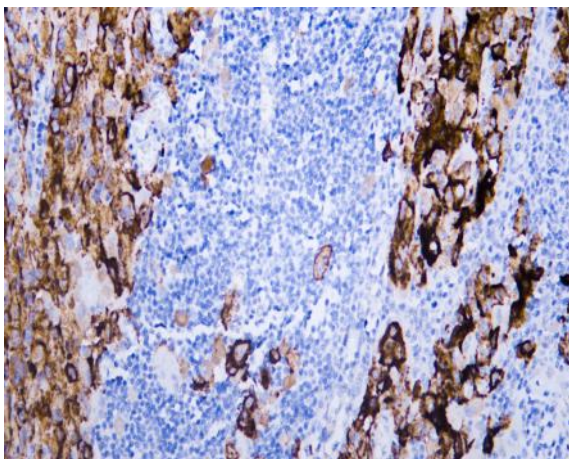
Products Images



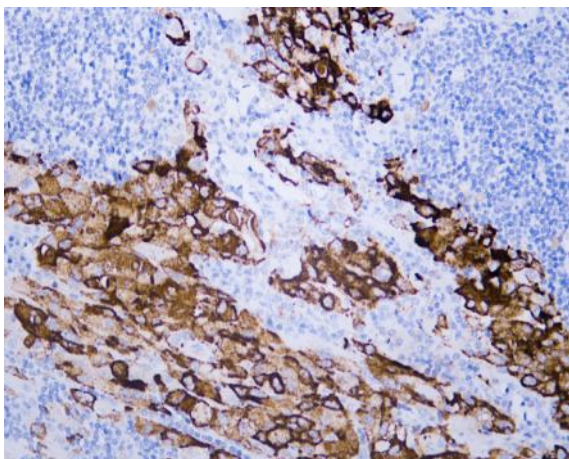
Human malignant melanoma tissue was stained with Anti-HMB45 (ABT255) Antibody



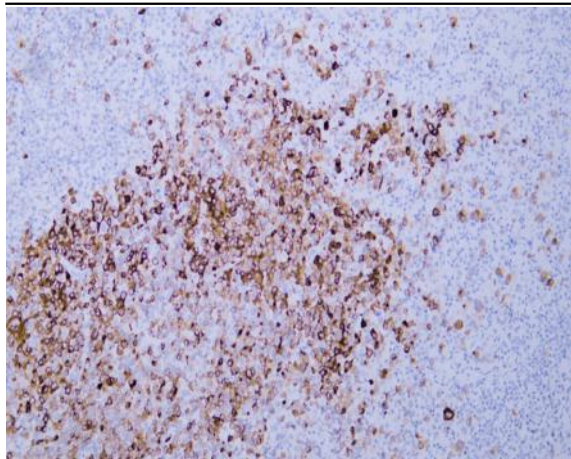
Human malignant melanoma tissue was stained with Anti-HMB45 (ABT255) Antibody



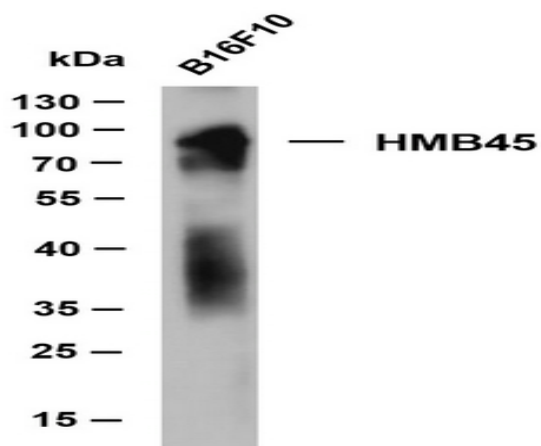
Human malignant melanoma tissue was stained with Anti-HMB45 (ABT255) Antibody



Human malignant melanoma tissue was stained with Anti-HMB45 (ABT255) Antibody



Human malignant melanoma tissue was stained with Anti-HMB45 (ABT255) Antibody



Whole cell lysates were separated by 10% SDS-PAGE, and the membrane was blotted with anti-HMB45 (ABT255) antibody. The HRP-conjugated Goat anti-Mouse IgG(H + L) antibody was used to detect the antibody. Lane 1: B16F10