

Alpha-1-Fetoprotein(AFP) (PT0679) Mouse mAb

Catalog No :	YM4089
Reactivity :	Human; Mouse (predicted: Rat)
Applications :	WB;IHC;ELISA
Target :	AFP
Fields :	>>Hippo signaling pathway
Gene Name :	AFP
Protein Name :	Alpha-1-Fetoprotein(AFP)
Human Gene Id :	174
Human Swiss Prot No :	P02771
Immunogen :	Synthesized peptide derived from human Alpha-1-Fetoprotein(AFP) AA range: 350-450
Specificity :	This antibody detects endogenous levels of human Alpha-1-Fetoprotein(AFP)
Formulation :	Liquid in PBS containing 50% glycerol, 0.5% BSA and 0.02% sodium azide.
Source :	Monoclonal, Mouse IgG1, Kappa
Dilution :	WB 1:500-2000, IHC 1:100-300, ELISA 1:5000-20000
Purification :	The antibody was affinity-purified from mouse ascites by affinity-chromatography using specific immunogen.
Storage Stability :	-15°C to -25°C/1 year (Do not lower than -25°C)
Molecularweight :	69kD
Background :	This gene encodes alpha-fetoprotein, a major plasma protein produced by the yolk sac and the liver during fetal life. Alpha-fetoprotein expression in adults is

often associated with hepatoma or teratoma. However, hereditary persistence of alpha-fetoprotein may also be found in individuals with no obvious pathology. The protein is thought to be the fetal counterpart of serum albumin, and the alpha-fetoprotein and albumin genes are present in tandem in the same transcriptional orientation on chromosome 4. Alpha-fetoprotein is found in monomeric as well as dimeric and trimeric forms, and binds copper, nickel, fatty acids and bilirubin. The level of alpha-fetoprotein in amniotic fluid is used to measure renal loss of protein to screen for spina bifida and anencephaly. [provided by RefSeq, Jul 2008],

Function :

developmental stage:Occurs in the plasma of fetuses more than 4 weeks old, reaches the highest levels during the 12th-16th week of gestation, and drops to trace amounts after birth. The serum level in adults is usually less than 40 ng/ml. AFP occurs also at high levels in the plasma and ascitic fluid of adults with hepatoma.,function:Binds copper, nickel, and fatty acids as well as, and bilirubin less well than, serum albumin. Only a small percentage (less than 2%) of the human AFP shows estrogen-binding properties.,online information:Alpha-fetoprotein entry,PTM:Independent studies suggest heterogeneity of the N-terminal sequence of the mature protein and of the cleavage site of the signal sequence.,PTM:Sulfated.,similarity:Belongs to the ALB/AFP/VDB family.,similarity:Contains 3 albumin domains.,subunit:Dimeric and trimeric forms have been found in addition to the monomeric form.,tissue

Subcellular Location :

Secreted.

Expression :

Plasma. Synthesized by the fetal liver and yolk sac.

Sort :

1919

No4 :

1

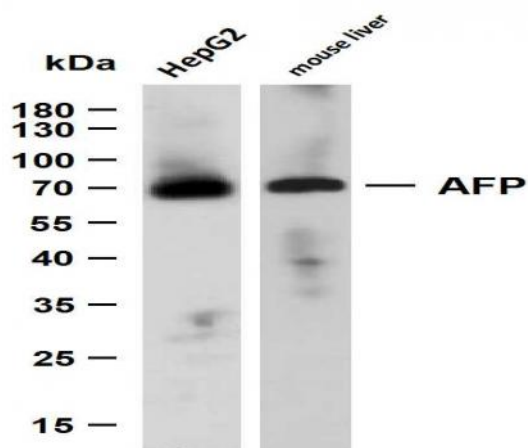
Host :

Mouse

Modifications :

Unmodified

Products Images



Various whole cell lysates were separated by 10% SDS-PAGE, and the membrane was blotted with anti-AFP (PT0679) antibody. The HRP-conjugated Goat anti-Mouse IgG(H + L) antibody was used to detect the antibody. Lane 1: HepG2 Lane 2: HepG2 Lane 3: mouse liver Predicted band size: 69kDa Observed band size: 69kDa