

## CD146 (PT0278) Mouse mAb

<b>Catalog No :</b>	YM4036
<b>Reactivity :</b>	Human
<b>Applications :</b>	WB;IHC;ELISA
<b>Target :</b>	CD146(PT0278)
<b>Gene Name :</b>	MCAM MUC18
<b>Protein Name :</b>	CD146
<b>Human Gene Id :</b>	4162
<b>Human Swiss Prot No :</b>	P43121
<b>Immunogen :</b>	Synthesized peptide derived from human CD146 AA range: 500-600
<b>Specificity :</b>	This antibody detects endogenous levels of human CD146
<b>Formulation :</b>	Liquid in PBS containing 50% glycerol, 0.5% BSA and 0.02% sodium azide.
<b>Source :</b>	Mouse, Monoclonal/IgG1, Kappa
<b>Dilution :</b>	IHC 1:100-300, WB 1:500-1000,ELISA 1:5000-20000
<b>Purification :</b>	The antibody was affinity-purified from mouse ascites by affinity-chromatography using specific immunogen.
<b>Storage Stability :</b>	-15°C to -25°C/1 year(Do not lower than -25°C)
<b>Molecularweight :</b>	72kD
<b>Background :</b>	function:Plays a role in cell adhesion, and in cohesion of the endothelial monolayer at intercellular junctions in vascular tissue. Its expression may allow melanoma cells to interact with cellular elements of the vascular system, thereby enhancing hematogeneous tumor spread. Could be an adhesion molecule active in neural crest cells during embryonic development. Acts as surface receptor that

triggers tyrosine phosphorylation of FYN and PTK2, and a transient increase in the intracellular calcium concentration.,similarity:Contains 2 Ig-like V-type (immunoglobulin-like) domains.,similarity:Contains 3 Ig-like C2-type (immunoglobulin-like) domains.,tissue specificity:Detected in endothelial cells in vascular tissue throughout the body. May appear at the surface of neural crest cells during their embryonic migration. Appears to be limited to vascular smooth muscle in normal adult tissues. Associated with tumor progression and the development of metastasis in human malignant melanoma. Expressed most strongly on metastatic lesions and advanced primary tumors and is only rarely detected in benign melanocytic nevi and thin primary melanomas with a low probability of metastasis.,

**Function :**

function:Plays a role in cell adhesion, and in cohesion of the endothelial monolayer at intercellular junctions in vascular tissue. Its expression may allow melanoma cells to interact with cellular elements of the vascular system, thereby enhancing hematogeneous tumor spread. Could be an adhesion molecule active in neural crest cells during embryonic development. Acts as surface receptor that triggers tyrosine phosphorylation of FYN and PTK2, and a transient increase in the intracellular calcium concentration.,similarity:Contains 2 Ig-like V-type (immunoglobulin-like) domains.,similarity:Contains 3 Ig-like C2-type (immunoglobulin-like) domains.,tissue specificity:Detected in endothelial cells in vascular tissue throughout the body. May appear at the surface of neural crest cells during their embryonic migration. Appears to be limited to vascular smooth muscle in normal adult tissues. Ass

**Subcellular Location :**

Membrane; Single-pass type I membrane protein.

**Expression :**

Detected in endothelial cells in vascular tissue throughout the body. May appear at the surface of neural crest cells during their embryonic migration. Appears to be limited to vascular smooth muscle in normal adult tissues. Associated with tumor progression and the development of metastasis in human malignant melanoma. Expressed most strongly on metastatic lesions and advanced primary tumors and is only rarely detected in benign melanocytic nevi and thin primary melanomas with a low probability of metastasis.

**Tag :**

orthogonal

**Sort :**

3391

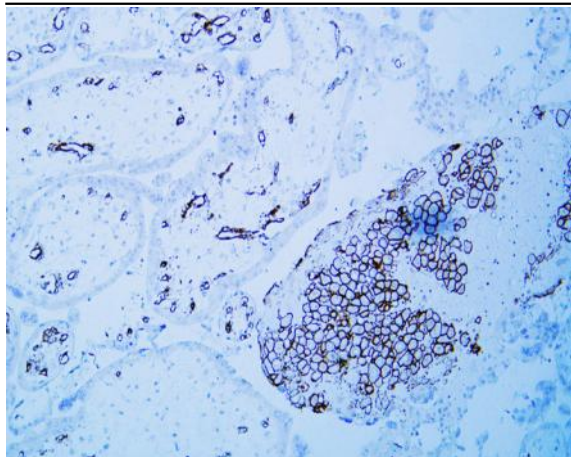
**Host :**

Mouse

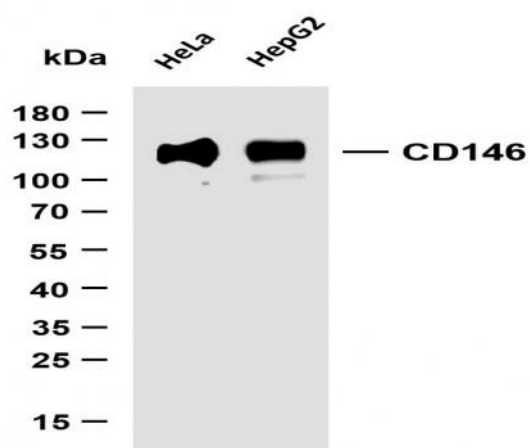
**Modifications :**

Unmodified

## Products Images



Human placenta tissue was stained with Anti-CD146 (PT0278) Antibody



Various whole cell lysates were separated by 15% SDS-PAGE, and the membrane was blotted with anti-CD146 (PT0278) antibody. The HRP-conjugated Goat anti-Mouse IgG(H + L) antibody was used to detect the antibody. Lane 1: HeLa Lane 2: HepG2 Predicted band size: 110kDa Observed band size: 110kDa