

Prostein (PTR1345) mouse mAb

Catalog No :	YM4763
Reactivity :	Human;
Applications :	IHC;IF;ELISA
Target :	SLC45A3
Gene Name :	SLC45A3 PCANAP6 PRST
Protein Name :	Solute carrier family 45 member 3 (Prostate cancer-associated protein 6) (Prostein)
Human Gene Id :	85414
Human Swiss Prot No :	Q96JT2
Mouse Gene Id :	212980
Mouse Swiss Prot No :	Q8K0H7
Immunogen :	Synthesized peptide derived from human Prostein AA range: 400-500
Specificity :	This antibody detects endogenous levels of Prostein protein.
Formulation :	PBS, 50% glycerol, 0.05% Proclin 300, 0.05%BSA
Source :	Mouse, Monoclonal/IgG2b, kappa
Dilution :	IHC 1:200-1000. IF 1:100-500. ELISA 1:1000-5000
Purification :	Protein G
Storage Stability :	-15°C to -25°C/1 year(Do not lower than -25°C)
Molecularweight :	59kD

Observed Band : 59kD

Background : Predicted to enable sucrose:proton symporter activity. Predicted to be involved in positive regulation of small molecule metabolic process; regulation of oligodendrocyte differentiation; and sucrose transport. Predicted to be located in plasma membrane. Predicted to be active in membrane. [provided by Alliance of Genome Resources, Apr 2022]

Function : Proton-associated sucrose transporter. May be able to transport also glucose and fructose.

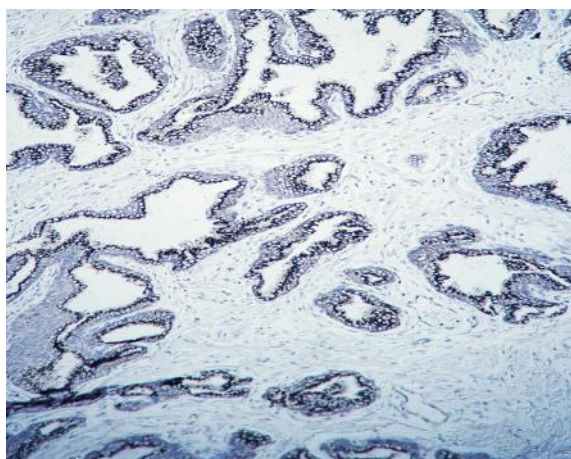
Subcellular Location : Membranous

Expression : Prostate specific. Expressed in all prostatic glandular cells. Expressed both in normal and cancerous prostates.

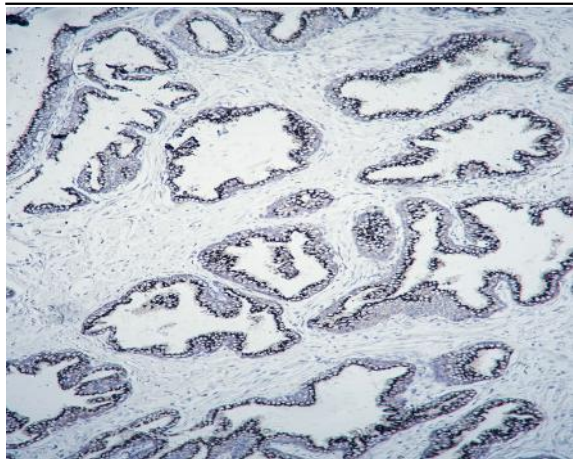
Sort : 27417

No4 : 1

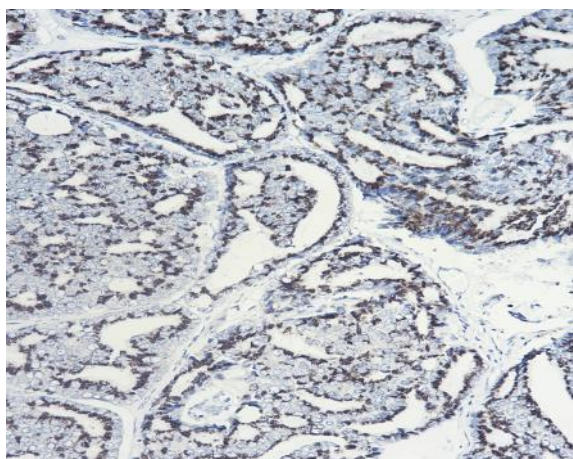
Products Images



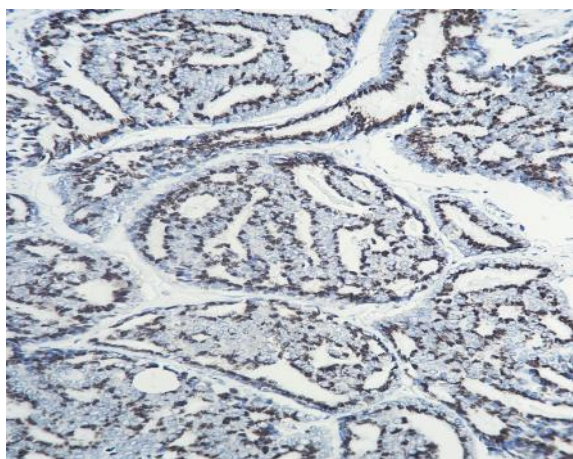
Human prostate tissue was stained with Anti-Prostein (PTR1345) Antibody



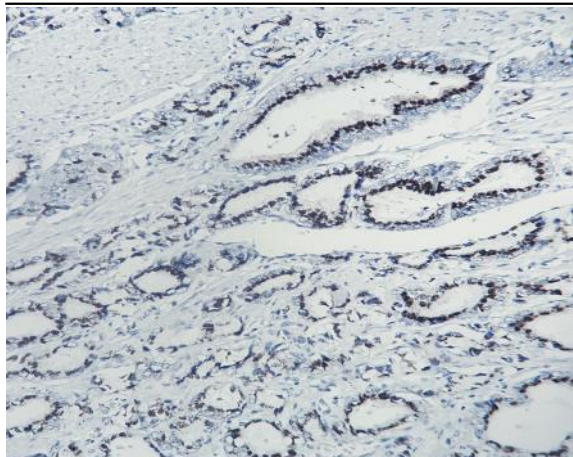
Human prostate tissue was stained with Anti-Prostein (PTR1345) Antibody



Human prostatic carcinoma tissue was stained with Anti-Prostein (PTR1345) Antibody



Human prostatic carcinoma tissue was stained with Anti-Prostein (PTR1345) Antibody



Human prostatic carcinoma tissue was stained with Anti-Prostein (PTR1345) Antibody