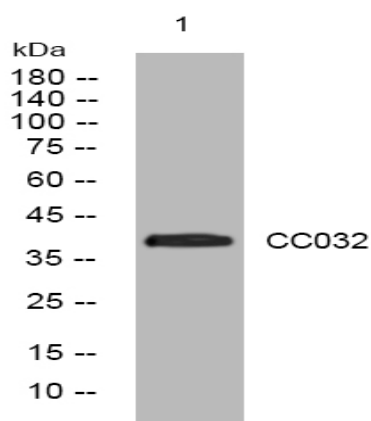


CC032 rabbit pAb

Catalog No :	YN3072
Reactivity :	Human;Mouse
Applications :	WB
Target :	CC032
Gene Name :	C3orf32 FLS485
Protein Name :	CC032
Human Gene Id :	51066
Human Swiss Prot No :	Q9Y2M2
Mouse Gene Id :	243612
Mouse Swiss Prot No :	Q8C3L1
Immunogen :	Synthesized peptide derived from human CC032 AA range: 273-323
Specificity :	This antibody detects endogenous levels of CC032 at Human/Mouse
Formulation :	Liquid in PBS containing 50% glycerol, 0.5% BSA and 0.02% sodium azide.
Source :	Polyclonal, Rabbit,IgG
Dilution :	WB 1:500-2000
Purification :	The antibody was affinity-purified from rabbit antiserum by affinity-chromatography using epitope-specific immunogen.
Concentration :	1 mg/ml
Storage Stability :	-15°C to -25°C/1 year(Do not lower than -25°C)

Observed Band :	38kD
Subcellular Location :	Cytoplasm . Nucleus .
Expression :	Expressed in enterocytes of small and large intestinal mucosa (at protein level). Expressed in chromaffine and interstitial cells. Expressed in peripheral blood and gingival cells (PubMed:27680507).
Sort :	18244
No4 :	1
Host :	Rabbit
Modifications :	Unmodified

Products Images



Western blot analysis of lysates from DU145 cells, primary antibody was diluted at 1:1000, 4° over night