

## OR2J1 Polyclonal Antibody

<b>Catalog No :</b>	YN2753
<b>Reactivity :</b>	Human;Rat;Mouse;
<b>Applications :</b>	WB;ELISA
<b>Target :</b>	OR2J1
<b>Fields :</b>	>>Olfactory transduction
<b>Gene Name :</b>	OR2J1 OR2J1P
<b>Protein Name :</b>	Olfactory receptor 2J1 (Hs6M1-4) (Olfactory receptor 6-5) (OR6-5)
<b>Human Swiss Prot No :</b>	Q9GZK6
<b>Immunogen :</b>	Synthesized peptide derived from human protein . at AA range: 230-310
<b>Specificity :</b>	OR2J1 Polyclonal Antibody detects endogenous levels of protein.
<b>Formulation :</b>	Liquid in PBS containing 50% glycerol, and 0.02% sodium azide.
<b>Source :</b>	Polyclonal, Rabbit,IgG
<b>Dilution :</b>	WB 1:500-2000 ELISA 1:5000-20000
<b>Purification :</b>	The antibody was affinity-purified from rabbit antiserum by affinity-chromatography using epitope-specific immunogen.
<b>Concentration :</b>	1 mg/ml
<b>Storage Stability :</b>	-15°C to -25°C/1 year(Do not lower than -25°C)
<b>Observed Band :</b>	34kD
<b>Background :</b>	Olfactory receptors interact with odorant molecules in the nose, to initiate a neuronal response that triggers the perception of a smell. The olfactory receptor proteins are members of a large family of G-protein-coupled receptors (GPCR)

arising from single coding-exon genes. Olfactory receptors share a 7-transmembrane domain structure with many neurotransmitter and hormone receptors and are responsible for the recognition and G protein-mediated transduction of odorant signals. The olfactory receptor gene family is the largest in the genome. The nomenclature assigned to the olfactory receptor genes and proteins for this organism is independent of other organisms. [provided by RefSeq, Jul 2008],

**Function :**

function:Odorant receptor .,polymorphism:A stop codon in the gene coding for this protein at position Gln-194 is responsible for functional diversity thus producing a pseudogene. The stop codon is more frequent in non-Africans than in African-Americans.,similarity:Belongs to the G-protein coupled receptor 1 family.,

**Subcellular Location :**

Cell membrane; Multi-pass membrane protein.

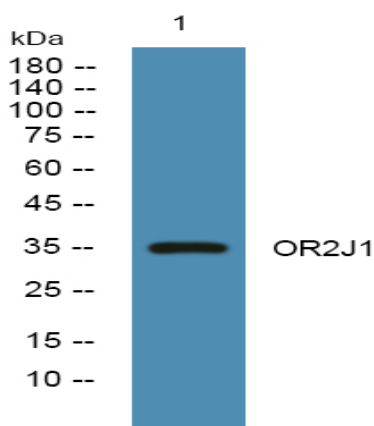
**Sort :**

20632

**No4 :**

1

## Products Images



Western blot analysis of lysates from HCT116 cells, primary antibody was diluted at 1:1000, 4° over night