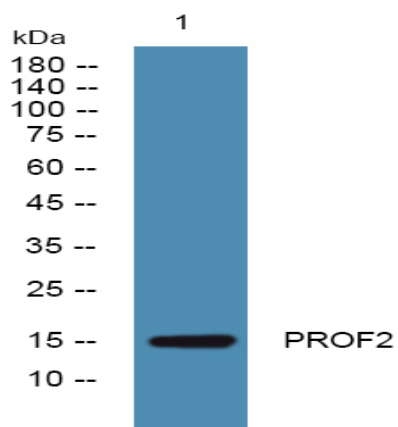


## PROF2 Polyclonal Antibody

<b>Catalog No :</b>	YN2844
<b>Reactivity :</b>	Human;Mouse;Rat
<b>Applications :</b>	WB;ELISA
<b>Target :</b>	PROF2
<b>Fields :</b>	>>Rap1 signaling pathway;>>Regulation of actin cytoskeleton;>>Amyotrophic lateral sclerosis;>>Shigellosis;>>Salmonella infection
<b>Gene Name :</b>	PFN2
<b>Protein Name :</b>	Profilin-2 (Profilin II)
<b>Human Gene Id :</b>	5217
<b>Human Swiss Prot No :</b>	P35080
<b>Mouse Swiss Prot No :</b>	Q9JJV2
<b>Rat Swiss Prot No :</b>	Q9EPC6
<b>Immunogen :</b>	Synthesized peptide derived from part region of human protein
<b>Specificity :</b>	PROF2 Polyclonal Antibody detects endogenous levels of protein.
<b>Formulation :</b>	Liquid in PBS containing 50% glycerol, and 0.02% sodium azide.
<b>Source :</b>	Polyclonal, Rabbit,IgG
<b>Dilution :</b>	WB 1:500-2000 ELISA 1:5000-20000
<b>Purification :</b>	The antibody was affinity-purified from rabbit antiserum by affinity-chromatography using epitope-specific immunogen.
<b>Concentration :</b>	1 mg/ml

<b>Storage Stability :</b>	-15°C to -25°C/1 year(Do not lower than -25°C)
<b>Observed Band :</b>	15kD
<b>Cell Pathway :</b>	Regulates Actin and Cytoskeleton;
<b>Background :</b>	The protein encoded by this gene is a ubiquitous actin monomer-binding protein belonging to the profilin family. It is thought to regulate actin polymerization in response to extracellular signals. There are two alternatively spliced transcript variants encoding different isoforms described for this gene. [provided by RefSeq, Jul 2008],
<b>Function :</b>	function: Binds to actin and affects the structure of the cytoskeleton. At high concentrations, profilin prevents the polymerization of actin, whereas it enhances it at low concentrations. By binding to PIP2, it inhibits the formation of IP3 and DG., similarity: Belongs to the profilin family., subunit: Occurs in many kinds of cells as a complex with monomeric actin in a 1:1 ratio., tissue specificity: Highly expressed in brain, skeletal muscle and kidney and less strongly in heart, placenta, lung and liver.,
<b>Subcellular Location :</b>	Cytoplasm, cytoskeleton.
<b>Expression :</b>	Highly expressed in brain, skeletal muscle and kidney and less strongly in heart, placenta, lung and liver.
<b>Sort :</b>	21050
<b>Host :</b>	Rabbit
<b>Modifications :</b>	Unmodified

## Products Images



Western blot analysis of lysates from K562 cells, primary antibody was diluted at 1:1000, 4° over night