

GBLP Polyclonal Antibody

Catalog No :	YN2123
Reactivity :	Human;Rat;Mouse
Applications :	WB;ELISA
Target :	GBLP
Fields :	>>Measles
Gene Name :	GNB2L1 HLC7 PIG21
Protein Name :	Guanine nucleotide-binding protein subunit beta-2-like 1 (Cell proliferation-inducing gene 21 protein) (Guanine nucleotide-binding protein subunit beta-like protein 12.3) (Human lung cancer oncogene 7
Human Gene Id :	10399
Human Swiss Prot No :	P63244
Mouse Swiss Prot No :	P68040
Rat Swiss Prot No :	P63245
Immunogen :	Synthesized peptide derived from part region of human protein
Specificity :	GBLP Polyclonal Antibody detects endogenous levels of protein.
Formulation :	Liquid in PBS containing 50% glycerol, and 0.02% sodium azide.
Source :	Polyclonal, Rabbit,IgG
Dilution :	WB 1:500-2000 ELISA 1:5000-20000
Purification :	The antibody was affinity-purified from rabbit antiserum by affinity-chromatography using epitope-specific immunogen.
Concentration :	1 mg/ml

Storage Stability : -15°C to -25°C/1 year (Do not lower than -25°C)

Observed Band : 34kD

Background : domain: The WD repeats domain 5 mediates interaction with TRIM63., function: Seems to bind protein kinase C acting as an intracellular receptor to anchor the activated PKC to the cytoskeleton. May be involved in up-regulation of the activity of kinases such as PKC via binding to KRT1. Together with KRT1 and ITGB1, serves as a platform for SRC activation or inactivation. May play an important role in the developing brain and neuronal differentiation., similarity: Belongs to the WD repeat G protein beta family., similarity: Contains 7 WD repeats., subcellular location: Located on plasma membrane of neuroblastoma NMB7 cells., subunit: Binds SLC9A3R1. Forms a ternary complex with TRIM63 and PRKCE. Interacts with HABP4 and KRT1.,

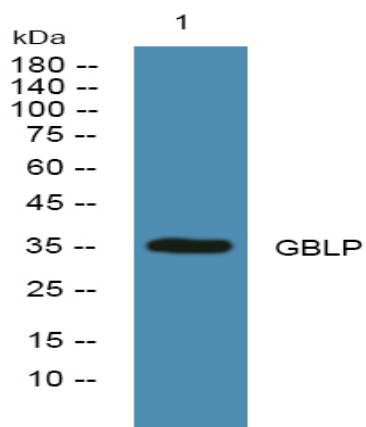
Function : domain: The WD repeats domain 5 mediates interaction with TRIM63., function: Seems to bind protein kinase C acting as an intracellular receptor to anchor the activated PKC to the cytoskeleton. May be involved in up-regulation of the activity of kinases such as PKC via binding to KRT1. Together with KRT1 and ITGB1, serves as a platform for SRC activation or inactivation. May play an important role in the developing brain and neuronal differentiation., similarity: Belongs to the WD repeat G protein beta family., similarity: Contains 7 WD repeats., subcellular location: Located on plasma membrane of neuroblastoma NMB7 cells., subunit: Binds SLC9A3R1. Forms a ternary complex with TRIM63 and PRKCE. Interacts with HABP4 and KRT1.,

Subcellular Location : Cell membrane ; Peripheral membrane protein. Cytoplasm . Cytoplasm, perinuclear region . Nucleus . Perikaryon . Cell projection, dendrite . Cell projection, phagocytic cup . Recruited to the plasma membrane through interaction with KRT1 which binds to membrane-bound ITGB1 (PubMed:17956333). Also associated with the membrane in oncogene-transformed cells (PubMed:11884618). PKC activation induces translocation from the perinuclear region to the cell periphery (PubMed:11279199). In the brain, detected mainly in cell bodies and dendrites with little expression in axonal fibers or nuclei (By similarity). Localized to phagocytic cups following infection by Y. pestis (PubMed:21347310). .

Expression : In the liver, expressed at higher levels in activated hepatic stellate cells than in hepatocytes or Kupffer cells. Up-regulated in hepatocellular carcinomas and in the adjacent non-tumor liver tissue.

Sort : 19232

Products Images



Western blot analysis of lysates from SW480 cells, primary antibody was diluted at 1:1000, 4° over night