

MSMB Polyclonal Antibody

Catalog No :	YN2122
Reactivity :	Human;Rat;Mouse
Applications :	WB;ELISA
Target :	MSMB
Gene Name :	MSMB PRSP
Protein Name :	Beta-microseminoprotein (Immunoglobulin-binding factor) (IGBF) (PN44) (Prostate secreted seminal plasma protein) (Prostate secretory protein of 94 amino acids) (PSP-94) (PSP94) (Seminal plasma beta-in
Human Gene Id :	4477
Human Swiss Prot No :	P08118
Mouse Swiss Prot No :	O08540
Rat Swiss Prot No :	P97580
Immunogen :	Synthesized peptide derived from part region of human protein AA range: 61-110
Specificity :	MSMB Polyclonal Antibody detects endogenous levels of protein.
Formulation :	Liquid in PBS containing 50% glycerol, and 0.02% sodium azide.
Source :	Polyclonal, Rabbit,IgG
Dilution :	WB 1:500-2000 ELISA 1:5000-20000
Purification :	The antibody was affinity-purified from rabbit antiserum by affinity-chromatography using epitope-specific immunogen.
Concentration :	1 mg/ml

Storage Stability : -15°C to -25°C/1 year(Do not lower than -25°C)

Observed Band : 12kD

Background : The protein encoded by this gene is a member of the immunoglobulin binding factor family. It is synthesized by the epithelial cells of the prostate gland and secreted into the seminal plasma. This protein has inhibin-like activity. It may have a role as an autocrine paracrine factor in uterine, breast and other female reproductive tissues. The expression of the encoded protein is found to be decreased in prostate cancer. Two alternatively spliced transcript variants encoding different isoforms are described for this gene. The use of alternate polyadenylation sites has been found for this gene. [provided by RefSeq, Jul 2008],

Function : caution:Was originally thought to inhibit the secretion of FSH by pituitary cells.,disease:A genetic variation in MSMB is associated with susceptibility to hereditary prostate cancer type 13 (HPC13) [MIM:611928].,miscellaneous:Specific receptors for this protein are found on spermatozoa and in the prostate.,similarity:Belongs to the beta-microseminoprotein family.,subcellular location:Sperm surface.,subunit:Interacts with PI16.,tissue specificity:Strongly expressed in prostate, liver, kidney, breast and penis. Also expressed in pancreas, esophagus, stomach, deodenum, colon, trachea, lung, salivary glands and fallopian tube. PSP94 is expressed in lung and breast, whereas PSP57 is found in kidney and bladder.,

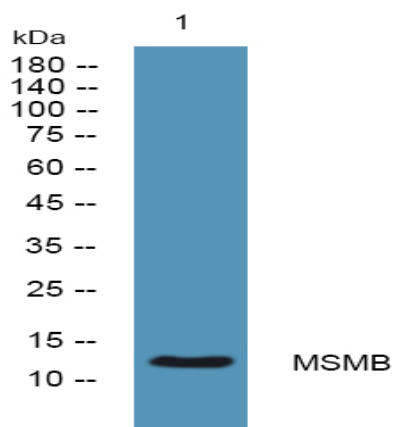
Subcellular Location : Secreted. Sperm surface.

Expression : Strongly expressed in prostate, liver, kidney, breast and penis. Also expressed in pancreas, esophagus, stomach, deodenum, colon, trachea, lung, salivary glands and fallopian tube. PSP94 is expressed in lung and breast, whereas PSP57 is found in kidney and bladder.

Sort : 20199

No4 : 1

Products Images



Western blot analysis of lysates from A431 cells, primary antibody was diluted at 1:1000, 4° over night