

FLI1/ERG (ABT-FLI1) Mouse mAb

Catalog No :	YM6057
Reactivity :	Human
Applications :	WB;IHC;IF;ELISA
Target :	FLI1
Fields :	>>Transcriptional misregulation in cancer
Gene Name :	FLI1
Protein Name :	Friend leukemia integration 1 transcription factor (Proto-oncogene Fli-1) (Transcription factor ERGB)
Human Gene Id :	2313
Human Swiss Prot No :	Q01543
Immunogen :	Synthesized peptide derived from human FLI1 AA range: 300-400
Specificity :	This antibody detects endogenous levels of human FLI1. Heat-induced epitope retrieval (HIER) TRIS-EDTA of pH8.0 was highly recommended as antigen repair method in paraffin section
Formulation :	Liquid in PBS containing 50% glycerol, 0.5% BSA and 0.02% sodium azide.
Source :	Mouse, Monoclonal/IgG1, Kappa
Dilution :	IHC 1:200-400, WB 1:100-2000, IF 1:50-200, ELISA 1:5000-20000
Purification :	The antibody was affinity-purified from mouse ascites by affinity-chromatography using specific immunogen.
Storage Stability :	-15°C to -25°C/1 year(Do not lower than -25°C)
Molecularweight :	51kD

Background :

This gene encodes a transcription factor containing an ETS DNA-binding domain. The gene can undergo a t(11;22)(q24;q12) translocation with the Ewing sarcoma gene on chromosome 22, which results in a fusion gene that is present in the majority of Ewing sarcoma cases. An acute lymphoblastic leukemia-associated t(4;11)(q21;q23) translocation involving this gene has also been identified. Alternative splicing results in multiple transcript variants. [provided by RefSeq, Aug 2012],

Function :

disease:A chromosomal aberration involving FLI1 is a cause of Ewing sarcoma [MIM:133450]. Translocation t(11;22)(q24;q12) with EWS.,function:Sequence-specific transcriptional activator. Recognizes the DNA sequence 5'-C[CA]GGAAGT-3'.,miscellaneous:Located on a fragment of chromosome 11 flanked on the centromeric side by the acute lymphoblastic leukemia-associated t(4;11)(q21;q23) translocation breakpoint and on the telomeric side by the Ewing- and neuroepithelioma-associated t(11;22) (q24;q12) breakpoint.,similarity:Belongs to the ETS family.,similarity:Contains 1 ETS DNA-binding domain.,similarity:Contains 1 PNT (pointed) domain.,subunit:Can form homodimers or heterodimers with ETV6/TEL1.,

Subcellular Location :

Nucleus .

Expression :

Blood,Bone marrow,Lymph,Placenta,

Sort :

6162

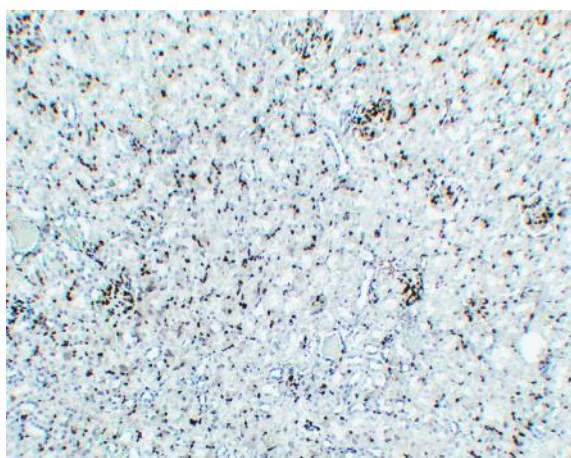
Host :

Mouse

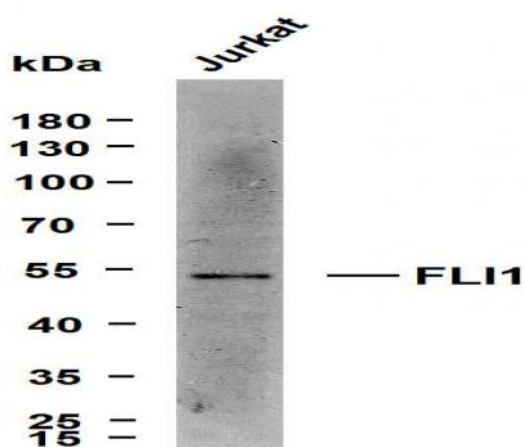
Modifications :

Unmodified

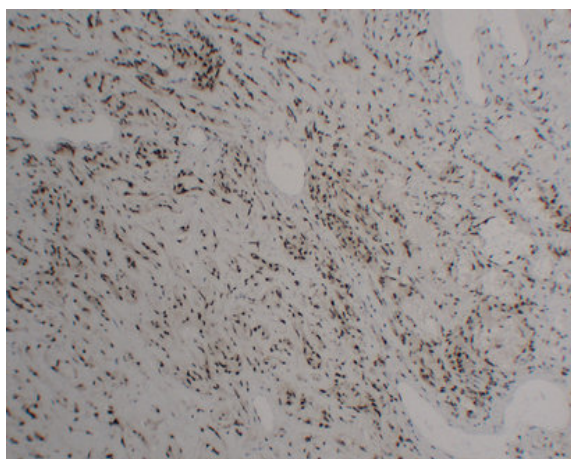
Products Images



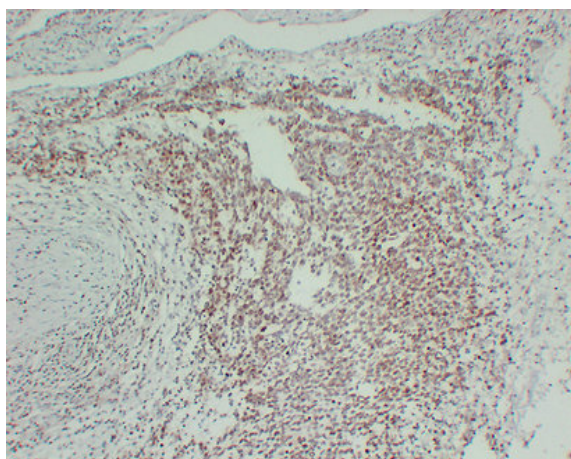
Mouse kidney tissue was stained with Anti-FLI1/ERG (ABT-FLI1) Antibody



Whole cell lysates were separated by 10% SDS-PAGE, and the membrane was blotted with anti-FLI1/ERG (ABT-FLI1) antibody. The HRP-conjugated Goat anti-Mouse IgG(H + L) antibody was used to detect the antibody. Lane 1: Jurkat Predicted band size: 51kDa Observed band size: 51kDa



Immunohistochemical analysis of paraffin-embedded Hemangioendothelioma. 1, Antibody was diluted at 1:200(4° overnight). 2, Tris-EDTA,pH8.0 was used for antigen retrieval. 3,Secondary antibody was diluted at 1:200(room temperature, 30min).



Immunohistochemical analysis of paraffin-embedded PNET. 1, Antibody was diluted at 1:200(4° overnight). 2, Tris-EDTA,pH8.0 was used for antigen retrieval. 3,Secondary antibody was diluted at 1:200(room temperature, 30min).