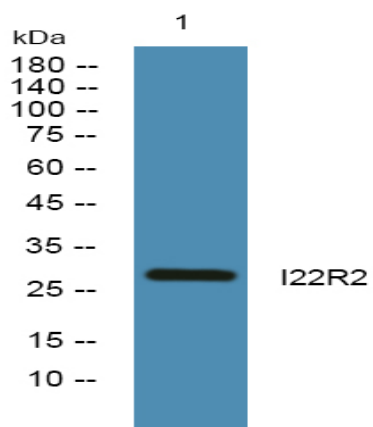


I22R2 Polyclonal Antibody

Catalog No :	YN1757
Reactivity :	Human;Rat;Mouse;
Applications :	WB;ELISA
Target :	I22R2
Fields :	>>JAK-STAT signaling pathway
Gene Name :	IL22RA2 UNQ5793/PRO19598/PRO19822
Protein Name :	Interleukin-22 receptor subunit alpha-2 (IL-22 receptor subunit alpha-2) (IL-22R-alpha-2) (IL-22RA2) (Cytokine receptor class-II member 10) (Cytokine receptor family 2 member 10) (CRF2-10) (Cytokine r
Human Gene Id :	116379
Human Swiss Prot No :	Q969J5
Mouse Swiss Prot No :	Q80XF5
Rat Swiss Prot No :	Q7TNI4
Immunogen :	Synthesized peptide derived from part region of human protein
Specificity :	I22R2 Polyclonal Antibody detects endogenous levels of protein.
Formulation :	Liquid in PBS containing 50% glycerol, and 0.02% sodium azide.
Source :	Polyclonal, Rabbit,IgG
Dilution :	WB 1:500-2000 ELISA 1:5000-20000
Purification :	The antibody was affinity-purified from rabbit antiserum by affinity-chromatography using epitope-specific immunogen.
Concentration :	1 mg/ml

Storage Stability :	-15°C to -25°C/1 year(Do not lower than -25°C)
Observed Band :	28kD
Cell Pathway :	Cytokine-cytokine receptor interaction;Jak_STAT;
Background :	<p>This gene encodes a member of the class II cytokine receptor family. The encoded soluble protein specifically binds to and inhibits interleukin 22 activity by blocking the interaction of interleukin 22 with its cell surface receptor. The encoded protein may be important in the regulation of inflammatory response, and has been implicated in the regulation of tumorigenesis in the colon. Alternative splicing results in multiple transcript variants encoding distinct isoforms. [provided by RefSeq, Jul 2013],</p>
Function :	<p>function:Isoform 2 is a receptor for IL22. Binds to IL22, prevents interaction with the functional IL-22R complex and blocks the activity of IL22 (in vitro). May play an important role as an IL22 antagonist in the regulation of inflammatory responses. Isoform 1 may play a role in establishing and maintaining successful pregnancy.,similarity:Belongs to the type II cytokine receptor family.,similarity:Contains 3 fibronectin type-III domains.,tissue specificity:Expressed in placenta, spleen, breast, skin and lung. Also detected in intestinal tract, testis, brain, heart and thymus. No expression found in prostate, bladder, kidney, ovary, muscle, bone marrow, liver and uterus. Isoform 1 is expressed only in placenta. Isoform 2 is expressed in placenta and breast and at lower level in spleen, skin, thymus and stomach.,</p>
Subcellular Location :	Secreted .
Expression :	<p>Expressed in placenta, spleen, breast, skin and lung. Also detected in intestinal tract, testis, brain, heart and thymus. No expression found in prostate, bladder, kidney, ovary, muscle, bone marrow, liver and uterus. Isoform 1 is expressed only in placenta. Isoform 2 is expressed in placenta and breast and at lower level in spleen, skin, thymus and stomach.</p>
Sort :	19538
No4 :	1
Host :	Rabbit
Modifications :	Unmodified

Products Images



Western blot analysis of lysates from PC12 cells, primary antibody was diluted at 1:1000, 4° over night