

BOB.1 (ABT-BOB1) IHC kit

Catalog No :	IHCM6111
Reactivity :	Human;Mouse;
Applications :	IHC
Target :	BOB.1
Gene Name :	POU2AF1 OBF1
Protein Name :	POU domain class 2-associating factor 1 (B-cell-specific coactivator OBF-1) (BOB-1) (OCA-B) (OCT-binding factor 1)
Human Gene Id :	5450
Human Swiss Prot No :	Q16633
Immunogen :	Synthesized peptide derived from human BOB.1 AA range: 150-256
Specificity :	The antibody can specifically recognize human BOB.1 protein.
Source :	Mouse, Monoclonal/IgG2a, kappa
Purification :	The antibody was affinity-purified from ascites by affinity-chromatography using specific immunogen.
Storage Stability :	2°C to 8°C/1 year
Background :	disease:A chromosomal aberration involving POU2AF1/OBF1 may be a cause of a form of B-cell leukemia. Translocation t(3;11)(q27;q23) with BCL6.,function:Transcriptional coactivator that specifically associates with either OCT1 or OCT2. It boosts the OCT1 mediated promoter activity and to a lesser extent, that of OCT2. It has no intrinsic DNA-binding activity. It recognizes the POU domains of OCT1 and OCT2. It is essential for the response of B-cells to antigens and required for the formation of germinal centers.,PTM:Ubiquitinated; mediated by SIAH1 or SIAH2 and leading to its subsequent proteasomal degradation.,similarity:Belongs to the POU2AF1 family.,tissue specificity:B-cell specific.,

Function : disease:A chromosomal aberration involving POU2AF1/OBF1 may be a cause of a form of B-cell leukemia. Translocation t(3;11)(q27;q23) with BCL6.,function:Transcriptional coactivator that specifically associates with either OCT1 or OCT2. It boosts the OCT1 mediated promoter activity and to a lesser extent, that of OCT2. It has no intrinsic DNA-binding activity. It recognizes the POU domains of OCT1 and OCT2. It is essential for the response of B-cells to antigens and required for the formation of germinal centers.,PTM:Ubiquitinated; mediated by SIAH1 or SIAH2 and leading to its subsequent proteasomal degradation.,similarity:Belongs to the POU2AF1 family.,tissue specificity:B-cell specific.,

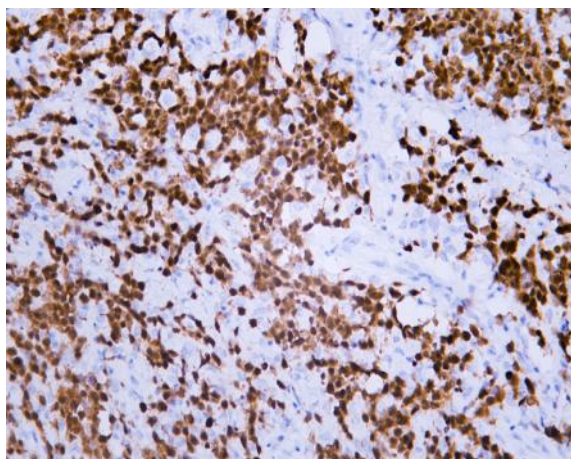
Subcellular Location : Nuclear, Cytoplasmic

Expression : B-cell specific (PubMed:7779176, PubMed:7859290). Detected in mainly in spleen, but also in thymus, peripheral blood leukocyte and small intestine (PubMed:7779176, PubMed:7859290).

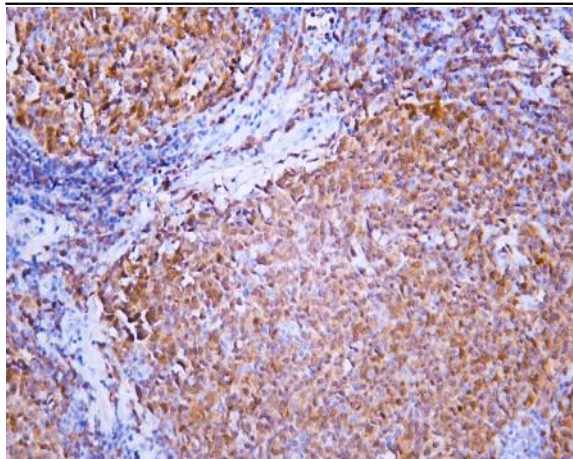
Tag : hot

Sort : 800

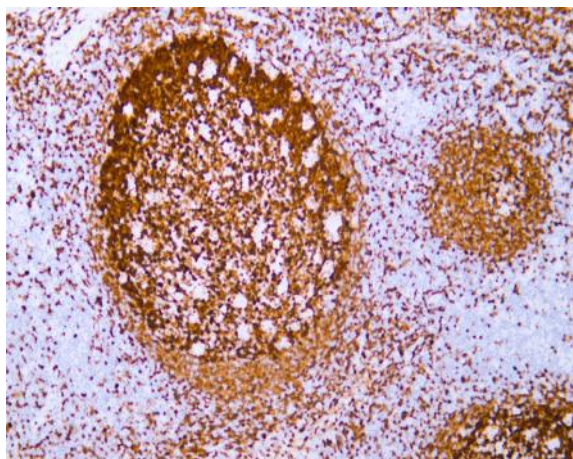
Products Images



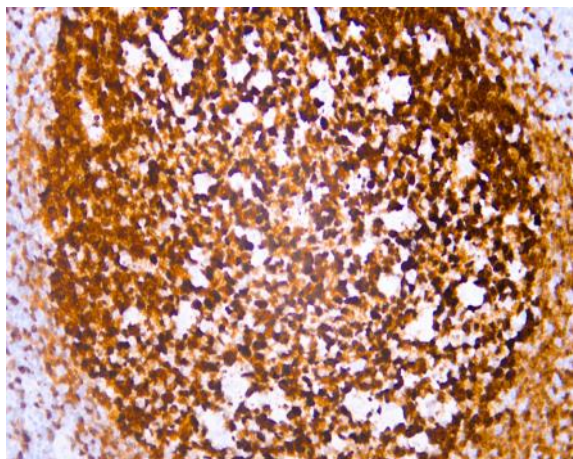
Human diffuse large B-cell lymphoma tissue was stained with anti-BOB.1(ABT-BOB1) antibody.



Human follicular lymphoma tissue was stained with anti-BOB.1(ABT-BOB1) antibody.



Human tonsil tissue was stained with anti-BOB.1(ABT-BOB1) antibody.



Human tonsil tissue was stained with anti-BOB.1(ABT-BOB1) antibody.