

TRAP (ABT239) IHC kit

Catalog No :	IHCM6106
Reactivity :	Human;
Applications :	IHC
Target :	TRAP
Fields :	>>Riboflavin metabolism;>>Metabolic pathways;>>Lysosome;>>Osteoclast differentiation;>>Rheumatoid arthritis
Gene Name :	ACP5
Protein Name :	Type 5 acid phosphatase;Acid phosphatase 5 tartrate resistant;Acid phosphatase 5, tartrate resistant;ACP5;EC 3.1.3.2;MGC117378;PPA5_HUMAN;serum band 5 tartrate-resistant acid phosphatase;SPENCDI;T5ap;
Human Swiss Prot No :	P13686
Mouse Swiss Prot No :	Q05117
Rat Swiss Prot No :	P29288
Immunogen :	Synthesized peptide derived from human TRAP AA range: 250-325
Specificity :	The antibody can specifically recognize human TRAP protein.
Source :	Mouse, Monoclonal/IgG2a, kappa
Purification :	The antibody was affinity-purified from ascites by affinity-chromatography using specific immunogen.
Storage Stability :	2°C to 8°C/1 year
Background :	This gene encodes an iron containing glycoprotein which catalyzes the conversion of orthophosphoric monoester to alcohol and orthophosphate. It is the most basic of the acid phosphatases and is the only form not inhibited by L(+)-tartrate. [provided by RefSeq, Aug 2008],

Function : catalytic activity:A phosphate monoester + H(2)O = an alcohol + phosphate.,cofactor:Binds 2 iron ions per subunit.,disease:This relatively minor intracellular isozyme of acid phosphatase can become the dominant isozyme in certain pathological states (Gaucher and Hodgkin diseases, the hairy cell, the B-cell, and the T-cell leukemias).,similarity:Belongs to the metallophosphoesterase superfamily. Purple acid phosphatase family.,subunit:Exists either as monomer or, after proteolytic processing, as a dimer of two chains linked by disulfide bond(s).,

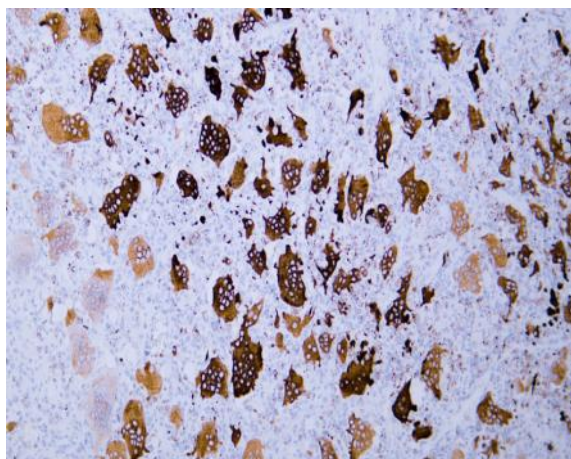
Subcellular Location : Cytoplasmic

Expression : Lung

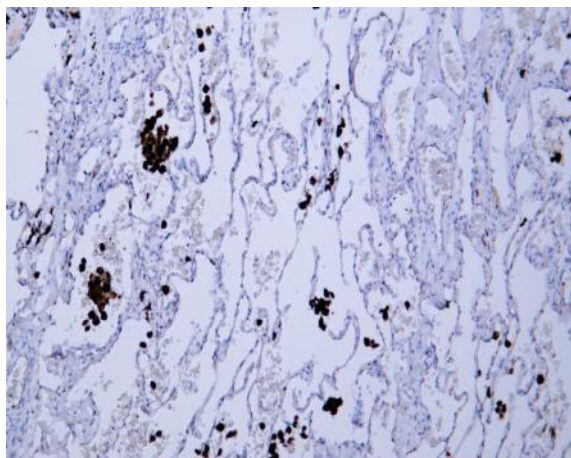
Tag : hot

Sort : 999

Products Images



Human giant cell tumor tissue was stained with Anti-TRAP (ABT239) Antibody



Human lung tissue was stained with Anti-TRAP (ABT239) Antibody