

## Synaptophysin (ABT533) IHC kit

<b>Catalog No :</b>	IHCM6105
<b>Reactivity :</b>	Human;Mouse;Rat;Bovin;
<b>Applications :</b>	IHC
<b>Target :</b>	Synaptophysin
<b>Gene Name :</b>	SYP
<b>Protein Name :</b>	Major synaptic vesicle protein p38;MRX96;MRXSYP;Syn p38;Synaptophysin;Syp;SYPH;SYPH_HUMAN;SypI
<b>Human Swiss Prot No :</b>	P08247
<b>Mouse Swiss Prot No :</b>	Q62277
<b>Rat Swiss Prot No :</b>	P07825
<b>Immunogen :</b>	Synthesized peptide derived from human Synaptophysin AA range: 200-313
<b>Specificity :</b>	The antibody can specifically recognize human Synaptophysin protein.
<b>Source :</b>	Mouse, Monoclonal/IgG1, kappa
<b>Purification :</b>	The antibody was affinity-purified from ascites by affinity-chromatography using specific immunogen.
<b>Storage Stability :</b>	2°C to 8°C/1 year
<b>Background :</b>	This gene encodes an integral membrane protein of small synaptic vesicles in brain and endocrine cells. The protein also binds cholesterol and is thought to direct targeting of vesicle-associated membrane protein 2 (synaptobrevin) to intracellular compartments. Mutations in this gene are associated with X-linked mental retardation (XLMR). [provided by RefSeq, Aug 2011],
<b>Function :</b>	domain:The calcium-binding activity is thought to be localized in the cytoplasmic tail of the protein.,function:Possibly involved in structural functions as organizing other membrane components or in targeting the vesicles to the plasma

membrane.,online information:Synaptophysin entry,PTM:Ubiquitinated; mediated by SIAH1 or SIAH2 and leading to its subsequent proteasomal degradation.,similarity:Belongs to the synaptophysin/synaptobrevin family.,similarity:Contains 1 MARVEL domain.,subunit:Homohexamer or homotetramer.,tissue specificity:Characteristic of a type of small (30-80 nm) neurosecretory vesicles, including presynaptic vesicles, but also vesicles of various neuroendocrine cells of both neuronal and epithelial phenotype.,

**Subcellular**
**Location :**

Cytoplasmic

**Expression :**

Pancreas/ Colon

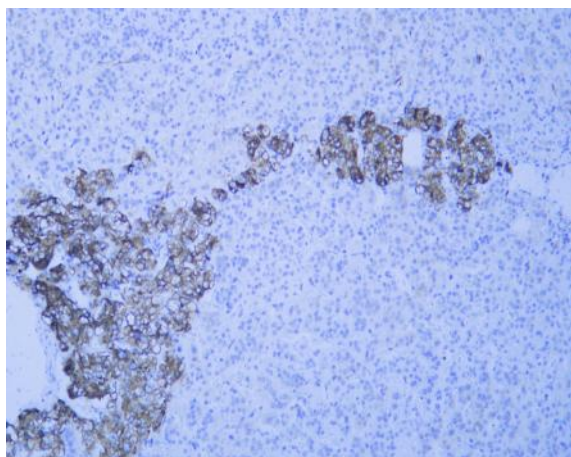
**Tag :**

hot

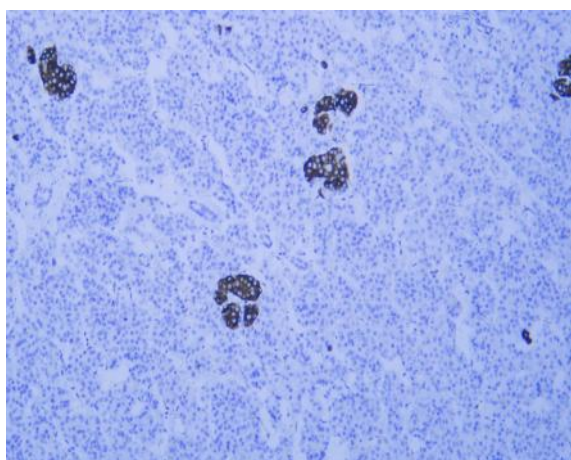
**Sort :**

999

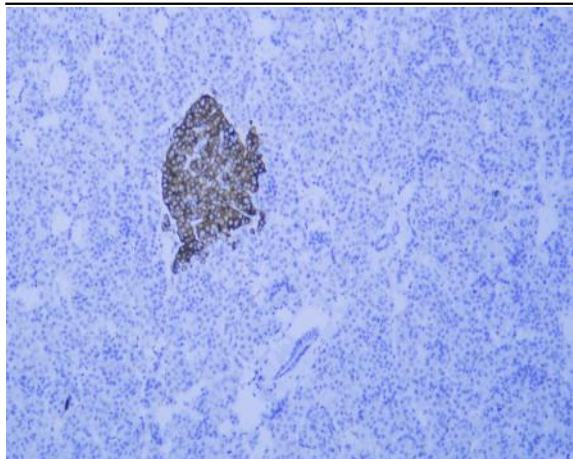
## Products Images



Human adrenal gland tissue was stained with Anti-Synaptophysin (ABT533) Antibody



Human pancreas tissue was stained with Anti-Synaptophysin (ABT533) Antibody



Human pancreas tissue was stained with Anti-Synaptophysin (ABT533) Antibody