

PSA (ABT-PSA) IHC kit

Catalog No :	IHCM6091
Reactivity :	Human;
Applications :	IHC
Target :	PSA
Fields :	>>Pathways in cancer;>>Prostate cancer
Gene Name :	KLK3 APS
Protein Name :	Prostate-specific antigen (PSA) (EC 3.4.21.77) (Gamma-seminoprotein) (Seminin) (Kallikrein-3) (P-30 antigen) (Semenogelase)
Human Gene Id :	354
Human Swiss Prot No :	P07288
Immunogen :	Synthesized peptide derived from human Prostate-Specific Antigen(PSA) AA range: 100-200
Specificity :	The antibody can specifically recognize human PSA protein.
Source :	Mouse, Monoclonal/IgG1, kappa
Purification :	The antibody was affinity-purified from ascites by affinity-chromatography using specific immunogen.
Storage Stability :	2°C to 8°C/1 year
Cell Pathway :	Pathways in cancer;Prostate cancer;
Background :	Kallikreins are a subgroup of serine proteases having diverse physiological functions. Growing evidence suggests that many kallikreins are implicated in carcinogenesis and some have potential as novel cancer and other disease biomarkers. This gene is one of the fifteen kallikrein subfamily members located in a cluster on chromosome 19. Its protein product is a protease present in seminal plasma. It is thought to function normally in the liquefaction of seminal coagulum,

presumably by hydrolysis of the high molecular mass seminal vesicle protein. Serum level of this protein, called PSA in the clinical setting, is useful in the diagnosis and monitoring of prostatic carcinoma. Alternate splicing of this gene generates several transcript variants encoding different isoforms. [provided by RefSeq, Jul 2008],

Function :

catalytic activity:Preferential cleavage: -Tyr-|-Xaa-.,function:Hydrolyzes semenogelin-1 thus leading to the liquefaction of the seminal coagulum.,online information:Prostate-specific antigen entry,similarity:Belongs to the peptidase S1 family.,similarity:Belongs to the peptidase S1 family. Kallikrein subfamily.,similarity:Contains 1 peptidase S1 domain.,

Subcellular Location :

Cytoplasmic

Expression :

Leukocyte,PNS,Prostate,

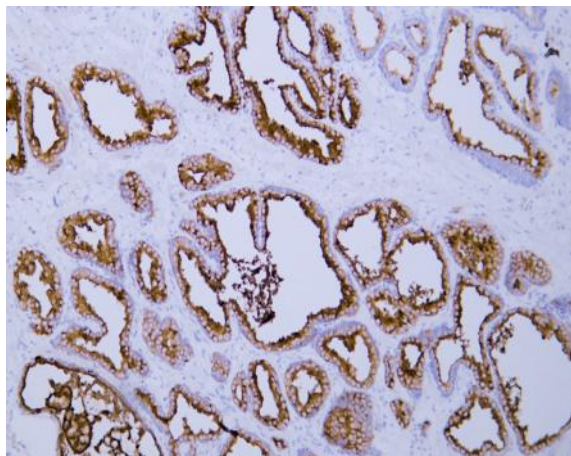
Tag :

hot

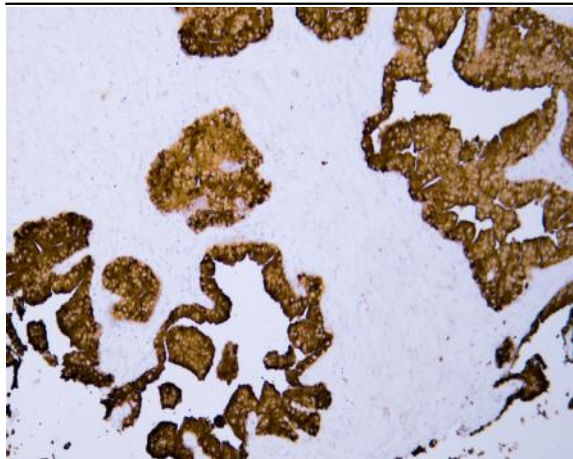
Sort :

13051

Products Images



Human prostate tissue was stained with Anti-Prostate-Specific Antigen (ABT-PSA) Antibody



Human prostatic adenocarcinoma tissue was stained with Anti-Prostate-Specific Antigen (ABT-PSA) Antibody