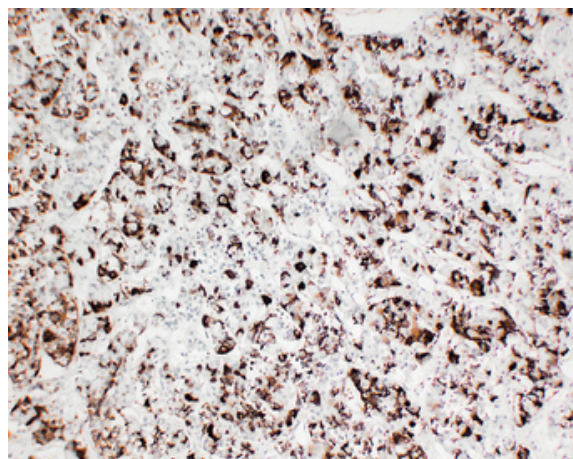


Prolactin (ABT-PRL) IHC kit

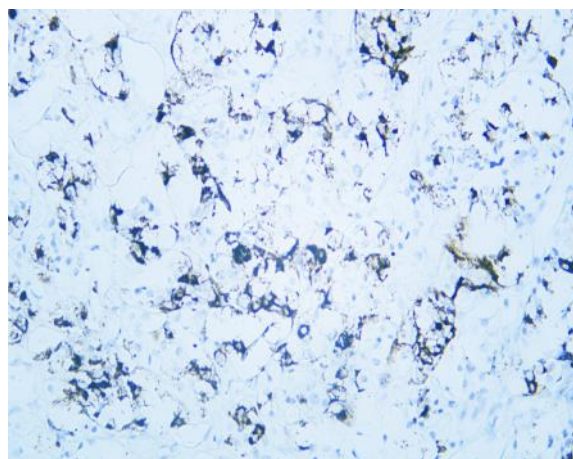
Catalog No :	IHCM6089
Reactivity :	Human;
Applications :	IHC
Target :	Prolactin
Fields :	>>Cytokine-cytokine receptor interaction;>>Neuroactive ligand-receptor interaction;>>PI3K-Akt signaling pathway;>>JAK-STAT signaling pathway;>>Prolactin signaling pathway
Gene Name :	PRL
Protein Name :	Prolactin (PRL)
Human Gene Id :	5617
Human Swiss Prot No :	P01236
Immunogen :	Synthesized peptide derived from human Prolactin AA range: 100-227
Specificity :	The antibody can specifically recognize human Prolactin protein.
Source :	Mouse, Monoclonal/IgG1, kappa
Purification :	The antibody was affinity-purified from ascites by affinity-chromatography using specific immunogen.
Storage Stability :	2°C to 8°C/1 year
Cell Pathway :	Cytokine-cytokine receptor interaction;Neuroactive ligand-receptor interaction;Jak_STAT;
Background :	This gene encodes the anterior pituitary hormone prolactin. This secreted hormone is a growth regulator for many tissues, including cells of the immune system. It may also play a role in cell survival by suppressing apoptosis, and it is essential for lactation. Alternative splicing results in multiple transcript variants that encode the same protein. [provided by RefSeq, Aug 2011],

Function :	function:Prolactin acts primarily on the mammary gland by promoting lactation.,online information:Prolactin entry,similarity:Belongs to the somatotropin/prolactin family.,
Subcellular Location :	Cytoplasmic
Expression :	Mammary gland,Pituitary,Testis,
Tag :	hot
Sort :	13039

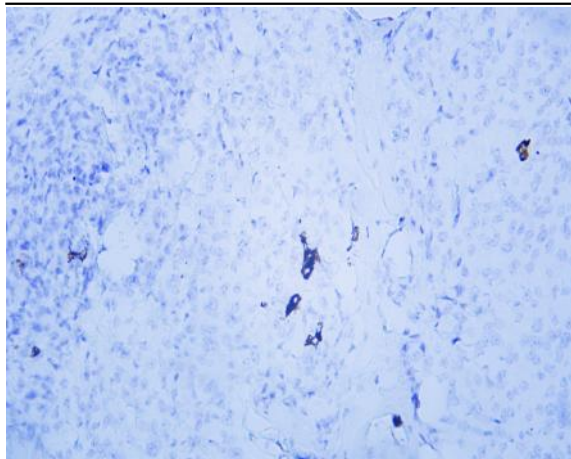
Products Images



Human pituitary adenoma tissue was stained with Anti-Prolactin (ABT-PRL) Antibody



Human pituitary adenoma tissue was stained with Anti-Prolactin (ABT-PRL) Antibody



Human pituitary adenoma tissue was stained with Anti-Prolactin (ABT-PRL) Antibody