

## Gastrin (ABT-GAST) IHC kit

<b>Catalog No :</b>	IHCM6060
<b>Reactivity :</b>	Human;
<b>Applications :</b>	IHC
<b>Target :</b>	Gastrin
<b>Fields :</b>	>>Gastric acid secretion
<b>Gene Name :</b>	GAST GAS
<b>Protein Name :</b>	Gastrin [Cleaved into: Gastrin-71 (Gastrin component I); Gastrin-52 (G52); Big gastrin (Gastrin component II) (Gastrin-34) (G34); Gastrin (Gastrin component III) (Gastrin-17) (G17); Gastrin-14 (G14);
<b>Human Gene Id :</b>	2520
<b>Human Swiss Prot No :</b>	P01350
<b>Immunogen :</b>	Synthesized peptide derived from human Gastrin AA range: 50-101
<b>Specificity :</b>	The antibody can specifically recognize human Gastrin protein.
<b>Source :</b>	Mouse, Monoclonal/IgG3, kappa
<b>Purification :</b>	The antibody was affinity-purified from ascites by affinity-chromatography using specific immunogen.
<b>Storage Stability :</b>	2°C to 8°C/1 year
<b>Background :</b>	Gastrin is a hormone whose main function is to stimulate secretion of hydrochloric acid by the gastric mucosa, which results in gastrin formation inhibition. This hormone also acts as a mitogenic factor for gastrointestinal epithelial cells. Gastrin has two biologically active peptide forms, G34 and G17. [provided by RefSeq, Jul 2008],
<b>Function :</b>	function:Gastrin stimulates the stomach mucosa to produce and secrete hydrochloric acid and the pancreas to secrete its digestive enzymes. It also

stimulates smooth muscle contraction and increases blood circulation and water secretion in the stomach and intestine.,online information:Gastrin entry,PTM:Sulfation enhances proteolytic processing, and blocks peptide degradation. Levels of sulfation differ between proteolytically-cleaved gastrins. Thus, gastrin-6 is almost 73% sulfated, whereas the larger gastrins are less than 50% sulfated. Sulfation levels are also tissue-specific.,PTM:Two different processing pathways probably exist in antral G-cells. In the dominant pathway progastrin is cleaved at three sites resulting in two major bioactive gastrins, gastrin-34 and gastrin-17. In the putative alternative pathway, progastrin may be processed only at the most C-terminal dibasic site resul

**Subcellular**
**Location :**

Cytoplasmic

**Expression :**

Gastric mucosa,

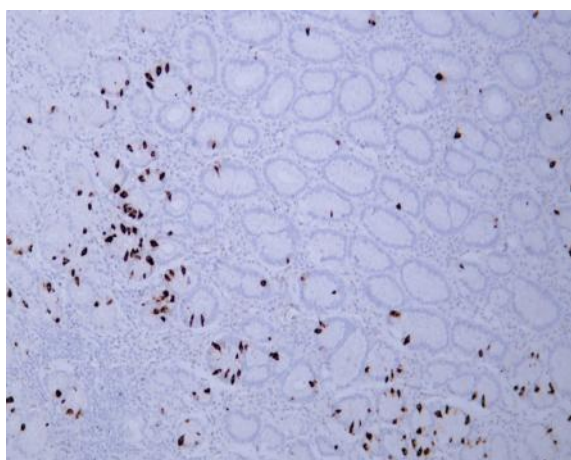
**Tag :**

hot

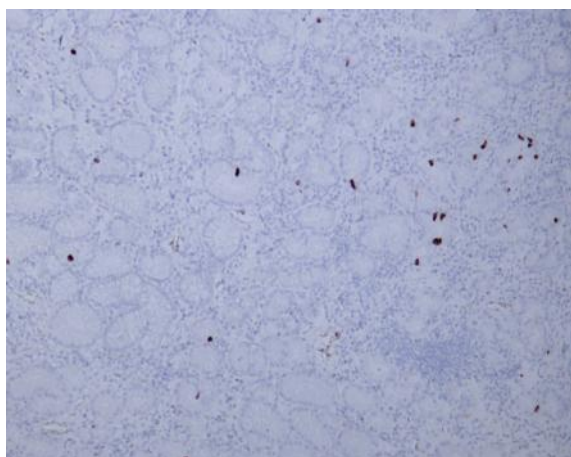
**Sort :**

6465

## Products Images



Human gastric adenocarcinoma tissue was stained with Anti-Gastrin (ABT-GAST) Antibody



Human gastric adenocarcinoma tissue was stained with Anti-Gastrin (ABT-GAST) Antibody