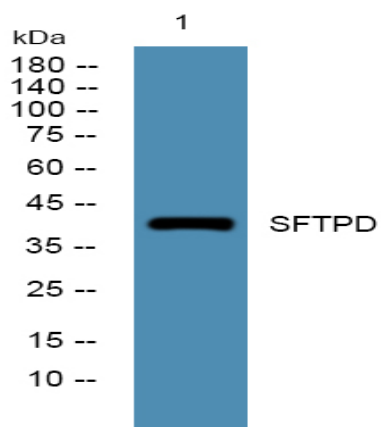


SFTPD Polyclonal Antibody

Catalog No :	YN1126
Reactivity :	Human;Mouse;Rat
Applications :	WB;ELISA
Target :	SFTPD
Fields :	>>Phagosome
Gene Name :	SFTPD COLEC7 PSPD SFTP4
Protein Name :	Pulmonary surfactant-associated protein D (PSP-D) (SP-D) (Collectin-7) (Lung surfactant protein D)
Human Gene Id :	6441
Human Swiss Prot No :	P35247
Mouse Swiss Prot No :	P50404
Rat Swiss Prot No :	P35248
Immunogen :	Synthesized peptide derived from human protein . at AA range: 290-370
Specificity :	SFTPD Polyclonal Antibody detects endogenous levels of protein.
Formulation :	Liquid in PBS containing 50% glycerol, and 0.02% sodium azide.
Source :	Polyclonal, Rabbit,IgG
Dilution :	WB 1:500-2000 ELISA 1:5000-20000
Purification :	The antibody was affinity-purified from rabbit antiserum by affinity-chromatography using epitope-specific immunogen.
Concentration :	1 mg/ml

Storage Stability :	-15 °C to -25 °C/1 year(Do not lower than -25 °C)
Observed Band :	41kD
Background :	The protein encoded by this gene is part of the innate immune response, protecting the lungs against inhaled microorganisms and chemicals. The encoded protein may also be involved in surfactant metabolism. [provided by RefSeq, Jul 2015],
Function :	function:Contributes to the lung's defense against inhaled microorganisms. May participate in the extracellular reorganization or turnover of pulmonary surfactant. Binds strongly maltose residues and to a lesser extent other alpha-glucosyl moieties.,miscellaneous:Pulmonary surfactant consists of 90% lipid and 10% protein. There are 4 surfactant-associated proteins: 2 collagenous, carbohydrate-binding glycoproteins (SP-A and SP-D) and 2 small hydrophobic proteins (SP-B and SP-C).,online information:Pulmonary surfactant protein SP-D,PTM:Hydroxylation on proline residues within the sequence motif, GXPG, is most likely to be 4-hydroxy as this fits the requirement for 4-hydroxylation in vertebrates.,PTM:The N-terminus is blocked.,similarity:Belongs to the SFTPD family.,similarity:Contains 1 C-type lectin domain.,similarity:Contains 1 collagen-like domain.,subunit:Oligomeric complex of 4 set o
Subcellular Location :	Secreted, extracellular space, extracellular matrix. Secreted, extracellular space, surface film.
Expression :	Expressed in lung, brain, pancreas and adipose tissue (mainly mature adipocytes).
Sort :	21630
No4 :	1

Products Images



Western blot analysis of lysates from Jurkat cells, primary antibody was diluted at 1:1000, 4° over night