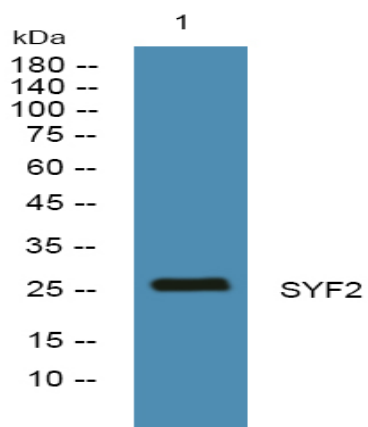


SYF2 Polyclonal Antibody

Catalog No :	YN1101
Reactivity :	Human;Mouse;Rat
Applications :	WB;ELISA
Target :	SYF2
Fields :	>>Spliceosome
Gene Name :	SYF2 CBPIN GCIP
Protein Name :	Pre-mRNA-splicing factor SYF2 (CCNDBP1-interactor) (p29)
Human Gene Id :	25949
Human Swiss Prot No :	O95926
Mouse Swiss Prot No :	Q9D198
Rat Swiss Prot No :	Q4QRB2
Immunogen :	Synthesized peptide derived from human protein . at AA range: 160-240
Specificity :	SYF2 Polyclonal Antibody detects endogenous levels of protein.
Formulation :	Liquid in PBS containing 50% glycerol, and 0.02% sodium azide.
Source :	Polyclonal, Rabbit,IgG
Dilution :	WB 1:500-2000 ELISA 1:5000-20000
Purification :	The antibody was affinity-purified from rabbit antiserum by affinity-chromatography using epitope-specific immunogen.
Concentration :	1 mg/ml

Storage Stability :	-15 °C to -25 °C/1 year(Do not lower than -25 °C)
Observed Band :	26kD
Cell Pathway :	Spliceosome;
Background :	This gene encodes a nuclear protein that interacts with cyclin D-type binding-protein 1, which is thought to be a cell cycle regulator at the G1/S transition. Alternate transcriptional splice variants, encoding different isoforms, have been characterized. [provided by RefSeq, Jul 2008],
Function :	function:May be involved in pre-mRNA splicing.,similarity:Belongs to the SYF2 family.,subunit:Identified in the spliceosome C complex, at least composed of AQR, ASCC3L1, C19orf29, CDC40, CDC5L, CRNKL1, DDX23, DDX41, DDX48, DDX5, DGCR14, DHX35, DHX38, DHX8, EFTUD2, FRG1, GPATC1, HNRPA1, HNRPA2B1, HNRPA3, HNRPC, HNRPF, HNRPH1, HNRPK, HNRPM, HNRPR, HNRPU, KIAA1160, KIAA1604, LSM2, LSM3, MAGOH, MORG1, PABPC1, PLRG1, PNN, PPIE, PPIL1, PPIL3, PPWD1, PRPF19, PRPF4B, PRPF6, PRPF8, RALY, RBM22, RBM8A, RBMX, SART1, SF3A1, SF3A2, SF3A3, SF3B1, SF3B2, SF3B3, SFRS1, SKIV2L2, SNRPA1, SNRPB, SNRPB2, SNRPD1, SNRPD2, SNRPD3, SNRPE, SNRPF, SNRPG, SNW1, SRRM1, SRRM2, SYF2, SYNCRIP, TFIP11, THOC4, U2AF1, WDR57, XAB2 and ZCCHC8. Interacts with CCNDBP1.,tissue specificity:Abundantly expressed in the heart, skeletal muscle and kidney. Expressed at lower level other tissues.,
Subcellular Location :	Nucleus .
Expression :	Abundantly expressed in the heart, skeletal muscle and kidney. Expressed at lower level other tissues.
Sort :	21957
No4 :	1

Products Images



Western blot analysis of lysates from PC12 cells, primary antibody was diluted at 1:1000, 4° over night