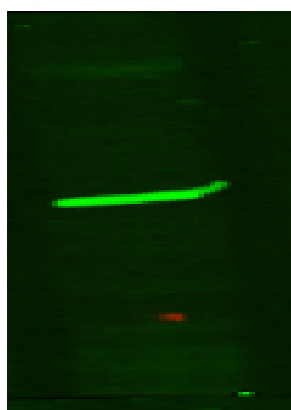


PR38B Polyclonal Antibody

Catalog No :	YN1099
Reactivity :	Human;Rat;Mouse
Applications :	WB;ELISA
Target :	PR38B
Fields :	>>Spliceosome
Gene Name :	PRPF38B
Protein Name :	Pre-mRNA-splicing factor 38B (Sarcoma antigen NY-SAR-27)
Human Gene Id :	55119
Human Swiss Prot No :	Q5VTL8
Mouse Swiss Prot No :	Q80SY5
Rat Swiss Prot No :	Q6AXY7
Immunogen :	Synthesized peptide derived from human protein . at AA range: 180-260
Specificity :	PR38B Polyclonal Antibody detects endogenous levels of protein.
Formulation :	Liquid in PBS containing 50% glycerol, and 0.02% sodium azide.
Source :	Polyclonal, Rabbit,IgG
Dilution :	WB 1:500-2000 ELISA 1:5000-20000
Purification :	The antibody was affinity-purified from rabbit antiserum by affinity-chromatography using epitope-specific immunogen.
Concentration :	1 mg/ml

Storage Stability :	-15°C to -25°C/1 year(Do not lower than -25°C)
Observed Band :	60kD
Cell Pathway :	Spliceosome;
Background :	function:May be required for pre-mRNA splicing .,PTM:Phosphorylated upon DNA damage, probably by ATM or ATR.,similarity:Belongs to the PRP38 family.,
Function :	function:May be required for pre-mRNA splicing .,PTM:Phosphorylated upon DNA damage, probably by ATM or ATR.,similarity:Belongs to the PRP38 family.,
Subcellular Location :	Nucleus .
Expression :	Brain,Epithelium,Lung,Muscle,Skin,Testis,
Sort :	21026
No4 :	1

Products Images



Western Blot analysis of HEK293 lysis, using primary antibody at 1:1000 dilution. Secondary antibody(catalog#:RS23920) was diluted at 1:10000