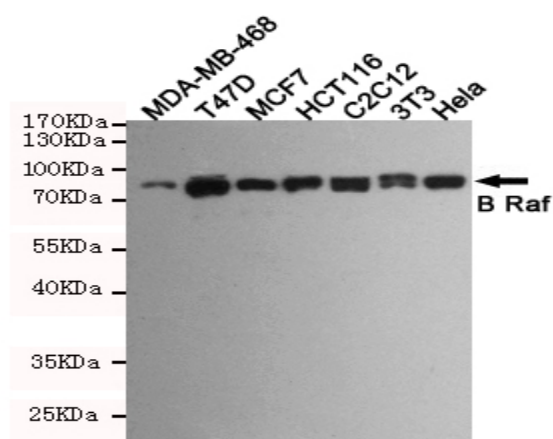


B Raf mouse mAb

Catalog No :	YM1285
Reactivity :	Human;Mouse
Applications :	WB
Target :	Raf-B
Fields :	>>EGFR tyrosine kinase inhibitor resistance;>>Endocrine resistance;>>MAPK signaling pathway;>>ErbB signaling pathway;>>Rap1 signaling pathway;>>cAMP signaling pathway;>>Chemokine signaling pathway;>>FoxO signaling pathway;>>mTOR signaling pathway;>>Vascular smooth muscle contraction;>>Focal adhesion;>>Natural killer cell mediated cytotoxicity;>>Long-term potentiation;>>Neurotrophin signaling pathway;>>Serotonergic synapse;>>Long-term depression;>>Regulation of actin cytoskeleton;>>Insulin signaling pathway;>>Progesterone-mediated oocyte maturation;>>Parathyroid hormone synthesis, secretion and action;>>Cushing syndrome;>>Alzheimer disease;>>Pathways of neurodegeneration - multiple diseases;>>Alcoholism;>>Hepatitis C;>>Hepatitis B;>>Pathways in cancer;>>Proteoglycans in cancer;>>Chemical carcinogenesis - reactive oxygen species;>>Colorectal cancer;>>Renal cell carcinoma;>>Pancreatic cancer;>>Endometrial cancer;>>Glioma;>>Prostate cancer;>>Thyroid cancer;>>Melanoma;>>Bladder cancer;>>Chr
Gene Name :	braf
Human Gene Id :	673
Human Swiss Prot No :	P15056
Mouse Swiss Prot No :	P28028
Immunogen :	Purified recombinant human B Raf protein fragments expressed in E.coli.
Specificity :	This antibody detects endogenous levels of B Raf and does not cross-react with related proteins.
Formulation :	Liquid in PBS containing 50% glycerol, 0.5% BSA and 0.02% sodium azide.
Source :	Monoclonal, Mouse

Dilution :	wb 1:1000
Purification :	The antibody was affinity-purified from mouse ascites by affinity-chromatography using epitope-specific immunogen.
Concentration :	1 mg/ml
Storage Stability :	-15°C to -25°C/1 year(Do not lower than -25°C)
Observed Band :	85kD
Cell Pathway :	MAPK_ERK_Growth;MAPK_G_Protein;ErbB_HER;Chemokine;mTOR;Vascular smooth muscle contraction;Focal adhesion;Natural killer cell mediated cytotoxicity;Long-term potentiation;Neurotrophin;Long-term depress
Background :	This gene encodes a protein belonging to the raf/mil family of serine/threonine protein kinases. This protein plays a role in regulating the MAP kinase/ERKs signaling pathway, which affects cell division, differentiation, and secretion. Mutations in this gene are associated with cardiofaciocutaneous syndrome, a disease characterized by heart defects, mental retardation and a distinctive facial appearance. Mutations in this gene have also been associated with various cancers, including non-Hodgkin lymphoma, colorectal cancer, malignant melanoma, thyroid carcinoma, non-small cell lung carcinoma, and adenocarcinoma of lung. A pseudogene, which is located on chromosome X, has been identified for this gene. [provided by RefSeq, Jul 2008],
Function :	catalytic activity:ATP + a protein = ADP + a phosphoprotein.,cofactor:Binds 2 zinc ions per subunit.,disease:Defects in BRAF are a cause of cardiofaciocutaneous syndrome (CFC syndrome) [MIM:115150]; also known as cardio-facio-cutaneous syndrome. CFC syndrome is characterized by a distinctive facial appearance, heart defects and mental retardation. Heart defects include pulmonic stenosis, atrial septal defects and hypertrophic cardiomyopathy. Some affected individuals present with ectodermal abnormalities such as sparse, friable hair, hyperkeratotic skin lesions and a generalized ichthyosis-like condition. Typical facial features are similar to Noonan syndrome. They include high forehead with bitemporal constriction, hypoplastic supraorbital ridges, downslanting palpebral fissures, a depressed nasal bridge, and posteriorly angulated ears with prominent helices. The inheritance of CFC synd
Subcellular Location :	Nucleus . Cytoplasm . Cell membrane . Colocalizes with RGS14 and RAF1 in both the cytoplasm and membranes. .
Expression :	Brain and testis.
Sort :	2541

Products Images



Western blot detection of B Raf in MDA-MB-468, T47D, MCF7, HCT116, C2C12, 3T3 and HeLa cell lysates using B Raf mouse mAb (1:1000 diluted). Predicted band size: 87 kDa. Observed band size: 87 kDa.