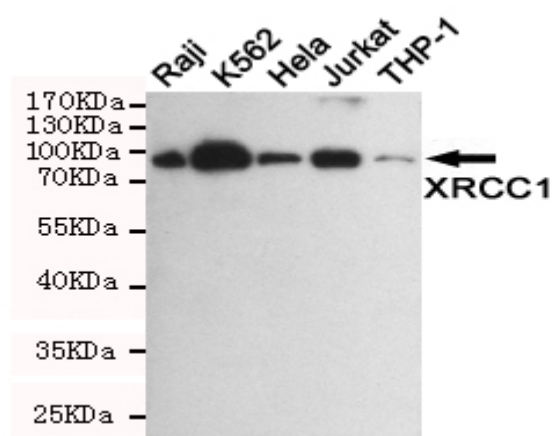


XRCC1 mouse mAb

Catalog No :	YM1417
Reactivity :	Human
Applications :	WB
Target :	XRCC1
Fields :	>>Base excision repair
Gene Name :	xrcc1
Human Gene Id :	7515
Human Swiss Prot No :	P18887
Mouse Swiss Prot No :	Q60596
Immunogen :	Purified recombinant human XRCC1 protein fragments expressed in E.coli.
Specificity :	This antibody detects endogenous levels of XRCC1 and does not cross-react with related proteins.
Formulation :	Liquid in PBS containing 50% glycerol, 0.5% BSA and 0.02% sodium azide.
Source :	Monoclonal, Mouse
Dilution :	wb dilution 1:1000
Purification :	The antibody was affinity-purified from mouse ascites by affinity-chromatography using epitope-specific immunogen.
Concentration :	1 mg/ml
Storage Stability :	-15°C to -25°C/1 year (Do not lower than -25°C)
Observed Band :	82kD

Cell Pathway :	Base excision repair;
Background :	<p>The protein encoded by this gene is involved in the efficient repair of DNA single-strand breaks formed by exposure to ionizing radiation and alkylating agents. This protein interacts with DNA ligase III, polymerase beta and poly (ADP-ribose) polymerase to participate in the base excision repair pathway. It may play a role in DNA processing during meiosis and recombination in germ cells. A rare microsatellite polymorphism in this gene is associated with cancer in patients of varying radiosensitivity. [provided by RefSeq, Jul 2008],</p>
Function :	<p>function:Corrects defective DNA strand-break repair and sister chromatid exchange following treatment with ionizing radiation and alkylating agents.,polymorphism:Carriers of the polymorphic Gln-399 allele may be at greater risk for tobacco- and age-related DNA damage.,PTM:Phosphorylation of Ser-371 causes dimer dissociation. Phosphorylation by CK2 promotes interaction with APTX and APLF.,PTM:Sumoylated.,similarity:Contains 2 BRCT domains.,subcellular location:Accumulates at sites of DNA damage.,subunit:Homodimer. Interacts with polynucleotide kinase (PNK), DNA polymerase-beta (POLB) and DNA ligase III (LIG3). Interacts with APTX and APLF.,</p>
Subcellular Location :	Nucleus . Moves from the nucleoli to the global nuclear chromatin upon DNA damage. .
Expression :	Expressed in fibroblasts, retinal pigmented epithelial cells and lymphoblastoid cells (at protein level).
Sort :	24360
No4 :	1
Host :	Mouse
Modifications :	Unmodified

Products Images



Western blot detection of XRCC1 in Raji, K562, HeLa, Jurkat and THP-1 cell lysates using XRCC1 mouse mAb (1:1000 diluted). Predicted band size: 82 kDa. Observed band size: 82 kDa.