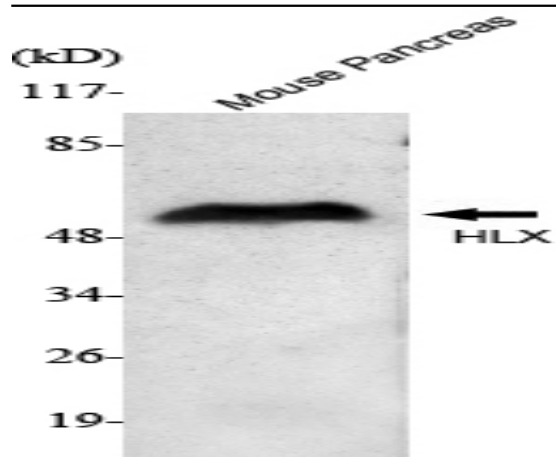


HLX1 Monoclonal Antibody

Catalog No :	YM1043
Reactivity :	Human;Mouse;Rat;Bovine;Dog;Pig
Applications :	WB
Target :	HLX1
Gene Name :	HLX
Protein Name :	H2.0-like homeobox protein
Human Gene Id :	3142
Human Swiss Prot No :	Q14774
Mouse Gene Id :	15284
Mouse Swiss Prot No :	Q61670
Rat Gene Id :	364069
Rat Swiss Prot No :	A0JPN1
Immunogen :	Purified recombinant human HLX1 (C-terminus) protein fragments expressed in E.coli.
Specificity :	HLX1 Monoclonal Antibody detects endogenous levels of HLX1 protein.
Formulation :	Liquid in PBS containing 50% glycerol, 0.5% BSA and 0.02% sodium azide.
Source :	Monoclonal, Mouse
Dilution :	WB 1:1000 - 1:2000. Not yet tested in other applications.
Purification :	Affinity purification

Concentration :	1 mg/ml
Storage Stability :	-15°C to -25°C/1 year(Do not lower than -25°C)
Molecularweight :	51kD
Background :	function:Transcription factor required for TBX21/T-bet-dependent maturation of Th1 cells as well as maintenance of Th1-specific gene expression. Involved in embryogenesis and hematopoiesis.,sequence caution:Translation N-terminally extended.,similarity:Belongs to the H2.0 homeobox family.,similarity:Contains 1 homeobox DNA-binding domain.,tissue specificity:Low level in normal B and T-cells, high level in activated lymphocytes and monocytes. Also found in thymus, tonsil, bone marrow, developing vessels, and fetal brain.,
Function :	function:Transcription factor required for TBX21/T-bet-dependent maturation of Th1 cells as well as maintenance of Th1-specific gene expression. Involved in embryogenesis and hematopoiesis.,sequence caution:Translation N-terminally extended.,similarity:Belongs to the H2.0 homeobox family.,similarity:Contains 1 homeobox DNA-binding domain.,tissue specificity:Low level in normal B and T-cells, high level in activated lymphocytes and monocytes. Also found in thymus, tonsil, bone marrow, developing vessels, and fetal brain.,
Subcellular Location :	Nucleus .
Expression :	Low level in normal B and T-cells, high level in activated lymphocytes and monocytes. Also found in thymus, tonsil, bone marrow, developing vessels, and fetal brain.
Sort :	7681
No4 :	1

Products Images



Western Blot analysis using HLX1 Monoclonal Antibody against Mouse pancreas cell lysate.