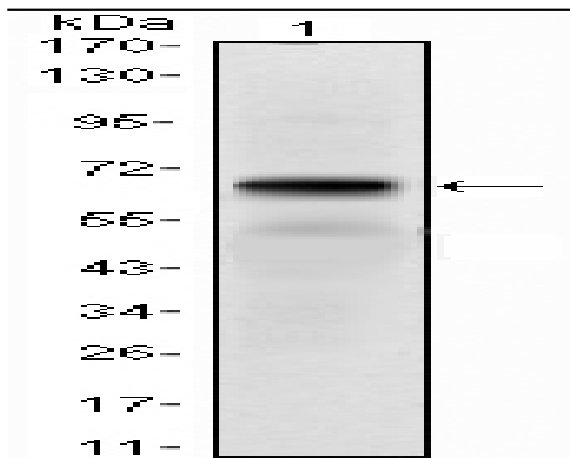


PTH/PTHrP-R Monoclonal Antibody

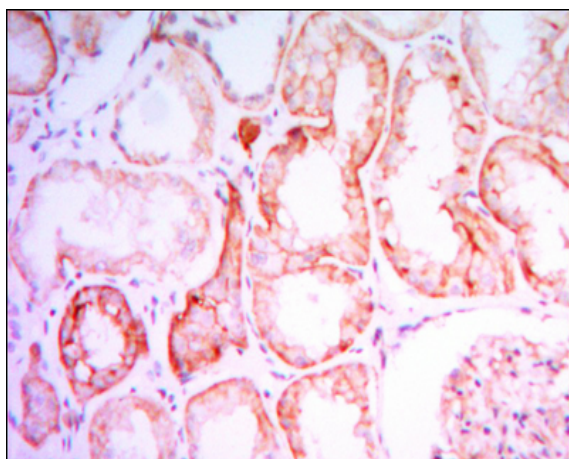
Catalog No :	YM0542
Reactivity :	Human
Applications :	WB;IHC;IF;ELISA
Target :	PTH/PTHrP-R
Fields :	>>Neuroactive ligand-receptor interaction;>>Parathyroid hormone synthesis, secretion and action;>>Endocrine and other factor-regulated calcium reabsorption
Gene Name :	PTH1R
Protein Name :	Parathyroid hormone/parathyroid hormone-related peptide receptor
Human Gene Id :	5745
Human Swiss Prot No :	Q03431
Mouse Swiss Prot No :	P41593
Immunogen :	Purified recombinant fragment of human PTH/PTHrP-R expressed in E. Coli.
Specificity :	PTH/PTHrP-R Monoclonal Antibody detects endogenous levels of PTH/PTHrP-R protein.
Formulation :	Liquid in PBS containing 50% glycerol, 0.5% BSA and 0.02% sodium azide.
Source :	Monoclonal, Mouse
Dilution :	WB 1:500 - 1:2000. IHC 1:200 - 1:1000. IF 1:200 - 1:1000. ELISA: 1:10000. Not yet tested in other applications.
Purification :	Affinity purification
Storage Stability :	-15°C to -25°C/1 year(Do not lower than -25°C)

Molecularweight :	66kD
Cell Pathway :	Neuroactive ligand-receptor interaction;
P References :	1. Int J Cancer. 2007 Sep 1;121(5):943-54. 2. Mol Endocrinol. 2008 Jan;22(1):156-66.
Background :	<p>The protein encoded by this gene is a member of the G-protein coupled receptor family 2. This protein is a receptor for parathyroid hormone (PTH) and for parathyroid hormone-like hormone (PTHrP). The activity of this receptor is mediated by G proteins which activate adenylyl cyclase and also a phosphatidylinositol-calcium second messenger system. Defects in this receptor are known to be the cause of Jansen's metaphyseal chondrodysplasia (JMC), chondrodysplasia Blomstrand type (BOCD), as well as enchondromatosis. Two transcript variants encoding the same protein have been found for this gene. [provided by RefSeq, May 2010],</p>
Function :	<p>disease:Defects in PTH1R are a cause of primary failure of tooth eruption (PFE) [MIM:125350]. PFE is a rare condition that has high penetrance and variable expressivity and in which tooth retention occurs without evidence of any obvious mechanical interference. Instead, malfunction of the eruptive mechanism itself appears to cause nonankylosed permanent teeth to fail to erupt, although the eruption pathway has been cleared by bone resorption.,disease:Defects in PTH1R are the cause of chondrodysplasia Blomstrand type (BOCD) [MIM:215045]. BOCD is a severe skeletal dysplasia.,disease:Defects in PTH1R are the cause of Eiken syndrome [MIM:600002]; also called Eiken skeletal dysplasia or bone modeling defect of hands and feet. Eiken syndrome is a rare familial autosomal recessive skeletal dysplasia. It is characterized by multiple epiphyseal dysplasia, with extremely retarded ossification, pri</p>
Subcellular Location :	Cell membrane ; Multi-pass membrane protein .
Expression :	Expressed in most tissues. Most abundant in kidney, bone and liver.
Sort :	13152
No4 :	1
Host :	Mouse
Modifications :	Unmodified

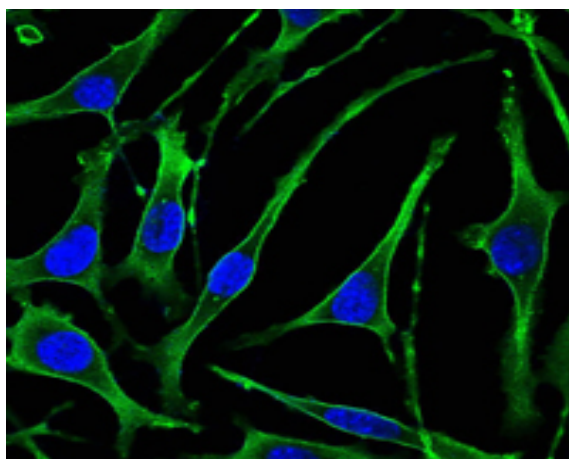
Products Images



Western Blot analysis using PTH/PTHrP-R Monoclonal Antibody against PTH1R-hlgGfc transfected HEK293 cell lysate.



Immunohistochemistry analysis of paraffin-embedded human kidney tissues with DAB staining using PTH/PTHrP-R Monoclonal Antibody.



Immunofluorescence analysis of SK-BR-3 cells using PTH/PTHrP-R Monoclonal Antibody (green). Blue: DRAQ5 fluorescent DNA dye.