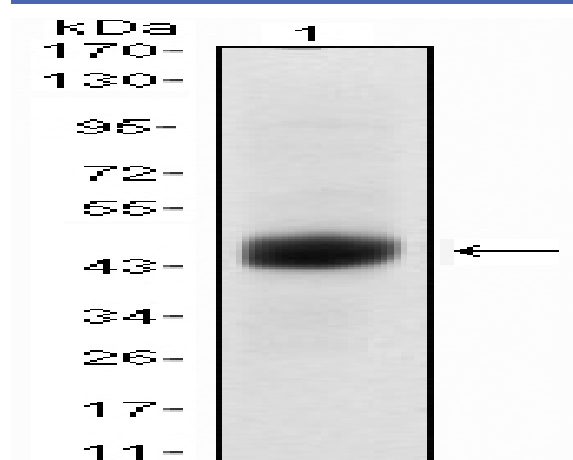


**FoxA2 Monoclonal Antibody**

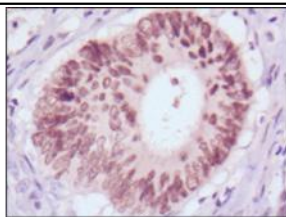
<b>Catalog No :</b>	YM0281
<b>Reactivity :</b>	Human
<b>Applications :</b>	WB;IHC;IF;ELISA
<b>Target :</b>	FoxA2
<b>Fields :</b>	>>Longevity regulating pathway - multiple species;>>Maturity onset diabetes of the young
<b>Gene Name :</b>	FOXA2
<b>Protein Name :</b>	Hepatocyte nuclear factor 3-beta
<b>Human Gene Id :</b>	3170
<b>Human Swiss Prot No :</b>	Q9Y261
<b>Mouse Swiss Prot No :</b>	P35583
<b>Immunogen :</b>	Purified recombinant fragment of FoxA2 expressed in E. Coli.
<b>Specificity :</b>	FoxA2 Monoclonal Antibody detects endogenous levels of FoxA2 protein.
<b>Formulation :</b>	Liquid in PBS containing 50% glycerol, 0.5% BSA and 0.02% sodium azide.
<b>Source :</b>	Monoclonal, Mouse
<b>Dilution :</b>	WB 1:500 - 1:2000. IHC 1:200 - 1:1000. ELISA: 1:10000.. IF 1:50-200
<b>Purification :</b>	Affinity purification
<b>Storage Stability :</b>	-15°C to -25°C/1 year(Do not lower than -25°C)
<b>Molecularweight :</b>	48kD

<b>Cell Pathway :</b>	Stem cell pathway; Protein_Acetylation
<b>P References :</b>	<ol style="list-style-type: none"> <li>1. Hepatology. 2008 Aug;48(2):597-606.</li> <li>2. Cancer Res. 2004 Jun 15;64(12):4137-47.</li> </ol>
<b>Background :</b>	<p>This gene encodes a member of the forkhead class of DNA-binding proteins. These hepatocyte nuclear factors are transcriptional activators for liver-specific genes such as albumin and transthyretin, and they also interact with chromatin. Similar family members in mice have roles in the regulation of metabolism and in the differentiation of the pancreas and liver. This gene has been linked to sporadic cases of maturity-onset diabetes of the young. Transcript variants encoding different isoforms have been identified for this gene. [provided by RefSeq, Oct 2008],</p>
<b>Function :</b>	<p>function:Transcription activator for a number of liver genes such as AFP, albumin, tyrosine aminotransferase, PEPCK, etc. Interacts with the cis-acting regulatory regions of these genes.,online information:Hepatocyte nuclear factors entry,similarity:Contains 1 fork-head DNA-binding domain.,subunit:Bounds TLE1.,</p>
<b>Subcellular Location :</b>	<p>Nucleus . Cytoplasm . Shuttles between the nucleus and cytoplasm in a CRM1-dependent manner; in response to insulin signaling via AKT1 is exported from the nucleus.</p>
<b>Expression :</b>	Liver,Lung,
<b>Sort :</b>	6218
<b>No4 :</b>	1

## Products Images



Western Blot analysis using FoxA2 Monoclonal Antibody against A549 (1) cell lysate.



Immunohistochemistry analysis of paraffin-embedded human colon cancer (A), gastric cancer (B) and rectal cancer (C) tissues with DAB staining using FoxA2 Monoclonal Antibody.

