

Fibulin-2 Monoclonal Antibody

Catalog No :	YM0271
Reactivity :	Human
Applications :	WB;ELISA
Target :	Fibulin-2
Gene Name :	FBLN2
Protein Name :	Fibulin-2
Human Gene Id :	2199
Human Swiss Prot No :	P98095
Mouse Swiss Prot No :	P37889
Immunogen :	Purified recombinant fragment of Fibulin-2 (aa180-440) expressed in E. Coli.
Specificity :	Fibulin-2 Monoclonal Antibody detects endogenous levels of Fibulin-2 protein.
Formulation :	Liquid in PBS containing 50% glycerol, 0.5% BSA and 0.02% sodium azide.
Source :	Monoclonal, Mouse
Dilution :	WB 1:500 - 1:2000. ELISA: 1:10000. Not yet tested in other applications.
Purification :	Affinity purification
Storage Stability :	-15 °C to -25 °C/1 year(Do not lower than -25 °C)
Molecularweight :	127kD
P References :	1. J Biol Chem. 1996 Aug 9;271(32):19489-96. 2. Eur J Hum Genet. 1996;4(5):292-5. 3. J Invest Dermatol. 1999 Jan;112(1):97-101. 4. Br J Dermatol. 2001 Aug;145(2):217-22.

Background :

This gene encodes an extracellular matrix protein, which belongs to the fibulin family. This protein binds various extracellular ligands and calcium. It may play a role during organ development, in particular, during the differentiation of heart, skeletal and neuronal structures. Alternatively spliced transcript variants encoding different isoforms have been identified. [provided by RefSeq, Jul 2008],

Function :

developmental stage:Widely expressed during embryonic development. Primarily detected within the neuropithelium, spinal ganglia and peripheral nerves.,function:Its binding to fibronectin and some other ligands is calcium dependent.,similarity:Belongs to the fibulin family.,similarity:Contains 11 EGF-like domains.,similarity:Contains 3 anaphylatoxin-like domains.,subunit:Homotrimer; disulfide-linked. Interacts with LAMA2.,tissue specificity:Component of both basement membranes and other connective tissues. Expressed in heart, placenta and ovary.,

Subcellular Location :

Secreted, extracellular space, extracellular matrix.

Expression :

Component of both basement membranes and other connective tissues. Expressed in heart, placenta and ovary.

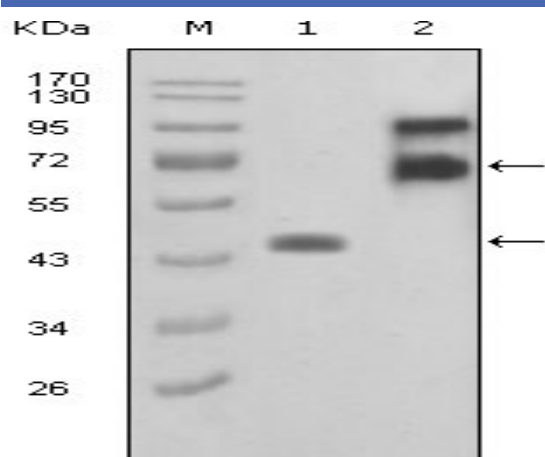
Sort :

6053

No4 :

1

Products Images



Western Blot analysis using Fibulin-2 Monoclonal Antibody against truncated FBLN2-Trx recombinant protein (1) and truncated FBLN2 (aa28-444)-hIgGFc transfected COS7 cell lysate(2).