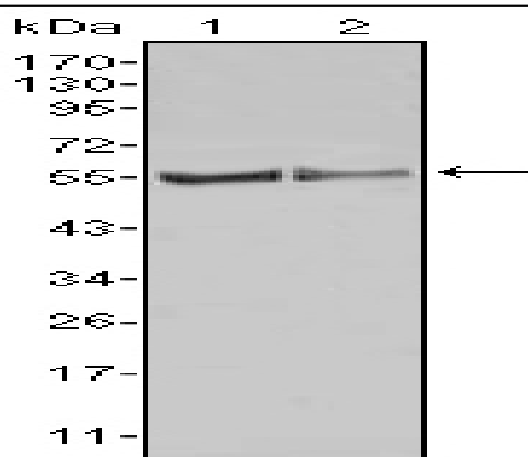


c-Fgr Monoclonal Antibody

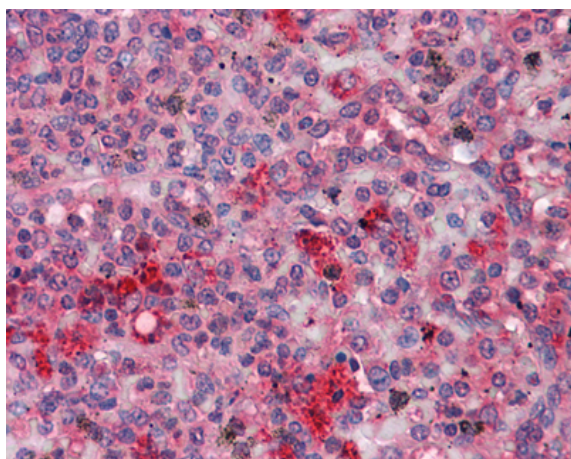
Catalog No :	YM0151
Reactivity :	Human;Mouse
Applications :	WB;IHC;IF;ELISA
Target :	c-Fgr
Fields :	>>Chemokine signaling pathway
Gene Name :	FGR
Protein Name :	Tyrosine-protein kinase Fgr
Human Gene Id :	2268
Human Swiss Prot No :	P09769
Mouse Gene Id :	14191
Mouse Swiss Prot No :	P14234
Immunogen :	Purified recombinant fragment of human c-Fgr expressed in E. Coli.
Specificity :	c-Fgr Monoclonal Antibody detects endogenous levels of c-Fgr protein.
Formulation :	Liquid in PBS containing 50% glycerol, 0.5% BSA and 0.02% sodium azide.
Source :	Monoclonal, Mouse
Dilution :	WB 1:500 - 1:2000. IHC 1:200 - 1:1000. ELISA: 1:10000.. IF 1:50-200
Purification :	Affinity purification
Storage Stability :	-15°C to -25°C/1 year(Do not lower than -25°C)
Molecularweight :	59kD

Cell Pathway :	Chemokine;
P References :	<ol style="list-style-type: none"> 1. Immunity. 2005 Feb;22(2):235-46. 2. Biochemistry. 2007 Oct 2;46(39):11023-32.
Background :	<p>This gene is a member of the Src family of protein tyrosine kinases (PTKs). The encoded protein contains N-terminal sites for myristylation and palmitoylation, a PTK domain, and SH2 and SH3 domains which are involved in mediating protein-protein interactions with phosphotyrosine-containing and proline-rich motifs, respectively. The protein localizes to plasma membrane ruffles, and functions as a negative regulator of cell migration and adhesion triggered by the beta-2 integrin signal transduction pathway. Infection with Epstein-Barr virus results in the overexpression of this gene. Multiple alternatively spliced variants, encoding the same protein, have been identified. [provided by RefSeq, Jul 2008],</p>
Function :	<p>catalytic activity:ATP + a [protein]-L-tyrosine = ADP + a [protein]-L-tyrosine phosphate.,similarity:Belongs to the protein kinase superfamily. Tyr protein kinase family. SRC subfamily.,similarity:Contains 1 protein kinase domain.,similarity:Contains 1 SH2 domain.,similarity:Contains 1 SH3 domain.,subunit:Binds PTPNS1.,</p>
Subcellular Location :	<p>Cell membrane ; Lipid-anchor ; Cytoplasmic side . Cell membrane; Peripheral membrane protein; Cytoplasmic side. Cell projection, ruffle membrane. Cytoplasm, cytosol. Cytoplasm, cytoskeleton. Mitochondrion inner membrane . Mitochondrion intermembrane space . Detected in mitochondrial intermembrane space and at inner membranes (By similarity). Colocalizes with actin fibers at membrane ruffles. Detected at plasma membrane lipid rafts. .</p>
Expression :	<p>Detected in neutrophils, monocytes and natural killer cells (at protein level). Detected in monocytes and large lymphocytes.</p>
Sort :	3881
No4 :	1

Products Images



Western Blot analysis using c-Fgr Monoclonal Antibody against HL60 (1) Raw264.7 (2) cell lysate.



Immunohistochemistry analysis of paraffin-embedded human Spleen tissues with AEC staining using c-Fgr Monoclonal Antibody.