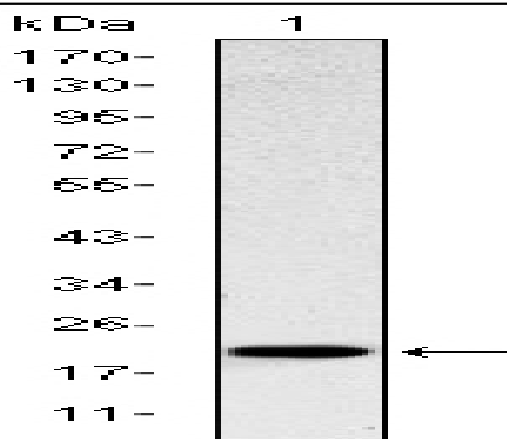


## CD94 Monoclonal Antibody

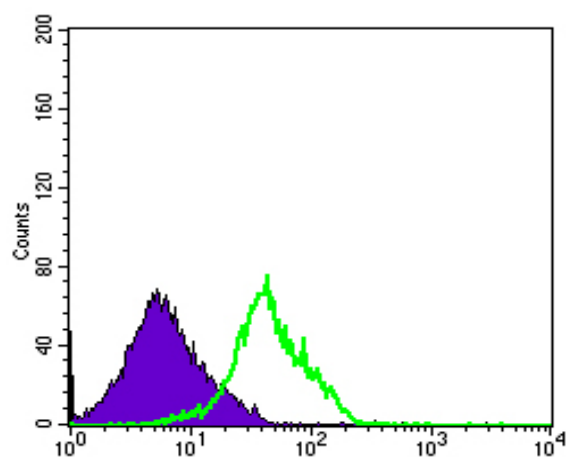
<b>Catalog No :</b>	YM0138
<b>Reactivity :</b>	Human
<b>Applications :</b>	WB;FCM;ELISA
<b>Target :</b>	CD94
<b>Fields :</b>	>>Antigen processing and presentation;>>Natural killer cell mediated cytotoxicity;>>Graft-versus-host disease
<b>Gene Name :</b>	KLRD1
<b>Protein Name :</b>	Natural killer cells antigen CD94
<b>Human Gene Id :</b>	3824
<b>Human Swiss Prot No :</b>	Q13241
<b>Mouse Swiss Prot No :</b>	O54707
<b>Immunogen :</b>	Purified recombinant fragment of human CD94 expressed in E. Coli.
<b>Specificity :</b>	CD94 Monoclonal Antibody detects endogenous levels of CD94 protein.
<b>Formulation :</b>	Liquid in PBS containing 50% glycerol, 0.5% BSA and 0.02% sodium azide.
<b>Source :</b>	Monoclonal, Mouse
<b>Dilution :</b>	WB 1:500 - 1:2000. Flow cytometry: 1:200 - 1:400. ELISA: 1:10000. Not yet tested in other applications.
<b>Purification :</b>	Affinity purification
<b>Storage Stability :</b>	-15°C to -25°C/1 year(Do not lower than -25°C)
<b>Molecularweight :</b>	21kD

<b>Cell Pathway :</b>	Antigen processing and presentation;Natural killer cell mediated cytotoxicity;Graft-versus-host disease;
<b>P References :</b>	<ol style="list-style-type: none"> <li>1. Leukemia. 2008 Sep;22(9):1778-81.</li> <li>2. Traffic. 2008 Jun;9(6):1019-34.</li> </ol>
<b>Background :</b>	<p>Natural killer (NK) cells are a distinct lineage of lymphocytes that mediate cytotoxic activity and secrete cytokines upon immune stimulation. Several genes of the C-type lectin superfamily, including members of the NKG2 family, are expressed by NK cells and may be involved in the regulation of NK cell function. KLRD1 (CD94) is an antigen preferentially expressed on NK cells and is classified as a type II membrane protein because it has an external C terminus. Three transcript variants encoding two different isoforms have been found for this gene. [provided by RefSeq, Jul 2008],</p>
<b>Function :</b>	<p>function:Plays a role as a receptor for the recognition of MHC class I HLA-E molecules by NK cells and some cytotoxic T-cells.,online information:CD94,similarity:Contains 1 C-type lectin domain.,subunit:Can form disulfide-bonded heterodimer with NKG2 family members.,tissue specificity:Natural killer cells.,</p>
<b>Subcellular Location :</b>	Cell membrane ; Single-pass type II membrane protein .
<b>Expression :</b>	<p>Expressed in NK cell subsets (at protein level) (PubMed:21825173, PubMed:9430220, PubMed:9485206). Expressed in memory/effector CD8-positive alpha-beta T cell subsets (at protein level) (PubMed:12387742, PubMed:20952657). Expressed in melanoma-specific cytotoxic T cell clones (at protein level) (PubMed:9485206). Expressed in terminally differentiated cytotoxic gamma-delta T cells (at protein level) (PubMed:20952657). KLRD1-KLRC1 and KLRD1-KLRC2 are differentially expressed in NK and T cell populations, with only minor subsets expressing both receptor complexes (at protein level) (PubMed:20952657).</p>
<b>Sort :</b>	3700
<b>No4 :</b>	1

## Products Images



Western Blot analysis using CD94 Monoclonal Antibody against recombinant protein.



Flow cytometric analysis of RAJI cells using CD94 Monoclonal Antibody (green) and negative control (purple).

