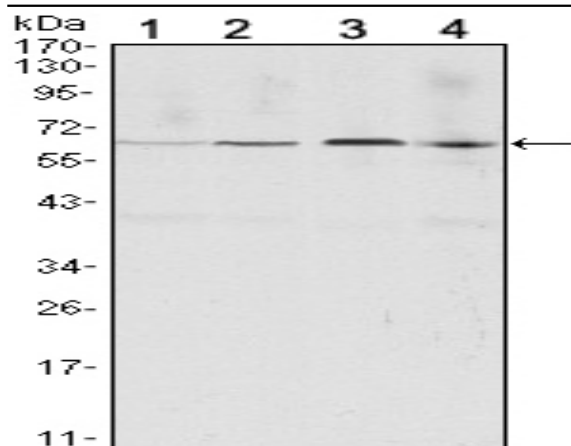


Cyclin B1 Monoclonal Antibody

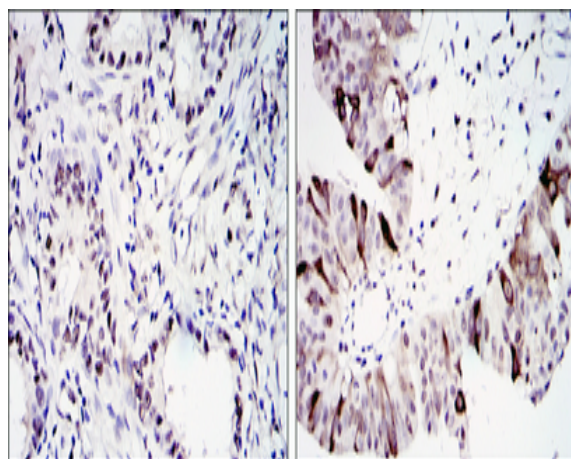
Catalog No :	YM0174
Reactivity :	Human
Applications :	WB;IHC;IF;ELISA
Target :	Cyclin B1
Fields :	>>FoxO signaling pathway;>>Cell cycle;>>Oocyte meiosis;>>p53 signaling pathway;>>Cellular senescence;>>Progesterone-mediated oocyte maturation;>>Human immunodeficiency virus 1 infection
Gene Name :	CCNB1
Protein Name :	G2/mitotic-specific cyclin-B1
Human Gene Id :	891
Human Swiss Prot No :	P14635
Mouse Swiss Prot No :	P24860
Immunogen :	Purified recombinant fragment of human Cyclin B1 expressed in E. Coli.
Specificity :	Cyclin B1 Monoclonal Antibody detects endogenous levels of Cyclin B1 protein.
Formulation :	Liquid in PBS containing 50% glycerol, 0.5% BSA and 0.02% sodium azide.
Source :	Monoclonal, Mouse
Dilution :	WB 1:500 - 1:2000. IHC 1:200 - 1:1000. ELISA: 1:10000.. IF 1:50-200
Purification :	Affinity purification
Storage Stability :	-15°C to -25°C/1 year(Do not lower than -25°C)
Molecularweight :	48kD

Cell Pathway :	AMPK
P References :	<ol style="list-style-type: none"> 1. Oncol Rep. 2009 Oct;22(4):745-55. 2. Cancer Biol Ther. 2009 Dec;8(24):2374-83. 3. Cytokine. 2010 Apr;50(1):42-9.
Background :	<p>The protein encoded by this gene is a regulatory protein involved in mitosis. The gene product complexes with p34(cdc2) to form the maturation-promoting factor (MPF). Two alternative transcripts have been found, a constitutively expressed transcript and a cell cycle-regulated transcript, that is expressed predominantly during G2/M phase. The different transcripts result from the use of alternate transcription initiation sites. [provided by RefSeq, Jul 2008],</p>
Function :	<p>developmental stage:Accumulates steadily during G2 and is abruptly destroyed at mitosis.,function:Essential for the control of the cell cycle at the G2/M (mitosis) transition.,PTM:Ubiquitinated by the SCF(NIPA) complex during interphase, leading to its destruction. Not ubiquitinated during G2/M phases.,similarity:Belongs to the cyclin family.,similarity:Belongs to the cyclin family. Cyclin AB subfamily.,subunit:Interacts with the CDC2 protein kinase to form a serine/threonine kinase holoenzyme complex also known as maturation promoting factor (MPF). The cyclin subunit imparts substrate specificity to the complex. Binds HEI10. Interacts with catalytically active RALBP1 and CDC2 during mitosis to form an endocytotic complex during interphase.,</p>
Subcellular Location :	Cytoplasm. Nucleus. Cytoplasm, cytoskeleton, microtubule organizing center, centrosome.
Expression :	Breast adenocarcinoma,Lung,Placenta,
Tag :	hot
Sort :	4706
No4 :	1
Host :	Mouse
Modifications :	Unmodified

Products Images



Western Blot analysis using Cyclin B1 Monoclonal Antibody against HeLa (1), Jurkat (2), K562 (3) and PC-12 (4) cell lysate.



Immunohistochemistry analysis of paraffin-embedded lung cancer (left) and ovary tumour tissues (right) with DAB staining using Cyclin B1 Monoclonal Antibody.