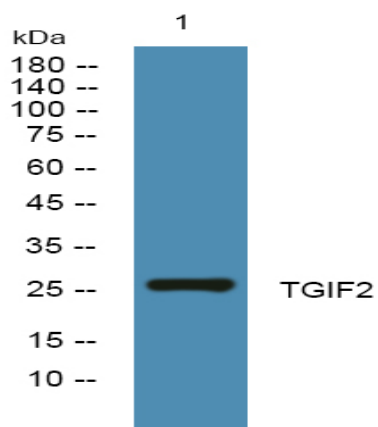


## TGIF2 Polyclonal Antibody

<b>Catalog No :</b>	YN0796
<b>Reactivity :</b>	Human;Mouse
<b>Applications :</b>	WB;ELISA
<b>Target :</b>	TGIF2
<b>Fields :</b>	>>TGF-beta signaling pathway
<b>Gene Name :</b>	TGIF2
<b>Protein Name :</b>	Homeobox protein TGIF2 (5'-TG-3'-interacting factor 2) (TGF-beta-induced transcription factor 2) (TGFB-induced factor 2)
<b>Human Gene Id :</b>	60436
<b>Human Swiss Prot No :</b>	Q9GZN2
<b>Mouse Swiss Prot No :</b>	Q8C0Y1
<b>Immunogen :</b>	Synthesized peptide derived from part region of human protein
<b>Specificity :</b>	TGIF2 Polyclonal Antibody detects endogenous levels of protein.
<b>Formulation :</b>	Liquid in PBS containing 50% glycerol, and 0.02% sodium azide.
<b>Source :</b>	Polyclonal, Rabbit,IgG
<b>Dilution :</b>	WB 1:500-2000 ELISA 1:5000-20000
<b>Purification :</b>	The antibody was affinity-purified from rabbit antiserum by affinity-chromatography using epitope-specific immunogen.
<b>Concentration :</b>	1 mg/ml
<b>Storage Stability :</b>	-15°C to -25°C/1 year(Do not lower than -25°C)

<b>Observed Band :</b>	26kD
<b>Background :</b>	<p>The protein encoded by this gene is a DNA-binding homeobox protein and a transcriptional repressor, which appears to repress transcription by recruiting histone deacetylases to TGF beta-responsive genes. This gene is amplified and over-expressed in some ovarian cancers. Alternative splicing results in multiple transcript variants. A related pseudogene has been identified on chromosome 1. Read-through transcription also exists between this gene and the neighboring downstream C20orf24 (chromosome 20 open reading frame 24) gene. [provided by RefSeq, Dec 2010],</p>
<b>Function :</b>	<p>function:Transcriptional repressor, which probably repress transcription by binding directly the 5'-CTGTCAA-3' DNA sequence or by interacting with TGF-beta activated SMAD proteins. Probably represses transcription via the recruitment of histone deacetylase proteins.,miscellaneous:TGIF2 is amplified and overexpressed in several ovarian cancer cell lines.,PTM:The C-terminal part is phosphorylated in response to EGF signaling by the Ras/MAPK pathway.,similarity:Belongs to the TALE/TGIF homeobox family.,similarity:Contains 1 homeobox DNA-binding domain.,subcellular location:Excluded from nucleoli.,subunit:Interacts with the transcriptional modulator SMAD3 and the histone deacetylase HDAC1.,tissue specificity:Widely expressed. Highly expressed in heart, kidney and testis. Weakly expressed in brain and prostate.,</p>
<b>Subcellular Location :</b>	Nucleus. Excluded from nucleoli.
<b>Expression :</b>	Widely expressed. Highly expressed in heart, kidney and testis. Weakly expressed in brain and prostate.
<b>Sort :</b>	22107
<b>No4 :</b>	1

## Products Images



Western blot analysis of lysates from SH-SY5Y cells, primary antibody was diluted at 1:1000, 4° over night