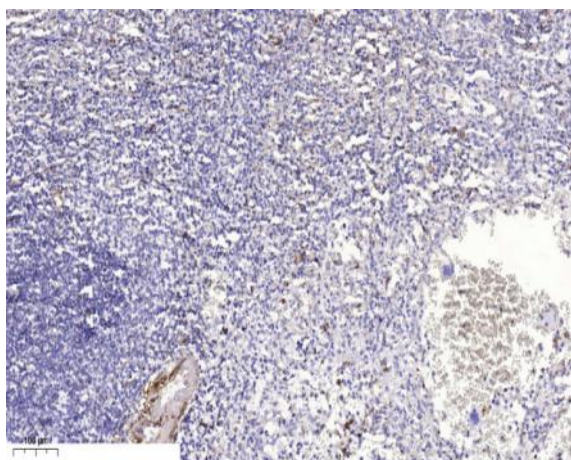


KLF13 (Acetyl Lys166) rabbit pAb

Catalog No :	YK0152
Reactivity :	Human;Mouse
Applications :	WB;IHC
Target :	KLF13
Gene Name :	KLF13 BTEB3 NSLP1
Protein Name :	KLF13 (Acetyl Lys166)
Human Gene Id :	51621
Human Swiss Prot No :	Q9Y2Y9
Mouse Gene Id :	50794
Mouse Swiss Prot No :	Q9JJZ6
Immunogen :	Synthesized peptide derived from human KLF13 (Acetyl Lys166)
Specificity :	This antibody detects endogenous levels of Human,Mouse KLF13 (Acetyl Lys166)
Formulation :	Liquid in PBS containing 50% glycerol, 0.5% BSA and 0.02% sodium azide.
Source :	Polyclonal, Rabbit,IgG
Dilution :	WB 1:500-2000;IHC 1:50-300
Purification :	The antibody was affinity-purified from rabbit serum by affinity-chromatography using specific immunogen.
Concentration :	1 mg/ml
Storage Stability :	-15°C to -25°C/1 year(Do not lower than -25°C)

Observed Band :	32kD
Background :	KLF13 belongs to a family of transcription factors that contain 3 classical zinc finger DNA-binding domains consisting of a zinc atom tetrahedrally coordinated by 2 cysteines and 2 histidines (C2H2 motif). These transcription factors bind to GC-rich sequences and related GT and CACCC boxes (Schoy et al., 2000 [PubMed 11087666]).[supplied by OMIM, Mar 2008],
Function :	domain:The Ala/Pro-rich domain may contain discrete activation and repression subdomains and also can mediate protein-protein interactions.,function:Represses transcription by binding to the BTE site, a GC-rich DNA element, in competition with the activator SP1. It also represses transcription by interacting with the corepressor Sin3A and HDAC1. Activates RANTES expression in T-cells.,PTM:Phosphorylated.,similarity:Belongs to the Sp1 C2H2-type zinc-finger protein family.,similarity:Contains 3 C2H2-type zinc fingers.,tissue specificity:Ubiquitous.,
Subcellular Location :	Nucleus.
Expression :	Ubiquitous.
Sort :	8947
Host :	Rabbit
Modifications :	Acetyl

Products Images



Immunohistochemical analysis of paraffin-embedded human spleen. 1, Antibody was diluted at 1:200(4° overnight). 2, Tris-EDTA,pH9.0 was used for antigen retrieval. 3,Secondary antibody was diluted at 1:200(room temperature, 45min).