

MKP-7 (Phospho Ser446) rabbit pAb

Catalog No :	YP1785
Reactivity :	Human;Mouse;Rat
Applications :	WB
Target :	MKP-7
Fields :	>>MAPK signaling pathway
Gene Name :	DUSP16 KIAA1700 MKP7
Protein Name :	MKP-7 (Phospho-Ser446)
Human Gene Id :	80824
Human Swiss Prot No :	Q9BY84
Immunogen :	Synthesized peptide derived from human MKP-7 (Phospho-Ser446)
Specificity :	This antibody detects endogenous levels of MKP-7 (Phospho-Ser446) at Human, Mouse,Rat
Formulation :	Liquid in PBS containing 50% glycerol, 0.5% BSA and 0.02% sodium azide.
Source :	Polyclonal, Rabbit,IgG
Dilution :	WB 1:500-2000
Purification :	The antibody was affinity-purified from rabbit serum by affinity-chromatography using specific immunogen.
Concentration :	1 mg/ml
Storage Stability :	-15°C to -25°C/1 year(Do not lower than -25°C)
Molecularweight :	73kD

Background : dual specificity phosphatase 16(DUSP16) Homo sapiens This gene encodes a mitogen-activated protein kinase phosphatase that is a member of the dual specificity protein phosphatase subfamily. These phosphatases inactivate their target kinases by dephosphorylating both the phosphoserine/threonine and phosphotyrosine residues. The encoded protein specifically regulates the c-Jun amino-terminal kinase (JNK) and extracellular signal-regulated kinase (ERK) pathways.[provided by RefSeq, May 2010],

Function : catalytic activity:A phosphoprotein + H(2)O = a protein + phosphate.,catalytic activity:Protein tyrosine phosphate + H(2)O = protein tyrosine + phosphate.,function:Involved in the inactivation of MAP kinases.,similarity:Belongs to the protein-tyrosine phosphatase family. Non-receptor class dual specificity subfamily.,similarity:Contains 1 rhodanese domain.,similarity:Contains 1 tyrosine-protein phosphatase domain.,

Subcellular Location : Cytoplasm. Nucleus. Cytoplasmic vesicle. After dissociation upon AGTR stimulation, re-associates with ARRB2 on endocytic vesicles.

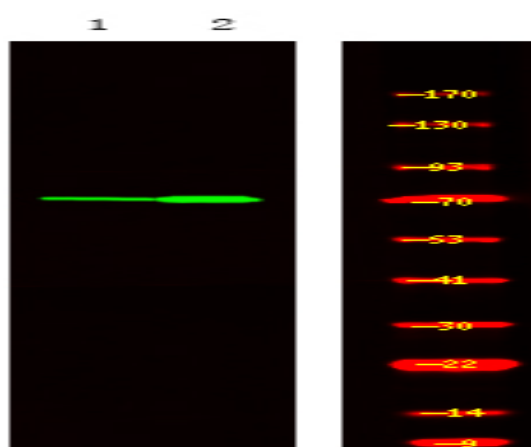
Expression : Bone marrow,Brain,Duodenum,PCR rescued clones,

Tag : orthogonal

Sort : 25264

No4 : 1

Products Images



Western Blot analysis of 1 HeLa cell, 2, LPS 100ng/mL 30min treated ,using primary antibody at 1:1000 dilution. Secondary antibody(catalog#:RS23920) was diluted at 1:10000