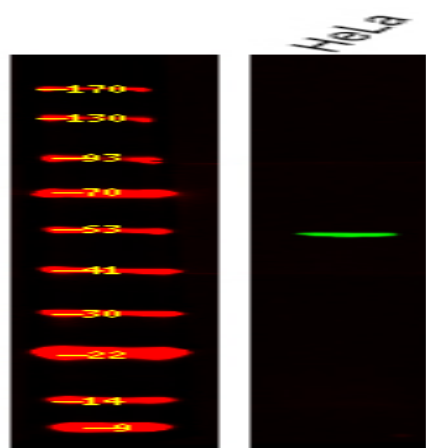


## EIF5 (Phospho Ser389+Ser390) rabbit pAb

<b>Catalog No :</b>	YP1773
<b>Reactivity :</b>	Human;Mouse;Rat
<b>Applications :</b>	WB
<b>Target :</b>	EIF5
<b>Gene Name :</b>	EIF5
<b>Protein Name :</b>	EIF5 (Phospho-Ser389+Ser390)
<b>Human Gene Id :</b>	1983
<b>Human Swiss Prot No :</b>	P55010
<b>Mouse Gene Id :</b>	100047658
<b>Mouse Swiss Prot No :</b>	P59325
<b>Rat Gene Id :</b>	56783
<b>Rat Swiss Prot No :</b>	Q07205
<b>Immunogen :</b>	Synthesized peptide derived from human EIF5 (Phospho-Ser389+Ser390)
<b>Specificity :</b>	This antibody detects endogenous levels of EIF5 (Phospho-Ser389+Ser390) at Human, Mouse,Rat
<b>Formulation :</b>	Liquid in PBS containing 50% glycerol, 0.5% BSA and 0.02% sodium azide.
<b>Source :</b>	Polyclonal, Rabbit,IgG
<b>Dilution :</b>	WB 1:500-2000
<b>Purification :</b>	The antibody was affinity-purified from rabbit serum by affinity-chromatography using specific immunogen.

<b>Concentration :</b>	1 mg/ml
<b>Storage Stability :</b>	-15°C to -25°C/1 year(Do not lower than -25°C)
<b>Observed Band :</b>	50kD
<b>Background :</b>	Eukaryotic translation initiation factor-5 (EIF5) interacts with the 40S initiation complex to promote hydrolysis of bound GTP with concomitant joining of the 60S ribosomal subunit to the 40S initiation complex. The resulting functional 80S ribosomal initiation complex is then active in peptidyl transfer and chain elongations (summary by Si et al., 1996 [PubMed 8663286]).[supplied by OMIM, May 2010],
<b>Function :</b>	function:Catalyzes the hydrolysis of GTP bound to the 40S ribosomal initiation complex (40S.mRNA.Met-tRNA[F].eIF-2.GTP) with the subsequent joining of a 60S ribosomal subunit resulting in the release of eIF-2 and the guanine nucleotide. The subsequent joining of a 60S ribosomal subunit results in the formation of a functional 80S initiation complex (80S.mRNA.Met-tRNA[F]).,similarity:Belongs to the eIF-2-beta/eIF-5 family.,similarity:Contains 1 W2 domain.,
<b>Subcellular Location :</b>	nucleus,cytoplasm,cytosol,plasma membrane,cell-cell adherens junction,
<b>Expression :</b>	Brain,Epithelium,Lymph,Pooled,Uterus,
<b>Sort :</b>	25252
<b>No4 :</b>	1

## Products Images



Western Blot analysis of various,using primary antibody at 1:1000 dilution. Secondary antibody(catalog#:RS23920) was diluted at 1:10000