

EPHA1 (Phospho Tyr781) Rabbit pAb

Catalog No :	YP1835
Reactivity :	Human;Mouse
Applications :	IHC;WB
Target :	EPHA1
Fields :	>>Axon guidance
Gene Name :	EPHA1 EPH EPHT EPHT1
Protein Name :	Ephrin type-A receptor 1 (hEpha1) (EC 2.7.10.1) (EPH tyrosine kinase) (EPH tyrosine kinase 1) (Erythropoietin-producing hepatoma receptor) (Tyrosine-protein kinase receptor EPH)
Sequence :	P21709
Human Gene Id :	2041
Human Swiss Prot No :	P21709
Mouse Gene Id :	13835
Mouse Swiss Prot No :	Q60750
Immunogen :	Synthesized peptide derived from human EPHA1 (Phospho Tyr781)
Specificity :	This antibody detects endogenous levels of EPHA1 (Phospho Tyr781) Rabbit pAb at Human, Mouse
Formulation :	Liquid in PBS containing 50% glycerol, and 0.02% sodium azide.
Source :	Rabbit,polyclonal
Dilution :	WB 1:500-2000 IHC 1:50-200
Purification :	The antibody was affinity-purified from rabbit serum by affinity-chromatography

using specific immunogen.

Concentration : 1 mg/ml

Storage Stability : -15°C to -25°C/1 year (Do not lower than -25°C)

Observed Band : 69kD

Background : EPH receptor A1 (EPHA1) Homo sapiens This gene belongs to the ephrin receptor subfamily of the protein-tyrosine kinase family. EPH and EPH-related receptors have been implicated in mediating developmental events, particularly in the nervous system. Receptors in the EPH subfamily typically have a single kinase domain and an extracellular region containing a Cys-rich domain and 2 fibronectin type III repeats. The ephrin receptors are divided into 2 groups based on the similarity of their extracellular domain sequences and their affinities for binding ephrin-A and ephrin-B ligands. This gene is expressed in some human cancer cell lines and has been implicated in carcinogenesis. [provided by RefSeq, Jul 2008],

Function : catalytic activity: ATP + a [protein]-L-tyrosine = ADP + a [protein]-L-tyrosine phosphate., function: Receptor for members of the ephrin-A family. Binds with a low affinity to ephrin-A1., similarity: Belongs to the protein kinase superfamily. Tyr protein kinase family., similarity: Belongs to the protein kinase superfamily. Tyr protein kinase family. Ephrin receptor subfamily., similarity: Contains 1 protein kinase domain., similarity: Contains 1 SAM (sterile alpha motif) domain., similarity: Contains 2 fibronectin type-III domains., tissue specificity: Overexpressed in several carcinomas.,

Subcellular Location : Cell membrane ; Single-pass type I membrane protein .

Expression : Overexpressed in several carcinomas.

Tag : orthogonal

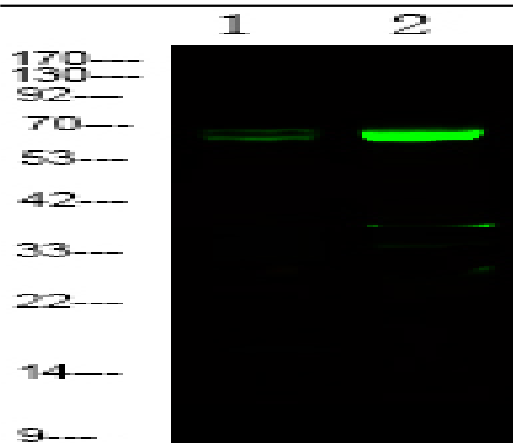
Sort : 999

No4 : 1

Host : Rabbit

Modifications : Phospho

Products Images



Western Blot analysis of 1 Jurkat cell 2 Serum-free treated ,using primary antibody at 1:1000 dilution. Secondary antibody(catalog#:RS23920) was diluted at 1:10000