

BCLAF1 (Phospho Ser531) rabbit pAb

Catalog No :	YP1781
Reactivity :	Human;Mouse;Rat
Applications :	WB
Target :	BCLAF1
Gene Name :	BCLAF1 BTF KIAA0164
Protein Name :	BCLAF1 (Phospho-Ser531)
Human Gene Id :	9774
Human Swiss Prot No :	Q9NYF8
Mouse Gene Id :	72567
Mouse Swiss Prot No :	Q8K019
Immunogen :	Synthesized peptide derived from human BCLAF1 (Phospho-Ser531)
Specificity :	This antibody detects endogenous levels of BCLAF1 (Phospho-Ser531) at Human, Mouse,Rat
Formulation :	Liquid in PBS containing 50% glycerol, 0.5% BSA and 0.02% sodium azide.
Source :	Polyclonal, Rabbit,IgG
Dilution :	WB 1:500-2000
Purification :	The antibody was affinity-purified from rabbit serum by affinity-chromatography using specific immunogen.
Concentration :	1 mg/ml
Storage Stability :	-15 °C to -25 °C/1 year(Do not lower than -25 °C)

Molecularweight : 101kD

Background : This gene encodes a transcriptional repressor that interacts with several members of the BCL2 family of proteins. Overexpression of this protein induces apoptosis, which can be suppressed by co-expression of BCL2 proteins. The protein localizes to dot-like structures throughout the nucleus, and redistributes to a zone near the nuclear envelope in cells undergoing apoptosis. Multiple transcript variants encoding different isoforms have been found for this gene. [provided by RefSeq, Jul 2008],

Function : function:Death-promoting transcriptional repressor.,sequence caution:Contaminating sequence. Potential poly-A sequence.,subunit:Interacts with Bcl-2 related proteins, EMD, with the adenovirus E1B 19 kDa protein and with DNA.,tissue specificity:Ubiquitous.,

Subcellular Location : Cytoplasm. Nucleus. Nucleus speckle . Nucleus, nucleoplasm .

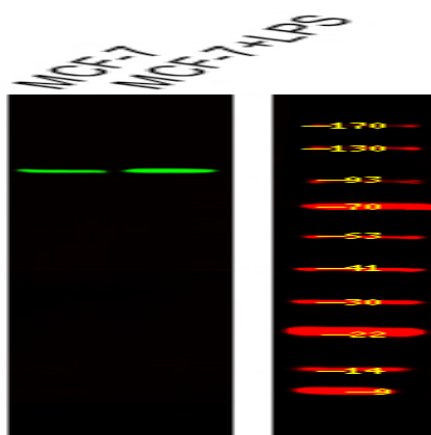
Expression : Ubiquitous.

Sort : 25260

Host : Rabbit

Modifications : Phospho

Products Images



Western Blot analysis of various,using primary antibody at 1:1000 dilution. Secondary antibody(catalog#:RS23920) was diluted at 1:10000