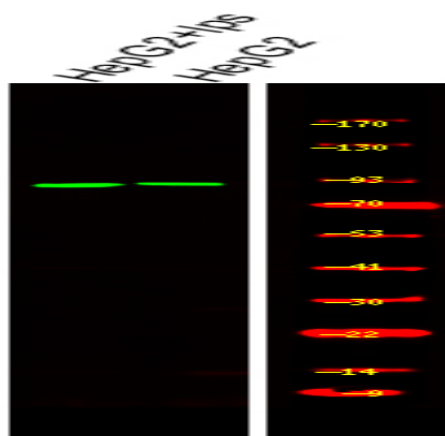


RSK2 (Phospho Tyr529) rabbit pAb

Catalog No :	YP1775
Reactivity :	Human;Mouse;Rat
Applications :	WB
Target :	RSK2
Fields :	>>MAPK signaling pathway;>>Oocyte meiosis;>>mTOR signaling pathway;>>Thermogenesis;>>Long-term potentiation;>>Neurotrophin signaling pathway;>>Progesterone-mediated oocyte maturation;>>Insulin resistance;>>Yersinia infection;>>Chemical carcinogenesis - receptor activation
Gene Name :	RPS6KA3 ISPK1 MAPKAPK1B RSK2
Protein Name :	RSK2 (Phospho-Tyr529)
Human Gene Id :	6197
Human Swiss Prot No :	P51812
Mouse Gene Id :	110651
Mouse Swiss Prot No :	P18654
Immunogen :	Synthesized peptide derived from human RSK2 (Phospho-Tyr529)
Specificity :	This antibody detects endogenous levels of RSK2 (Phospho-Tyr529) at Human, Mouse,Rat
Formulation :	Liquid in PBS containing 50% glycerol, 0.5% BSA and 0.02% sodium azide.
Source :	Polyclonal, Rabbit,IgG
Dilution :	WB 1:500-2000
Purification :	The antibody was affinity-purified from rabbit serum by affinity-chromatography using specific immunogen.

Concentration :	1 mg/ml
Storage Stability :	-15°C to -25°C/1 year(Do not lower than -25°C)
Molecularweight :	81kD
Background :	<p>ribosomal protein S6 kinase A3(RPS6KA3) Homo sapiens This gene encodes a member of the RSK (ribosomal S6 kinase) family of serine/threonine kinases. This kinase contains 2 non-identical kinase catalytic domains and phosphorylates various substrates, including members of the mitogen-activated kinase (MAPK) signalling pathway. The activity of this protein has been implicated in controlling cell growth and differentiation. Mutations in this gene have been associated with Coffin-Lowry syndrome (CLS). [provided by RefSeq, Jul 2008],</p>
Function :	<p>catalytic activity:ATP + a protein = ADP + a phosphoprotein.,cofactor:Magnesium.,disease:Defects in RPS6KA3 are the cause of Coffin-Lowry syndrome (CLS) [MIM:303600]; an X-linked dominant disorder characterized by severe mental retardation with facial and digital dysmorphisms, and progressive skeletal deformations.,enzyme regulation:Activated by multiple phosphorylations on threonine and serine residues.,function:Serine/threonine kinase that may play a role in mediating the growth-factor and stress induced activation of the transcription factor CREB.,PTM:Autophosphorylated on Ser-386, as part of the activation process.,PTM:Ser-227 phosphorylation promotes Ser-386 phosphorylation and leads to basal activation. Full activation by growth factors requires additional phosphorylation on Ser-369.,similarity:Belongs to the protein kinase superfamily. AGC Ser/Thr protein kinase family. S6 kinase</p>
Subcellular Location :	Nucleus . Cytoplasm .
Expression :	Expressed in many tissues, highest levels in skeletal muscle.
Sort :	25254
Host :	Rabbit
Modifications :	Phospho

Products Images



Western Blot analysis of various, using primary antibody at 1:1000 dilution. Secondary antibody (catalog#:RS23920) was diluted at 1:10000