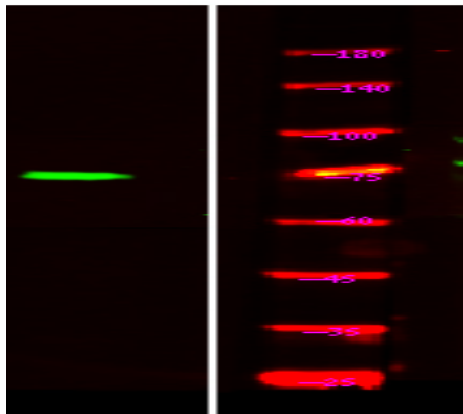


## TORC1/CRTC1 (Phospho Ser151) rabbit pAb

<b>Catalog No :</b>	YP1534
<b>Reactivity :</b>	Human;Rat;Mouse;
<b>Applications :</b>	WB
<b>Target :</b>	TORC1
<b>Fields :</b>	>>Human T-cell leukemia virus 1 infection
<b>Gene Name :</b>	CRTC1 KIAA0616 MECT1 TORC1 WAMTP1
<b>Protein Name :</b>	TORC1/CRTC1 (Ser151)
<b>Human Gene Id :</b>	23373
<b>Human Swiss Prot No :</b>	Q6UUV9
<b>Mouse Gene Id :</b>	382056
<b>Mouse Swiss Prot No :</b>	Q68ED7
<b>Rat Gene Id :</b>	684527
<b>Rat Swiss Prot No :</b>	Q157S1
<b>Immunogen :</b>	Synthesized phosho peptide around human TORC1 and CRTC1 (Ser151)
<b>Specificity :</b>	This antibody detects endogenous levels of Human TORC1 or CRTC1 (phospho-Ser151)
<b>Formulation :</b>	Liquid in PBS containing 50% glycerol, 0.5% BSA and 0.02% sodium azide.
<b>Source :</b>	Polyclonal, Rabbit,IgG
<b>Dilution :</b>	WB 1:1000-2000

<b>Purification :</b>	The antibody was affinity-purified from rabbit serum by affinity-chromatography using specific immunogen.
<b>Concentration :</b>	1 mg/ml
<b>Storage Stability :</b>	-15°C to -25°C/1 year(Do not lower than -25°C)
<b>Observed Band :</b>	70kD
<b>Function :</b>	<p>disease:A chromosomal aberration involving CRTC1 is found in mucoepidermoid carcinomas, benign Warthin tumors and clear cell hidradenomas. Translocation t(11;19)(q21;p13) with MAML2. The fusion protein consists of the N-terminus of CRTC1 joined to the C-terminus of MAML2. The reciprocal fusion protein consisting of the N-terminus of MAML2 joined to the C-terminus of CRTC1 has been detected in a small number of mucoepidermoid carcinomas.,function:Transcriptional coactivator for CREB1 which activates transcription through both consensus and variant cAMP response element (CRE) sites. Acts as a coactivator, in the SIK/TORC signaling pathway, being active when dephosphorylated and acts independently of CREB1 'Ser-133' phosphorylation. Enhances the interaction of CREB1 with TAF4. Regulates the expression of specific CREB-activated genes such as the steroidogenic gene, StAR. Potent coactivator</p>
<b>Subcellular Location :</b>	Cytoplasm . Nucleus . Cytoplasmic when phosphorylated by SIK or AMPK and when sequestered by 14-3-3 proteins (PubMed:16817901). Translocated to the nucleus on Ser-151 dephosphorylation, instigated by a number of factors including calcium ion and cAMP levels (PubMed:15589160). Light stimulation triggers a nuclear accumulation in the suprachiasmatic nucleus (SCN) of the brain (By similarity). .
<b>Expression :</b>	Highly expressed in adult and fetal brain. Located to specific regions such as the prefrontal cortex and cerebellum. Very low expression in other tissues such as heart, spleen, lung, skeletal muscle, salivary gland, ovary and kidney.
<b>Tag :</b>	orthogonal
<b>Sort :</b>	17298
<b>No4 :</b>	1

## Products Images



Western Blot analysis of Hela treated or untreated by LPS lysis, using primary antibody at 1:1000 dilution. Secondary antibody(catalog#:RS23920) was diluted at 1:10000