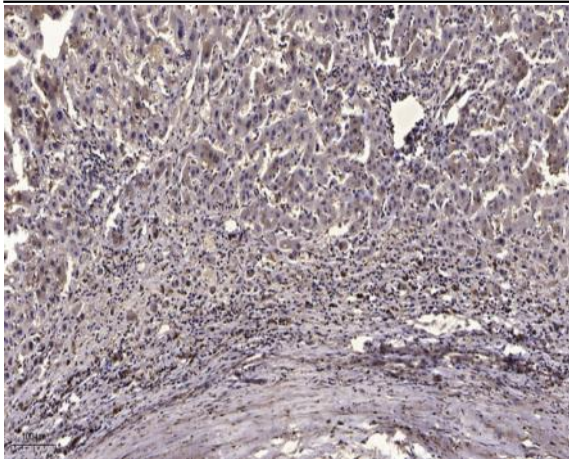


## PDK1 (Phospho Thr338) rabbit pAb

<b>Catalog No :</b>	YP1634
<b>Reactivity :</b>	Human;Mouse;Rat
<b>Applications :</b>	WB;ELISA;IHC
<b>Target :</b>	PDK1
<b>Fields :</b>	>>HIF-1 signaling pathway;>>Central carbon metabolism in cancer
<b>Gene Name :</b>	PDK1 PDHK1
<b>Protein Name :</b>	PDHK1 (Phospho Thr338)
<b>Human Gene Id :</b>	5163
<b>Human Swiss Prot No :</b>	Q15118
<b>Mouse Gene Id :</b>	228026
<b>Mouse Swiss Prot No :</b>	Q8BFP9
<b>Rat Swiss Prot No :</b>	Q63065
<b>Immunogen :</b>	Synthesized peptide derived from human PDHK1 (Phospho Thr338)
<b>Specificity :</b>	This antibody detects endogenous levels of Human,Mouse,Rat PDHK1 (Phospho Thr338)
<b>Formulation :</b>	Liquid in PBS containing 50% glycerol, 0.5% BSA and 0.02% sodium azide.
<b>Source :</b>	Polyclonal, Rabbit,IgG
<b>Dilution :</b>	WB 1:500-2000;IHC 1:50-300; ELISA 2000-20000
<b>Purification :</b>	The antibody was affinity-purified from rabbit serum by affinity-chromatography using specific immunogen.

<b>Concentration :</b>	1 mg/ml
<b>Storage Stability :</b>	-15°C to -25°C/1 year(Do not lower than -25°C)
<b>Observed Band :</b>	50kD
<b>Background :</b>	<p>Pyruvate dehydrogenase (PDH) is a mitochondrial multienzyme complex that catalyzes the oxidative decarboxylation of pyruvate and is one of the major enzymes responsible for the regulation of homeostasis of carbohydrate fuels in mammals. The enzymatic activity is regulated by a phosphorylation/dephosphorylation cycle. Phosphorylation of PDH by a specific pyruvate dehydrogenase kinase (PDK) results in inactivation. Multiple alternatively spliced transcript variants have been found for this gene. [provided by RefSeq, Jun 2013],</p>
<b>Function :</b>	<p>catalytic activity:ATP + [pyruvate dehydrogenase (acetyl-transferring)] = ADP + [pyruvate dehydrogenase (acetyl-transferring)] phosphate.,function:Inhibits the mitochondrial pyruvate dehydrogenase complex by phosphorylation of the E1 alpha subunit, thus contributing to the regulation of glucose metabolism.,similarity:Belongs to the PDK/BCKDK protein kinase family.,similarity:Contains 1 histidine kinase domain.,tissue specificity:Expressed predominantly in the heart.,</p>
<b>Subcellular Location :</b>	Mitochondrion matrix .
<b>Expression :</b>	Expressed predominantly in the heart. Detected at lower levels in liver, skeletal muscle and pancreas.
<b>Sort :</b>	11776
<b>No4 :</b>	1
<b>Host :</b>	Rabbit
<b>Modifications :</b>	Phospho

## Products Images



Immunohistochemical analysis of paraffin-embedded human liver cancer. 1, Antibody was diluted at 1:200(4° overnight). 2, Tris-EDTA,pH9.0 was used for antigen retrieval. 3,Secondary antibody was diluted at 1:200(room temperature, 45min).